

115°25'W

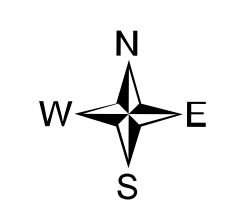
115°20'W



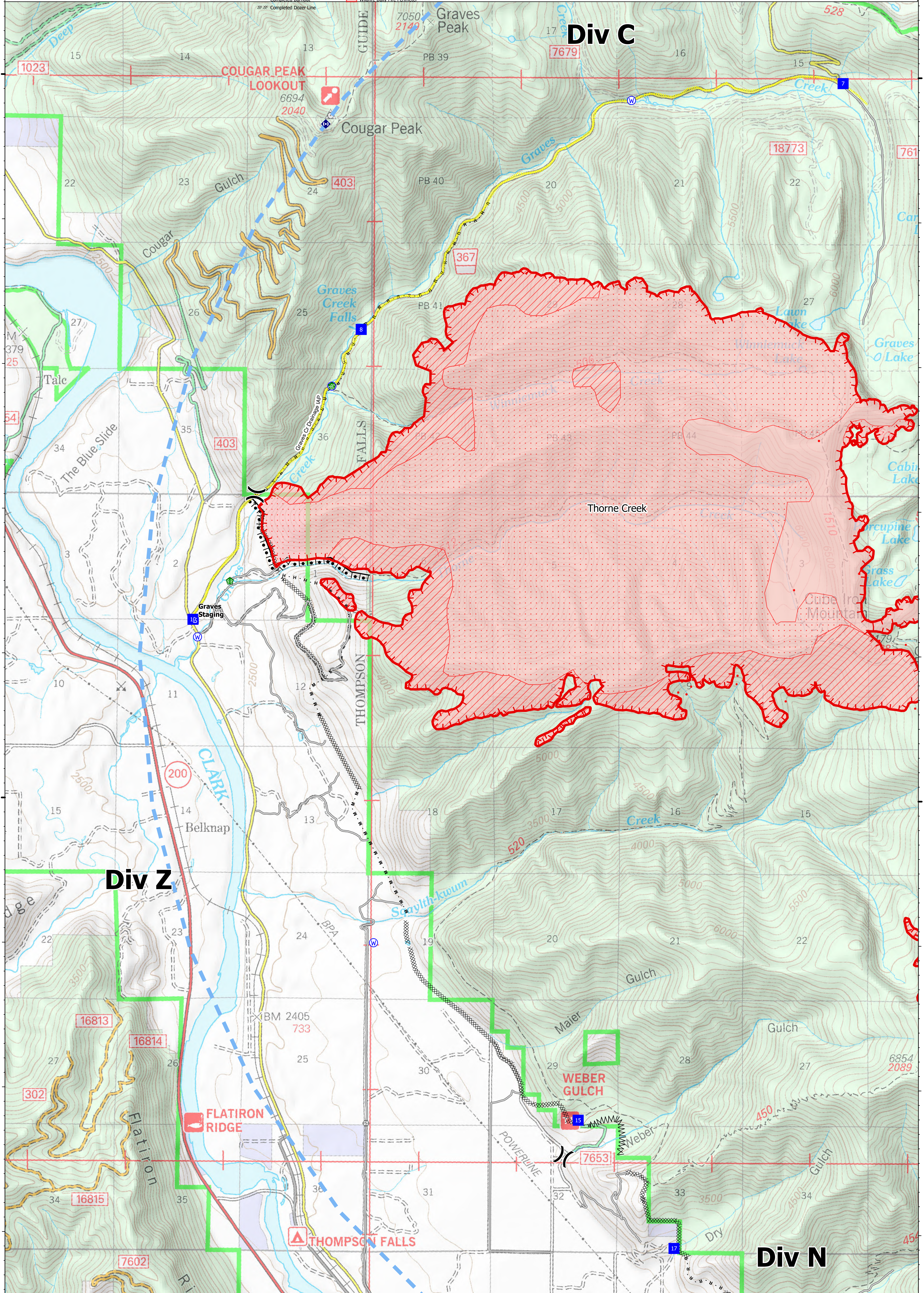
**Ops Map**  
 West Lolo Complex - Div Z  
 MT-LNF-000893  
 7/27/21 Day  
 8,490 acres at 7/26/21 @ 2245

- Unimproved Landing Area
- ⌘ Division Break
- Drop Point
- Staging Area
- Gate
- Water Development or Draft Site
- Stream Crossing
- Repair Point
- Repeater
- Water Source
- IR Isolated Heat Source
- Completed Burnout
- Completed Dozer Line
- M Completed Fuel Break
- H Completed Hand Line
- M Completed Mixed Construction Line
- R Completed Road as Line
- Access or Improved Road
- Incident Action Point
- Temporary Flight Restriction
- Fire Edge
- IR Heat Perimeter
- IR Intense Heat
- IR Scattered Heat
- Wildlife Daily Fire Perimeter

Type	Label	Latitude	Longitude
Water Source	47° 41.117' N 115° 24.288' W	47° 41.117' N 115° 24.288' W	
Water Development or Draft Site	47° 42.859' N 115° 22.925' W	47° 42.859' N 115° 22.925' W	
Water Source	47° 44.839' N 115° 19.867' W	47° 44.839' N 115° 19.867' W	
Water Source	47° 42.855' N 115° 22.925' W	47° 42.855' N 115° 22.925' W	
Water Source	47° 39.009' N 115° 22.471' W	47° 39.009' N 115° 22.471' W	
Drop Point	10 47° 41.239' N 115° 24.335' W	47° 41.239' N 115° 24.335' W	
Drop Point	15 47° 37.789' N 115° 20.369' W	47° 37.789' N 115° 20.369' W	
Drop Point	17 47° 36.905' N 115° 19.383' W	47° 36.905' N 115° 19.383' W	
Drop Point	6 47° 46.028' N 115° 19.064' W	47° 46.028' N 115° 19.064' W	
Drop Point	7 47° 44.961' N 115° 17.699' W	47° 44.961' N 115° 17.699' W	
Drop Point	8 47° 43.248' N 115° 22.627' W	47° 43.248' N 115° 22.627' W	
Unimproved Landing Area	U-3 47° 46.029' N 115° 19.064' W	47° 46.029' N 115° 19.064' W	



0 0.5 1 Miles  
 mmurphy  
 7/27/2021 0527  
 North American 1983 Datum, Lat,Long Grid



115°25'W

115°20'W