

115°25'W

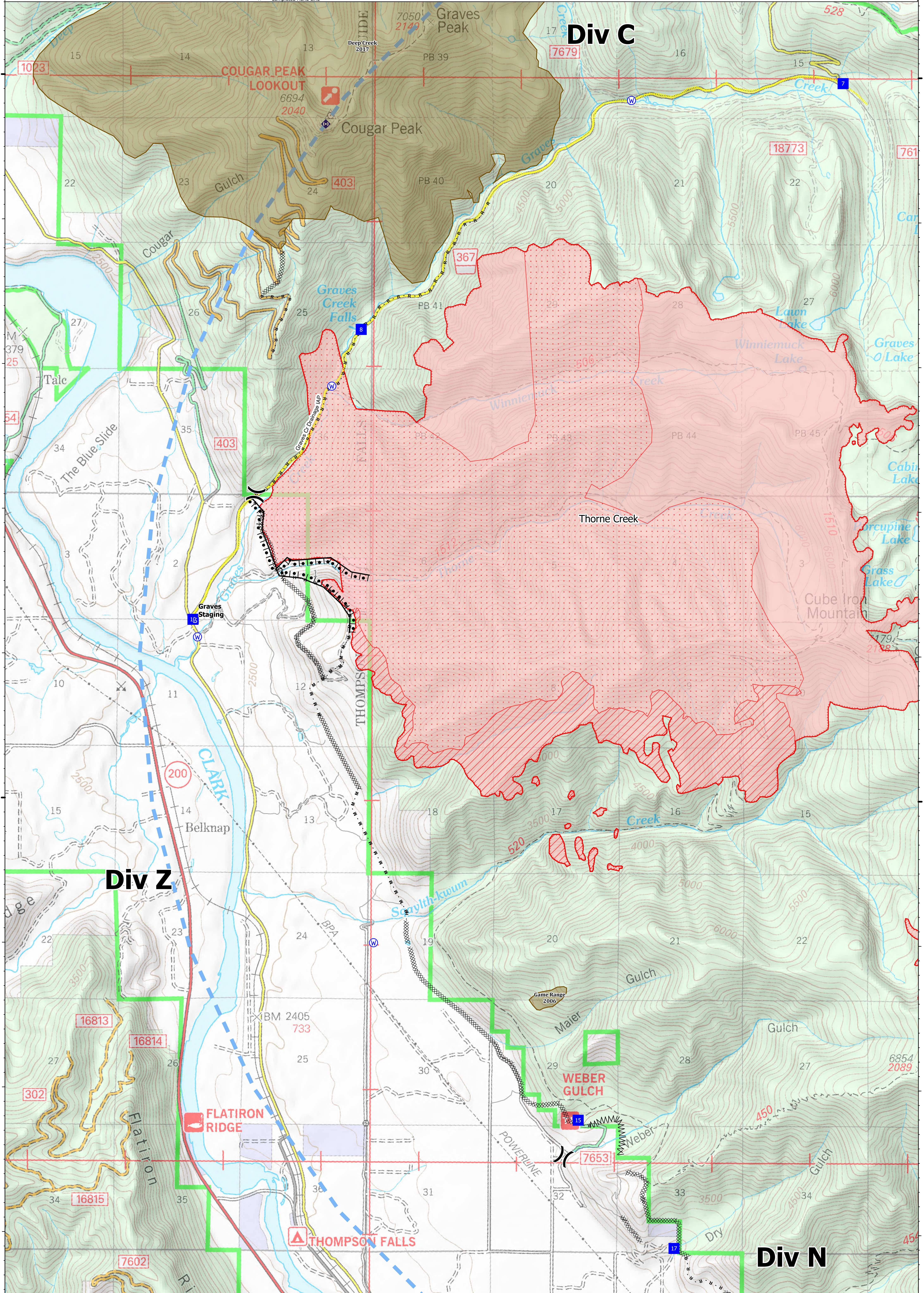
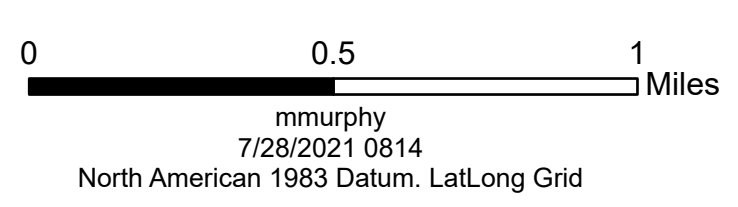
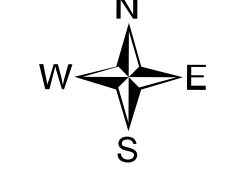
115°20'W



Ops Map
 West Lolo Complex - Div Z
 MT-LNF-000893
 7/28/21 Day
 10,357 acres at 7/27/21 @ 2300

- Unimproved Landing Area
- ⌋ Division Break
- Drop Point
- Staging Area
- ⊙ Gate
- Ⓜ Repeater
- Ⓜ Water Source
- Ⓜ Completed Burnout
- Ⓜ Completed Dozer Line
- Ⓜ Completed Fuel Break
- Ⓜ Completed Hand Line
- M - Completed Mixed Construction Line
- R - Completed Road as Line
- Access or Improved Road
- Ⓜ Incident Action Point
- Temporary Flight Restriction
- Fire Edge
- IR Intense Heat
- IR Scattered Heat
- Wildfire Daily Fire Perimeter
- InteragencyFireHistory_MT

Type	Label	Latitude	Longitude
Water Source		47° 41.117' N 115° 24.288' W	
Water Development or Draft Site		47° 42.859' N 115° 22.925' W	
Water Source		47° 44.839' N 115° 19.867' W	
Water Source		47° 42.855' N 115° 22.925' W	
Water Source		47° 39.009' N 115° 22.471' W	
Drop Point	10	47° 41.239' N 115° 24.335' W	
Drop Point	15	47° 37.789' N 115° 20.369' W	
Drop Point	17	47° 36.905' N 115° 19.383' W	
Drop Point	6	47° 46.028' N 115° 19.064' W	
Drop Point	7	47° 44.961' N 115° 17.699' W	
Drop Point	8	47° 43.248' N 115° 22.627' W	
Drop Point	U-3	47° 46.029' N 115° 19.064' W	



115°25'W

115°20'W