


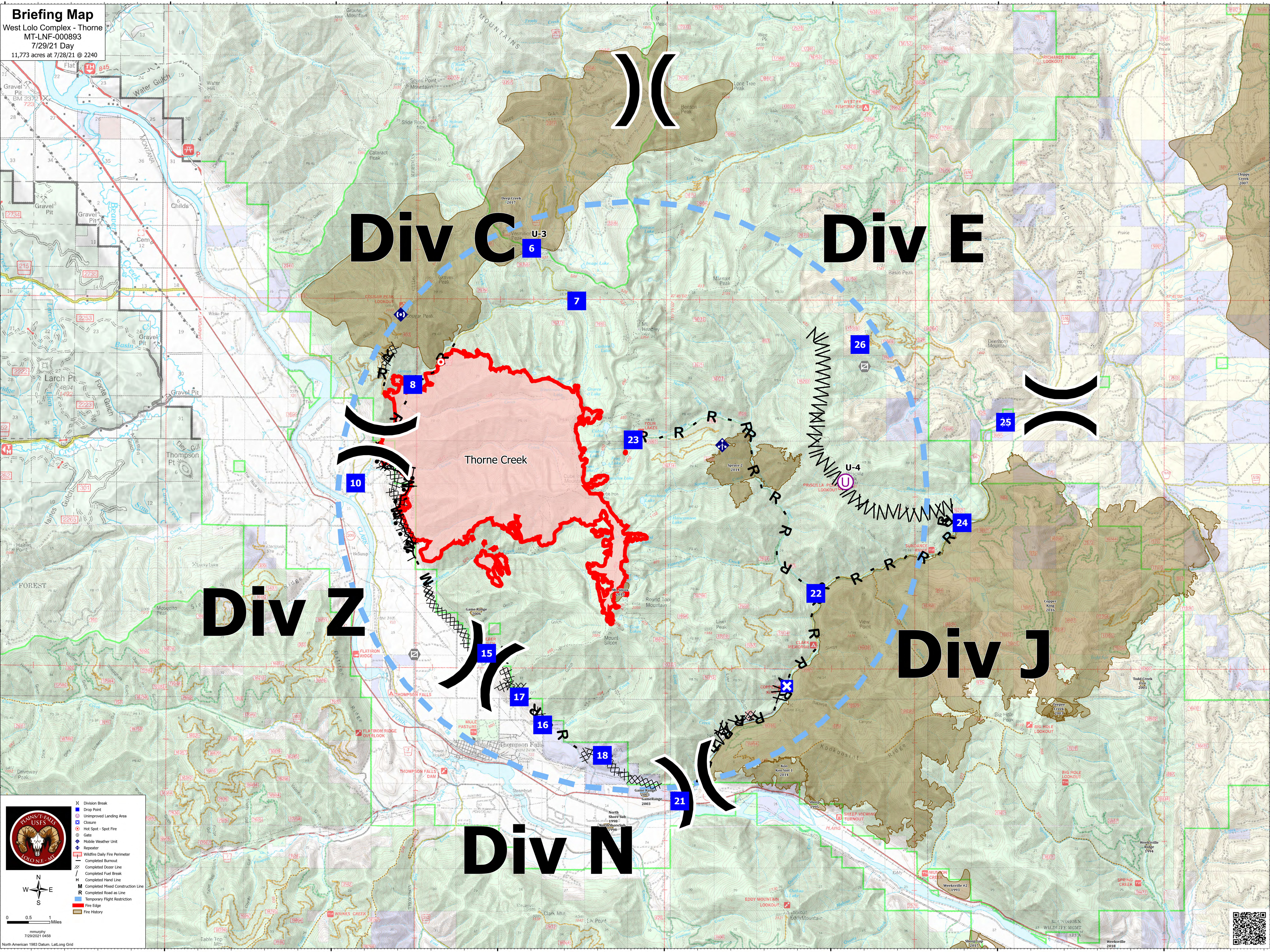
Briefing Map
 West Lolo Complex - Thorne
 MT-LNF-000893
 7/29/21 Day
 11,773 acres as 7/28/21 @ 2240



Thompson Falls USFS

- X Division Break
- Drop Point
- Unimproved Landing Area
- Closure
- Hot Spot - Spot Fire
- Gate
- ◆ Mobile Weather Unit
- ◆ Repeater
- ▬ Wildfire Daily Fire Perimeter
- ▬ Completed Burned
- ▬ Completed Doser Line
- ▬ Completed Fuel Break
- ▬ Completed Hand Line
- ▬ Completed Mixed Construction Line
- ▬ Completed Road as Line
- ▬ Temporary Flight Restriction
- ▬ Fire Edge
- ▬ Fire History

0 0.5 1 Miles
 mmurphy
 7/29/2021 10:45h
 North American 1983 Datum, Lat-Long Grid



Div C

Div E

Div Z

Div J

Div N

Thorne Creek

U-3

U-4

6

7

10

15

16

17

18

21

23

22

24

26

25