

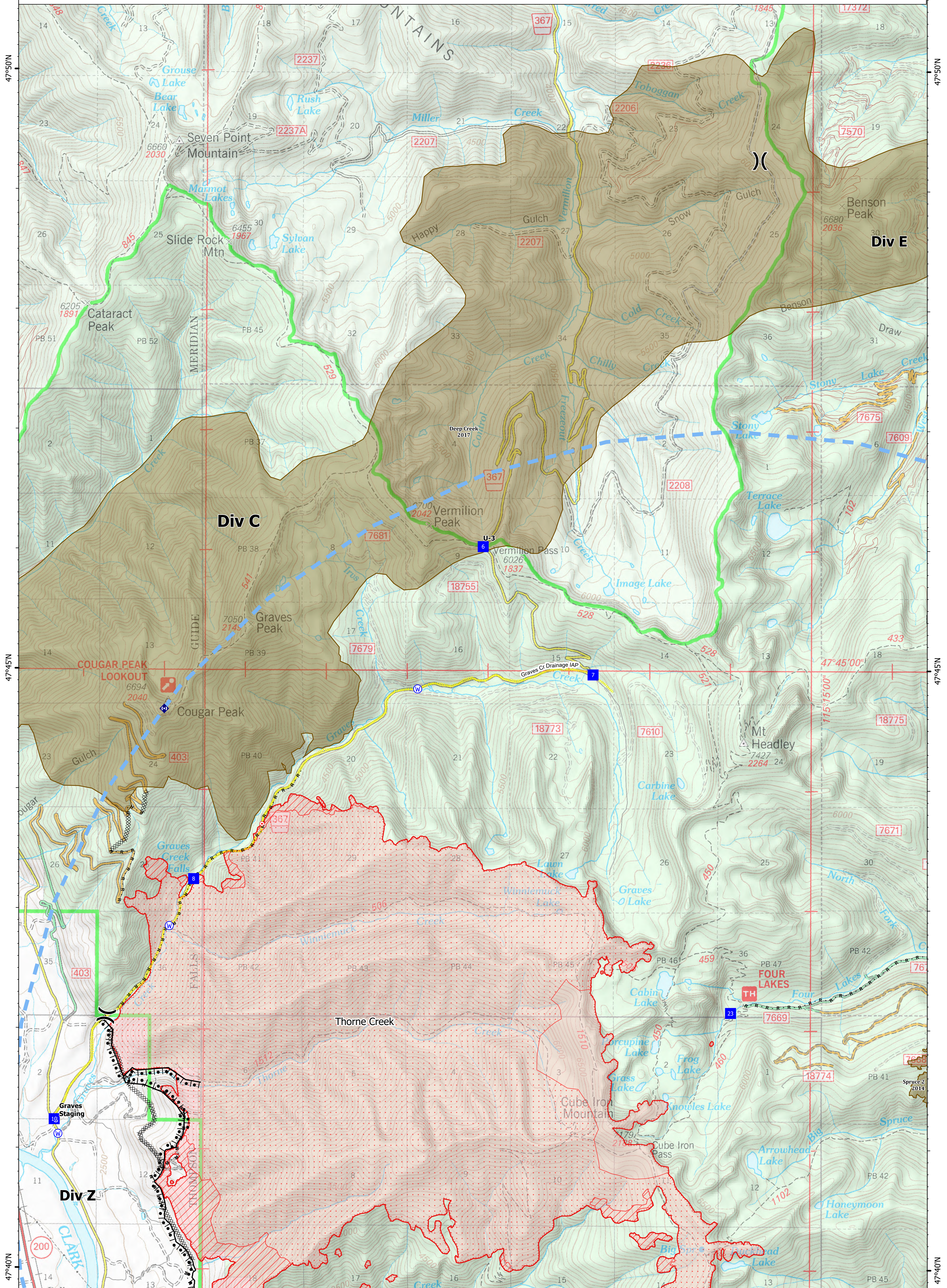
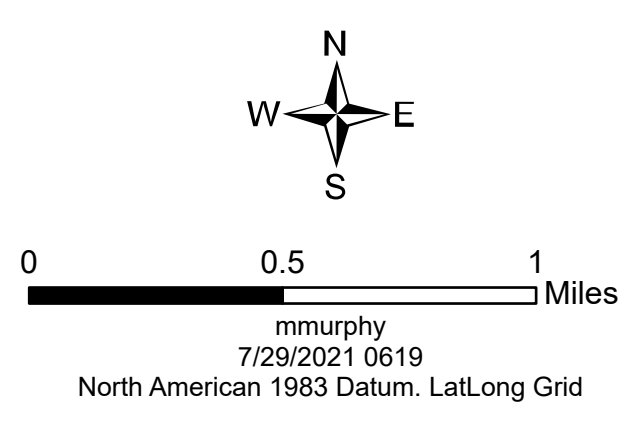


Ops Map

West Lolo Complex - Div C
 MT-LNF-000893
 7/29/21 Day
 11,773 acres at 7/28/21 @ 2240

- Unimproved Landing Area
- ⌋ Division Break
- Drop Point
- ⊠ Staging Area
- Hot Spot - Spot Fire
- ⬇ Repeater
- ⊕ Water Source
- ⊖ Completed Burnout
- ⊗ Completed Dozer Line
- ⋄ Completed Hand Line
- M - Completed Mixed Construction Line
- R - Completed Road as Line
- Access or Improved Road
- ⚡ Incident Action Point
- ⚡ Temporary Flight Restriction
- Fire Edge
- ▨ IR Intense Heat
- ▨ IR Scattered Heat
- ▨ Wildfire Daily Fire Perimeter
- ▨ Fire History

Type	Label	Latitude	Longitude
Water Source	47° 41.117' N 115° 24.288' W	47° 42.859' N 115° 22.925' W	47° 44.839' N 115° 19.867' W
Water Development or Draft Site	47° 42.855' N 115° 22.925' W	47° 42.855' N 115° 22.925' W	47° 42.855' N 115° 22.925' W
Drop Point	10	47° 41.239' N 115° 24.335' W	47° 42.141' N 115° 15.984' W
Drop Point	23	47° 46.028' N 115° 19.064' W	47° 46.028' N 115° 19.064' W
Drop Point	6	47° 44.961' N 115° 17.699' W	47° 44.961' N 115° 17.699' W
Drop Point	7	47° 44.961' N 115° 17.699' W	47° 44.961' N 115° 17.699' W
Drop Point	8	47° 43.248' N 115° 22.627' W	47° 43.248' N 115° 22.627' W
Unimproved Landing Area	U-3	47° 46.029' N 115° 19.064' W	47° 46.029' N 115° 19.064' W



47°50'N

47°45'N

47°40'N

47°35'N

47°30'N

47°25'N

47°20'N

47°15'N

47°10'N

47°05'N

47°00'N

46°55'N

46°50'N

47°50'N

47°45'N

47°40'N

47°35'N

47°30'N

47°25'N

47°20'N

47°15'N

47°10'N

47°05'N

47°00'N

46°55'N

46°50'N

115°20'W

115°15'W