

115°25'W

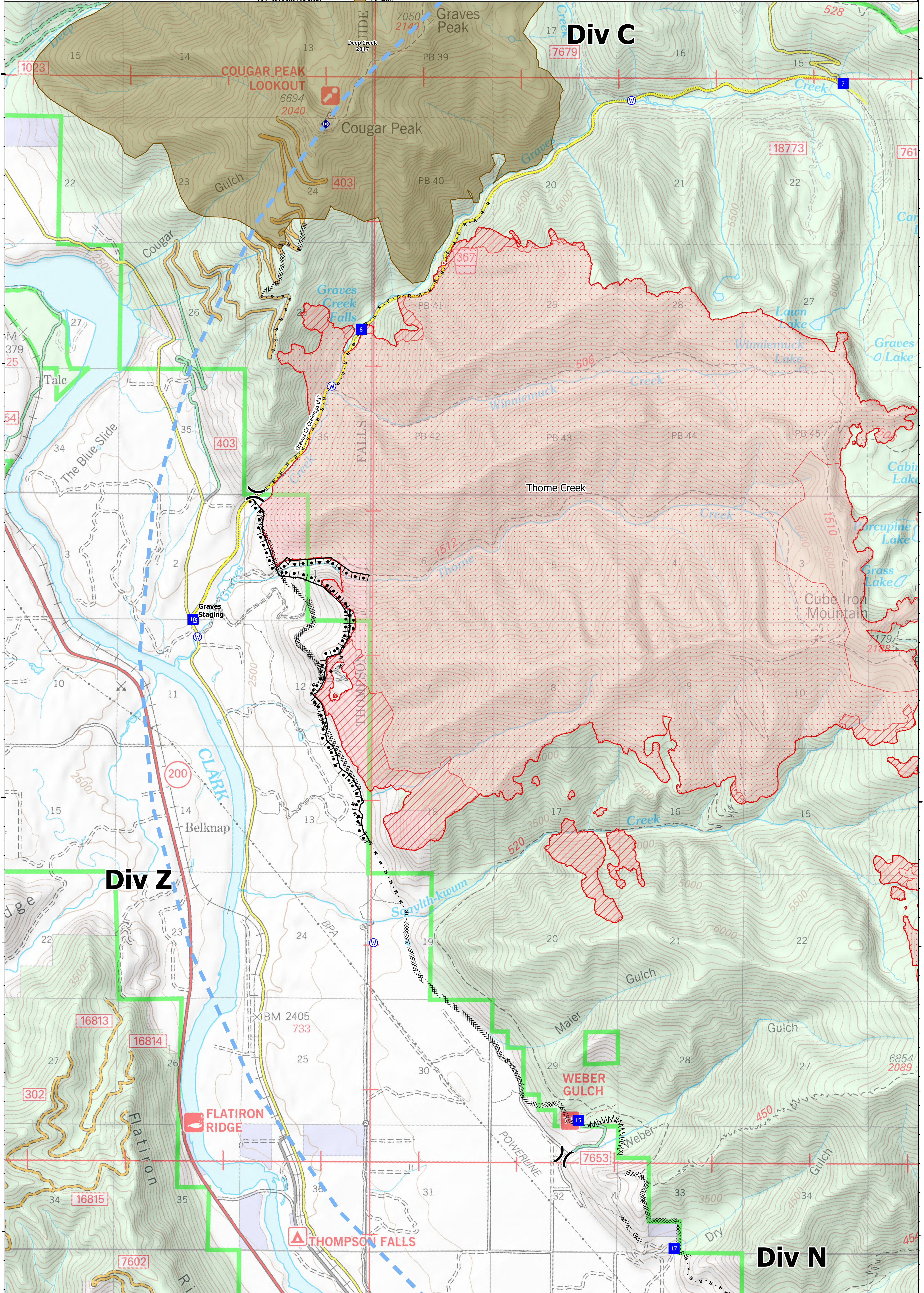
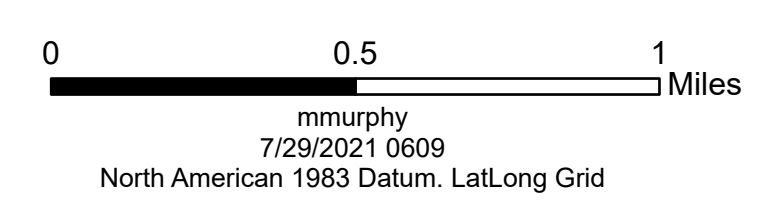
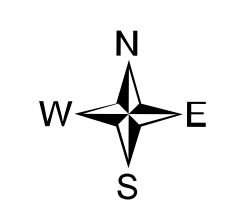
115°20'W



Ops Map
 West Lolo Complex - Div Z
 MT-LNF-000893
 7/29/21 Day
 11,773 acres at 7/28/21 @ 2240

- Unimproved Landing Area
- ⌋ Division Break
- Drop Point
- Staging Area
- Hot Spot - Spot Fire
- ⊕ Repeater
- ⊕ Water Source
- ⊕ Completed Burnout
- ⊕ Completed Dozer Line
- ⊕ Completed Fuel Break
- H - Completed Hand Line
- M - Completed Mixed Construction Line
- R - Completed Road as Line
- Access or Improved Road
- Incident Action Point
- Temporary Flight Restriction
- Fire Edge
- IR Intense Heat
- IR Scattered Heat
- Wildfire Daily Fire Perimeter
- Fire History

| Type | Label | Latitude | Longitude |
|---------------------------------|-------|------------------------------|-----------|
| Water Source | | 47° 41.117' N 115° 24.288' W | |
| Water Development or Draft Site | | 47° 42.859' N 115° 22.925' W | |
| Water Source | | 47° 44.839' N 115° 19.867' W | |
| Water Source | | 47° 42.855' N 115° 22.925' W | |
| Water Source | | 47° 39.009' N 115° 22.471' W | |
| Drop Point | 10 | 47° 41.239' N 115° 24.335' W | |
| Drop Point | 15 | 47° 37.789' N 115° 20.369' W | |
| Drop Point | 17 | 47° 36.905' N 115° 19.383' W | |
| Drop Point | 6 | 47° 46.028' N 115° 19.064' W | |
| Drop Point | 7 | 47° 44.961' N 115° 17.699' W | |
| Drop Point | 8 | 47° 43.248' N 115° 22.627' W | |
| Drop Point | U-3 | 47° 46.029' N 115° 19.064' W | |



115°25'W

115°20'W