

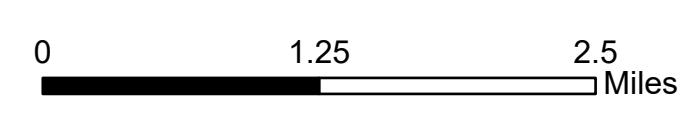
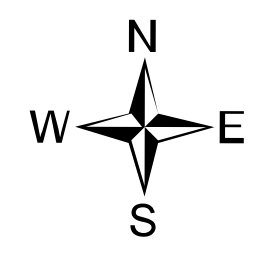
# Ops Map

West Lolo Complex - Thorne  
 MT-LNF-000893  
 7/29/21 Day  
 11,773 acres at 7/28/21 @ 2240

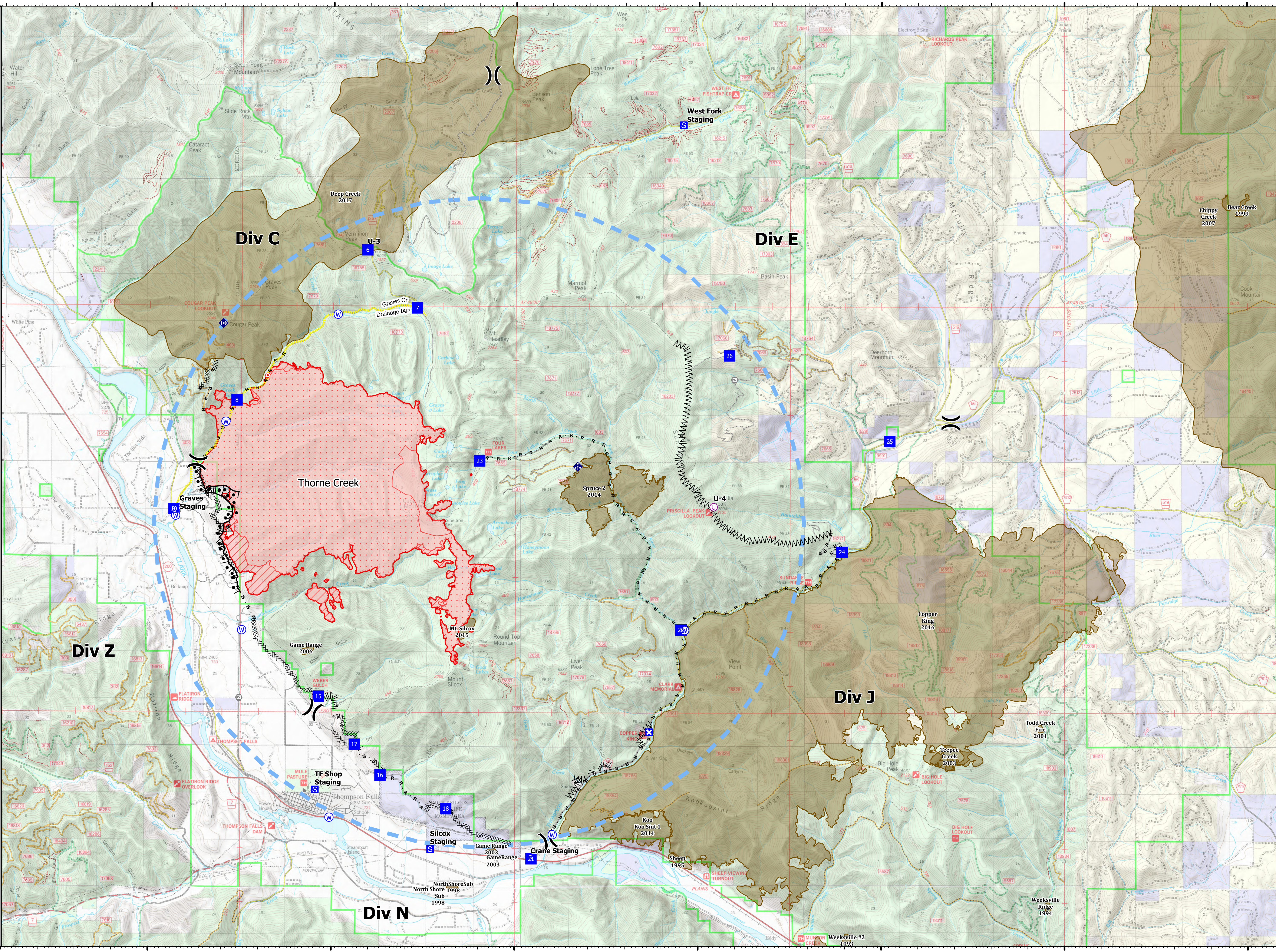


- Unimproved Landing Area
- Division Break
- Drop Point
- Closure
- Staging Area
- Hot Spot - Spot Fire
- Gate
- Mobile Weather Unit
- Repeater
- Water Source
- Completed Burnout
- Completed Dozer Line
- Completed Fuel Break
- Completed Hand Line
- Completed Mixed Construction Line
- Completed Road as Line
- Access or Improved Road
- Incident Action Point
- Temporary Flight Restriction
- Fire Edge
- IR Intense Heat
- IR Scattered Heat
- Wildfire Daily Fire Perimeter
- Fire History

| Type                            | Label                            | Latitude      | Longitude      |
|---------------------------------|----------------------------------|---------------|----------------|
| Water Source                    | 47° 41.117' N 115° 24.288' W     | 47° 41.117' N | 115° 24.288' W |
| Water Development or Draft Site | 47° 42.859' N 115° 22.925' W     | 47° 42.859' N | 115° 22.925' W |
| Water Source                    | 47° 44.839' N 115° 19.867' W     | 47° 44.839' N | 115° 19.867' W |
| Water Source                    | 47° 42.855' N 115° 22.925' W     | 47° 42.855' N | 115° 22.925' W |
| Water Source                    | 47° 35.247' N 115° 13.972' W     | 47° 35.247' N | 115° 13.972' W |
| Water Source                    | 47° 39.021' N 115° 10.373' W     | 47° 39.021' N | 115° 10.373' W |
| Water Source                    | 47° 35.556' N 115° 20.064' W     | 47° 35.556' N | 115° 20.064' W |
| Water Source                    | 47° 39.009' N 115° 22.471' W     | 47° 39.009' N | 115° 22.471' W |
| Drop Point                      | 10 47° 41.239' N 115° 24.335' W  | 47° 41.239' N | 115° 24.335' W |
| Drop Point                      | 15 47° 37.789' N 115° 20.369' W  | 47° 37.789' N | 115° 20.369' W |
| Drop Point                      | 16 47° 36.338' N 115° 18.675' W  | 47° 36.338' N | 115° 18.675' W |
| Drop Point                      | 17 47° 36.905' N 115° 19.383' W  | 47° 36.905' N | 115° 19.383' W |
| Drop Point                      | 18 47° 35.722' N 115° 16.879' W  | 47° 35.722' N | 115° 16.879' W |
| Drop Point                      | 21 47° 34.801' N 115° 14.549' W  | 47° 34.801' N | 115° 14.549' W |
| Drop Point                      | 22 47° 39.030' N 115° 10.472' W  | 47° 39.030' N | 115° 10.472' W |
| Drop Point                      | 23 47° 42.141' N 115° 15.984' W  | 47° 42.141' N | 115° 15.984' W |
| Drop Point                      | 24 47° 40.469' N 115° 06.079' W  | 47° 40.469' N | 115° 06.079' W |
| Drop Point                      | 25 47° 42.515' N 115° 04.775' W  | 47° 42.515' N | 115° 04.775' W |
| Drop Point                      | 26 47° 44.091' N 115° 09.160' W  | 47° 44.091' N | 115° 09.160' W |
| Drop Point                      | 6 47° 46.028' N 115° 19.064' W   | 47° 46.028' N | 115° 19.064' W |
| Drop Point                      | 7 47° 44.961' N 115° 17.099' W   | 47° 44.961' N | 115° 17.099' W |
| Drop Point                      | 8 47° 43.248' N 115° 22.627' W   | 47° 43.248' N | 115° 22.627' W |
| Unimproved Landing Area         | U-3 47° 46.029' N 115° 19.064' W | 47° 46.029' N | 115° 19.064' W |
| Unimproved Landing Area         | U-4 47° 41.298' N 115° 09.587' W | 47° 41.298' N | 115° 09.587' W |



mmurphy  
 7/29/2021 0540  
 North American 1983 Datum, Lat/Long Grid



47°50'N  
 47°45'N  
 47°40'N  
 47°35'N  
 115°30'W  
 115°25'W  
 115°20'W  
 115°15'W  
 115°10'W  
 115°5'W  
 115°W  
 114°55'W