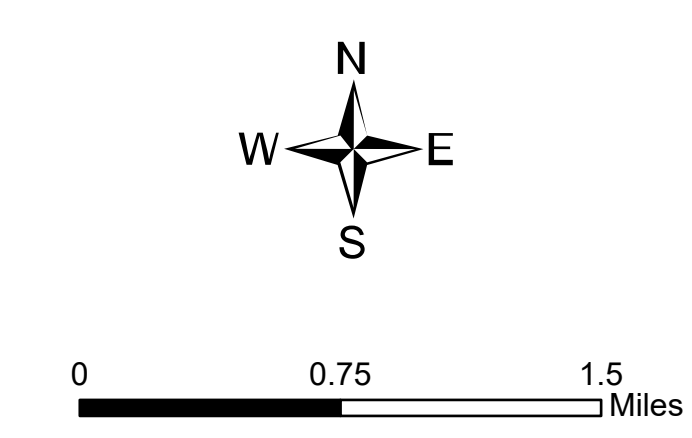


**Ops Map**  
 West Lolo Complex - Div E  
 MT-LNF-000893  
 7/30/21 Day  
 13,831 acres at 7/29/21 @ 2230

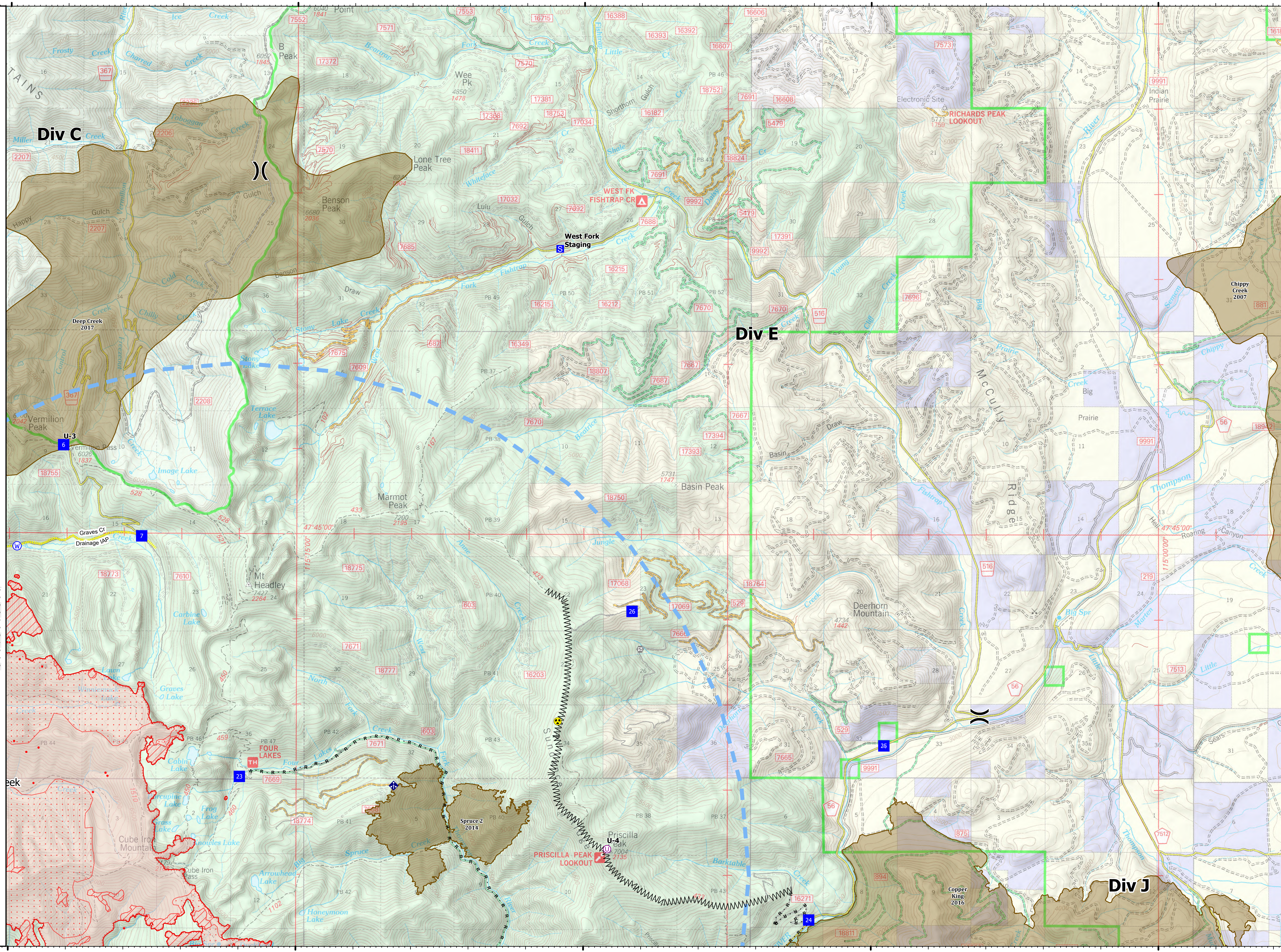


- Unimproved Landing Area
- Division Break
- Drop Point
- Closure
- Staging Area
- Hot Spot - Spot Fire
- Gate
- Mobile Weather Unit
- Hazard
- Water Source
- IR Isolated Heat Source
- Completed Burnout
- Completed Dozer Line
- Completed Fuel Break
- Completed Mixed Construction Line
- Completed Road as Line
- Access or Improved Road
- Incident Action Point
- Temporary Flight Restriction
- Fire Edge
- IR Intense Heat
- IR Scattered Heat
- Wildfire Daily Fire Perimeter
- Fire History

| Type                    | Label | Latitude      | Longitude      |
|-------------------------|-------|---------------|----------------|
| Water Source            |       | 47° 44.839' N | 115° 19.867' W |
| Hazard                  |       | 47° 42.798' N | 115° 10.449' W |
| Drop Point              | 23    | 47° 42.141' N | 115° 15.984' W |
| Drop Point              | 24    | 47° 40.469' N | 115° 06.079' W |
| Drop Point              | 25    | 47° 42.515' N | 115° 04.725' W |
| Drop Point              | 26    | 47° 44.091' N | 115° 09.160' W |
| Drop Point              | 6     | 47° 46.028' N | 115° 19.064' W |
| Drop Point              | 7     | 47° 44.961' N | 115° 17.699' W |
| Drop Point              | 8     | 47° 43.248' N | 115° 22.627' W |
| Unimproved Landing Area | U-3   | 47° 46.029' N | 115° 19.064' W |
| Unimproved Landing Area | U-4   | 47° 41.298' N | 115° 09.587' W |



mmurphy  
 7/30/2021 0539  
 North American 1983 Datum, Lat/Long Grid



115°20'W 115°15'W 115°10'W 115°5'W 115°W

47°50'N 47°45'N

47°50'N 47°45'N