

115°25'W

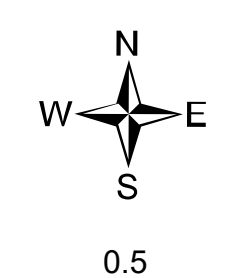
115°20'W



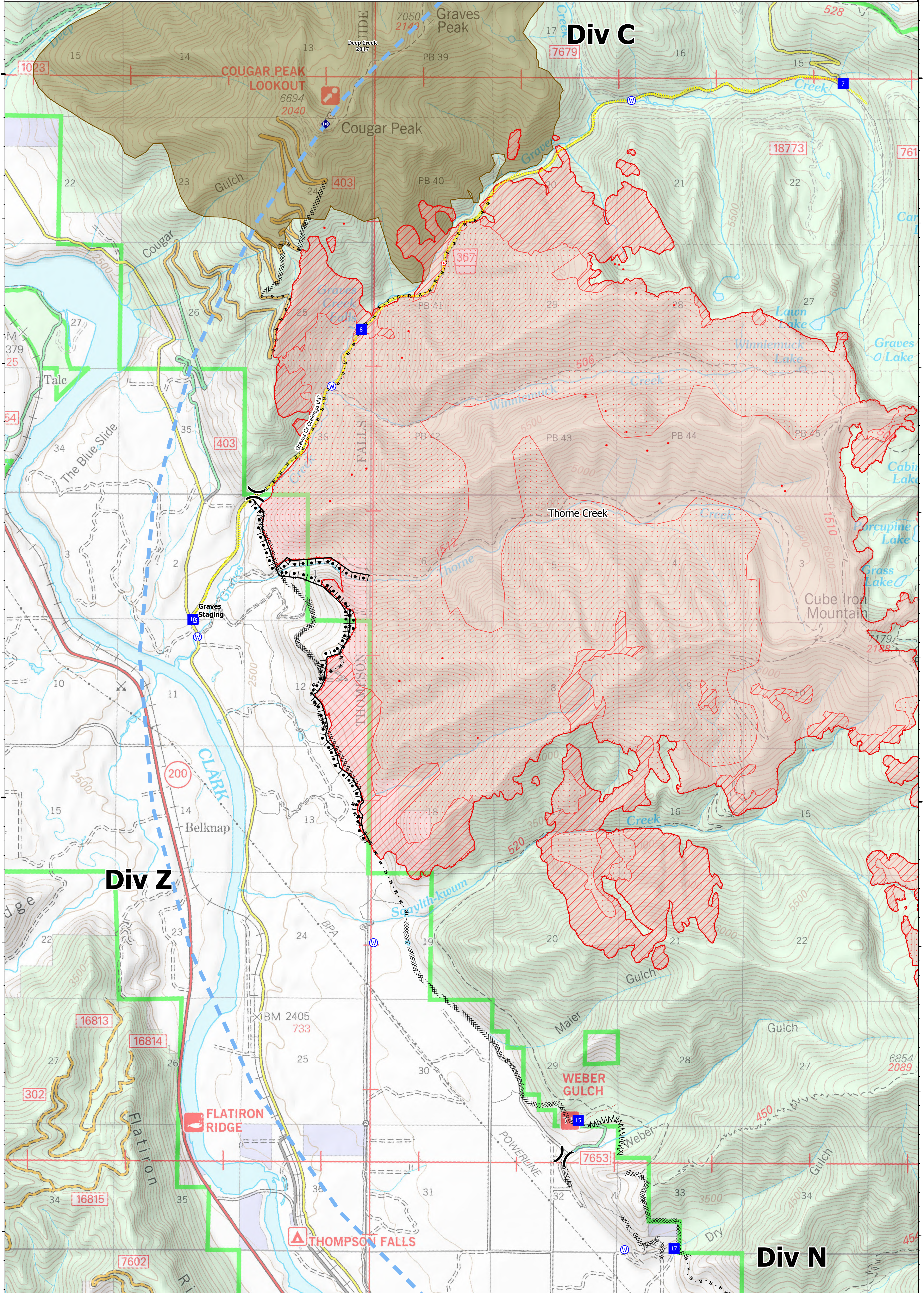
Ops Map
 West Lolo Complex - Div Z
 MT-LNF-000893
 7/30/21 Day
 13,831 acres at 7/29/21 @ 2230

- Unimproved Landing Area
- ⌘ Division Break
- Drop Point
- Ⓜ Staging Area
- ⦿ Hot Spot - Spot Fire
- ⦿ Gate
- ⦿ Repeater
- ⦿ Water Source
- ⦿ IR Isolated Heat Source
- ⦿ Completed Burnout
- ⦿ Completed Dozer Line
- ⦿ Completed Fuel Break
- H - Completed Hand Line
- M - Completed Mixed Construction Line
- R - Completed Road as Line
- Access or Improved Road
- ⦿ Incident Action Point
- ⦿ Temporary Flight Restriction
- Fire Edge
- ⦿ IR Intense Heat
- ⦿ IR Scattered Heat
- ⦿ Wildfire Daily Fire Perimeter
- ⦿ Fire History

Type	Label	Latitude	Longitude
Water Source		47° 41.117' N 115° 24.288' W	
Water Development or Draft Site		47° 42.855' N 115° 22.925' W	
Water Source		47° 44.839' N 115° 19.865' W	
Water Source		47° 42.855' N 115° 22.925' W	
Water Source		47° 39.009' N 115° 22.471' W	
Water Source		47° 36.895' N 115° 19.888' W	
Drop Point	10	47° 41.239' N 115° 24.335' W	
Drop Point	15	47° 37.789' N 115° 20.369' W	
Drop Point	17	47° 36.909' N 115° 19.385' W	
Drop Point	6	47° 46.028' N 115° 19.064' W	
Drop Point	7	47° 44.961' N 115° 17.699' W	
Drop Point	8	47° 43.248' N 115° 22.627' W	
Unimproved Landing Area	U-3	47° 46.029' N 115° 19.064' W	



0 0.5 1 Miles
 mmurphy
 7/30/2021 0537
 North American 1983 Datum. Lat,Long Grid



115°25'W

115°20'W

47°45'N

47°45'N

47°40'N

47°40'N

47°45'N