

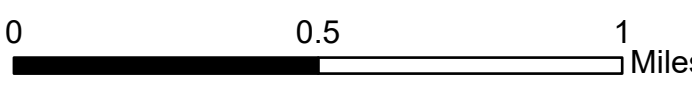
# Ops Map

West Lolo Complex - Div N  
 MT-LNF-000893  
 8/1/21 Day  
 17,685 acres at 7/31/21 @ 2230

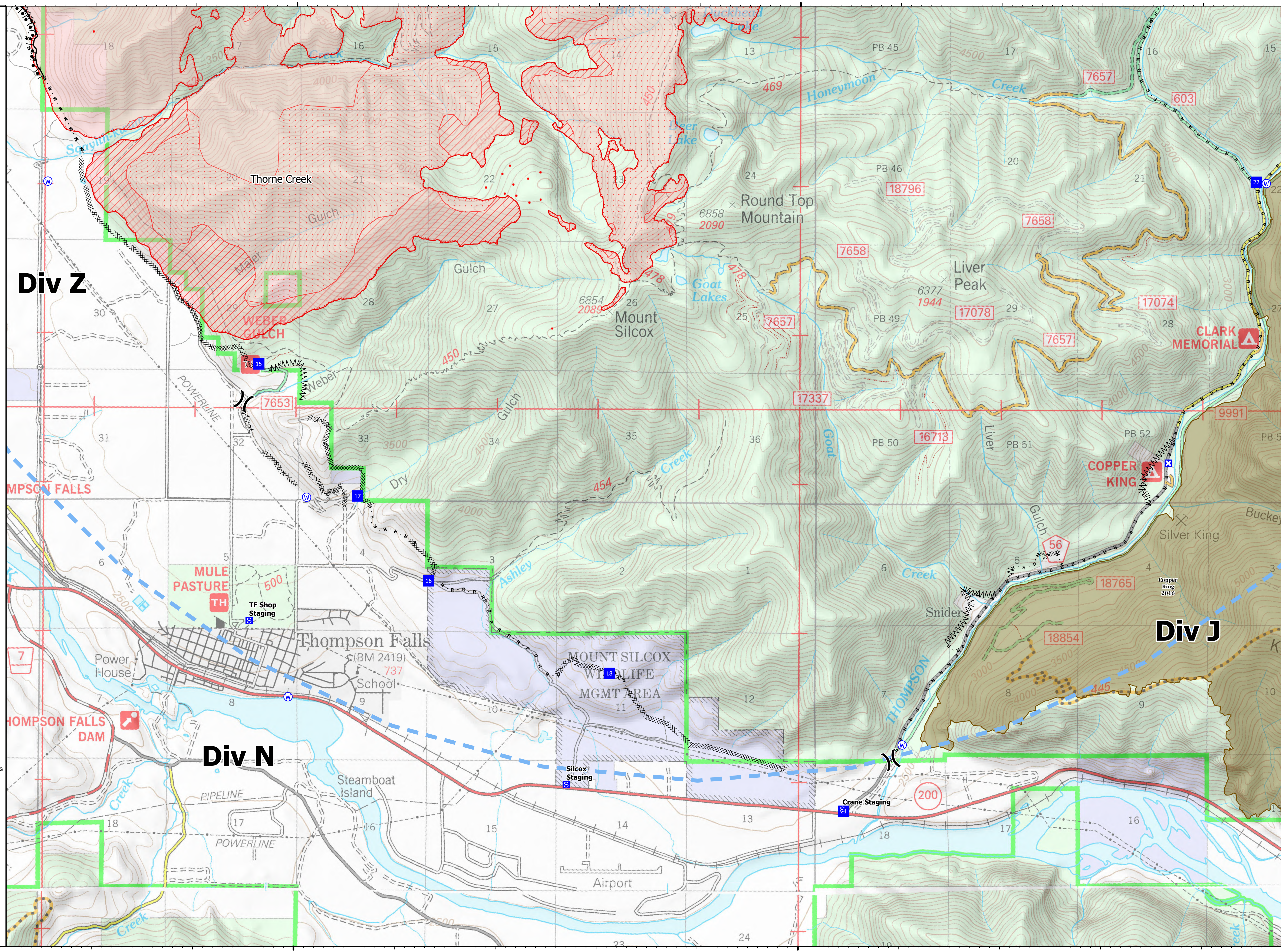


- (X) Division Break
- Drop Point
- ⊠ Closure
- ⊞ Staging Area
- ⊙ Gate
- ⊕ Water Source
- IR Isolated Heat Source
- ⊞ Completed Burnout
- ⊞ Completed Dozer Line
- ⊞ Completed Fuel Break
- ⊞ Completed Hand Line
- ⊞ Completed Mixed Construction Line
- ⊞ Completed Road as Line
- Access or Improved Road
- Temporary Flight Restriction
- Fire Edge
- ▨ IR Intense Heat
- ▨ IR Scattered Heat
- ▨ Wildfire Daily Fire Perimeter
- ▨ Fire History

Type	Label	Latitude	Longitude
Water Source		47° 35.247' N 115° 13.972' W	
Water Source		47° 39.021' N 115° 10.373' W	
Water Source		47° 35.556' N 115° 20.064' W	
Water Source		47° 39.009' N 115° 22.471' W	
Water Source		47° 36.895' N 115° 19.888' W	
Drop Point	15	47° 37.789' N 115° 20.369' W	
Drop Point	16	47° 36.338' N 115° 18.675' W	
Drop Point	17	47° 36.905' N 115° 19.383' W	
Drop Point	18	47° 35.722' N 115° 16.879' W	
Drop Point	21	47° 34.801' N 115° 14.549' W	
Drop Point	22	47° 39.030' N 115° 10.472' W	



mmurphy  
 8/1/2021 0520  
 North American 1983 Datum, LatLong Grid



**Div Z**

**MPSON FALLS**

**THOMPSON FALLS DAM**

**Div N**

**Div J**

**MULE PASTURE**

**Thompson Falls**

**MOUNT SILCOX W/LIFE MGMT AREA**

**COPPER KING**

**CLARK MEMORIAL**

**Div Z**

Thorne Creek

Round Top Mountain

Mount Silcox

Liver Peak

Power House

School

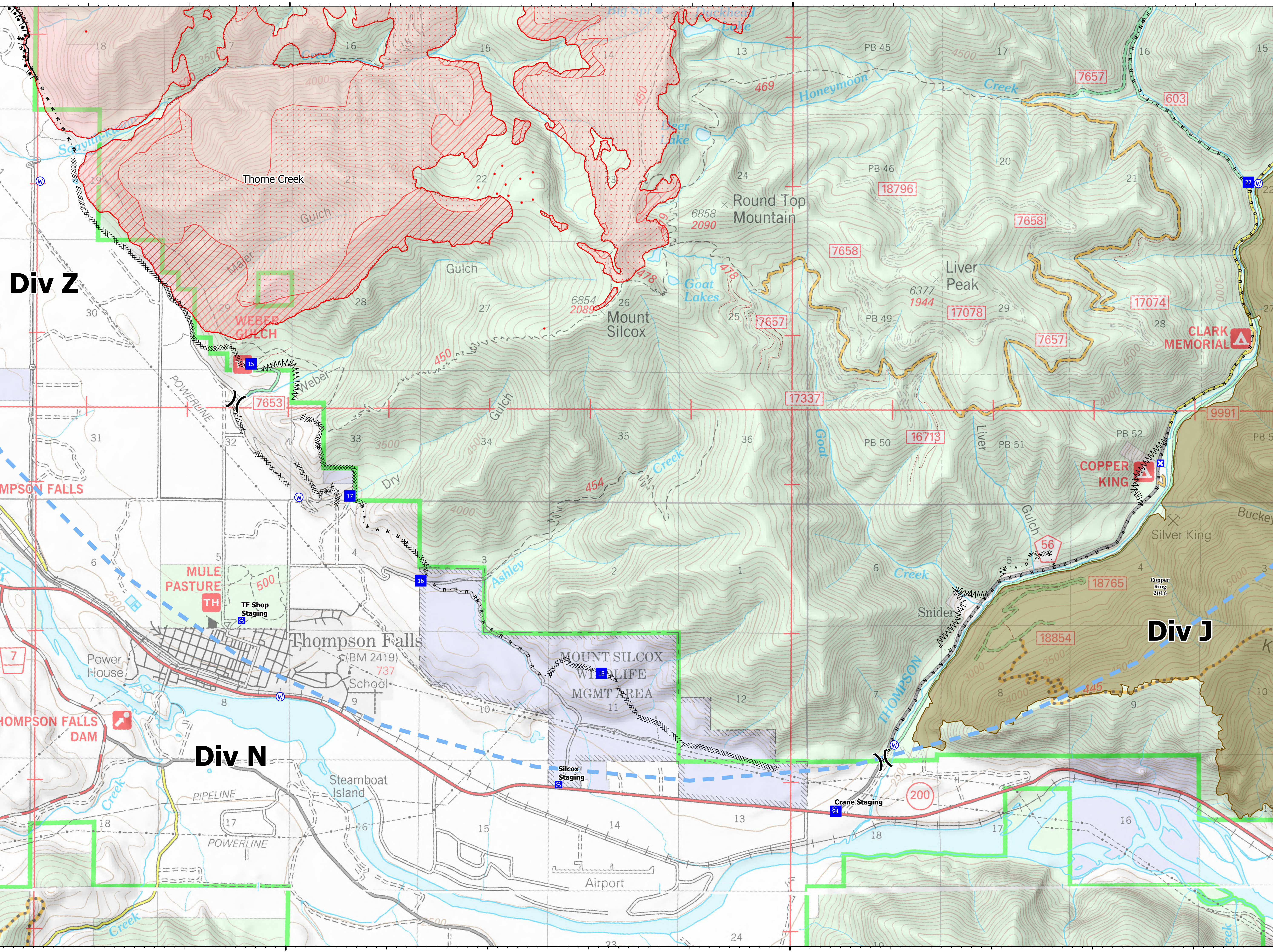
Steamboat Island

Airport

Silver King

Buckey

Copper King 2016



**Div Z**

**MPSON FALLS**

**THOMPSON FALLS DAM**

**Div N**

**Div J**

**MULE PASTURE**

**Thompson Falls**

**MOUNT SILCOX W/LIFE MGMT AREA**

**COPPER KING**

**CLARK MEMORIAL**

**Div Z**

Thorne Creek

Round Top Mountain

Mount Silcox

Liver Peak

Power House

School

Steamboat Island

Airport

Silver King

Buckey

Copper King 2016