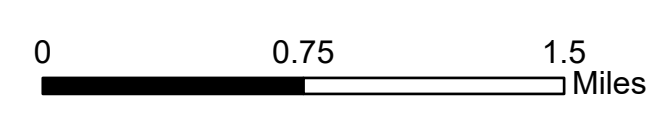


Ops Map
 West Lolo Complex - Div E
 MT-LNF-000893
 8/2/21 Day
 17,685 acres at 7/31/21 @ 2230

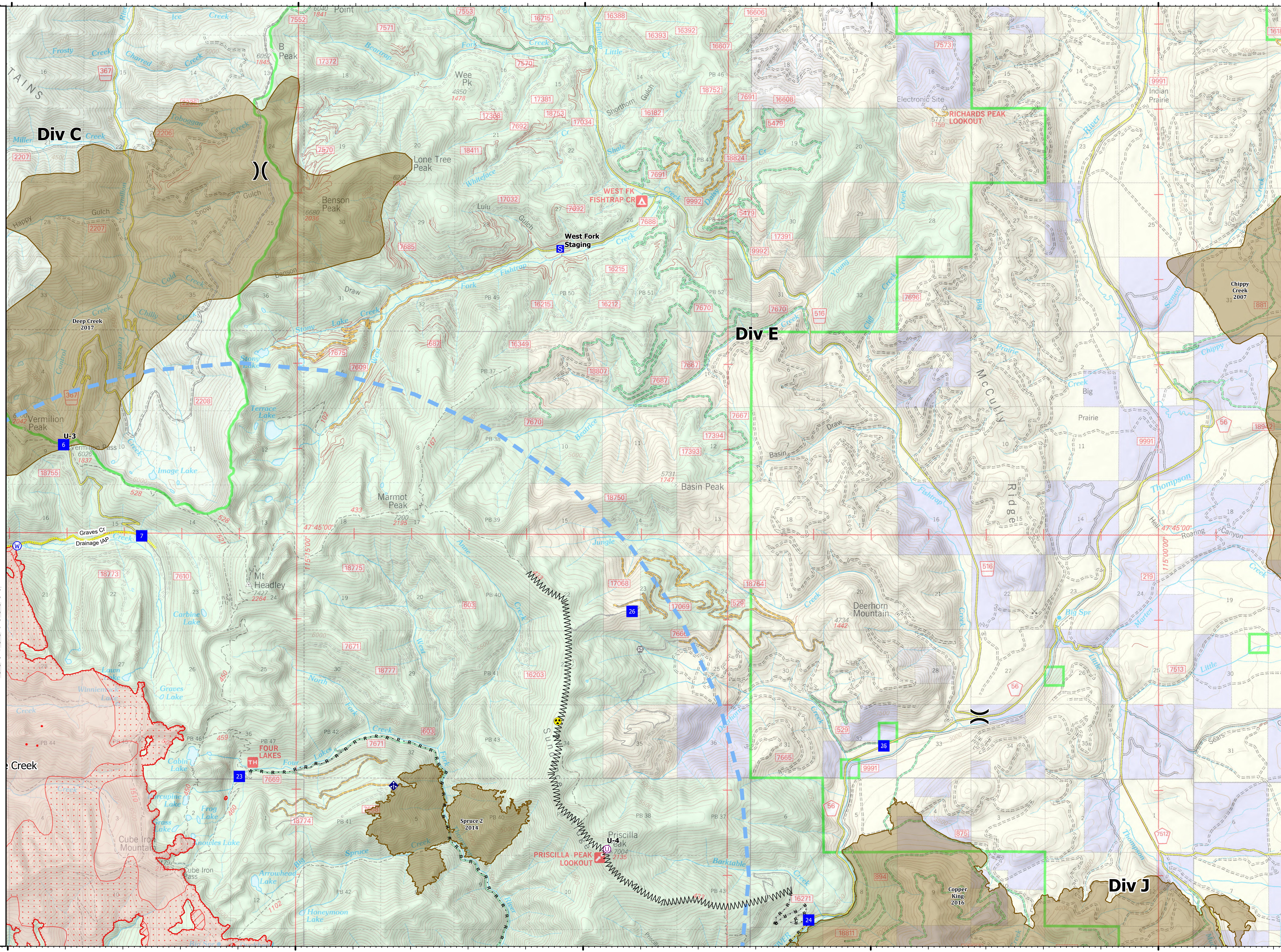


- Unimproved Landing Area
- Division Break
- Drop Point
- Closure
- Staging Area
- Gate
- Mobile Weather Unit
- Hazard
- Water Source
- IR Isolated Heat Source
- Completed Burnout
- Completed Dozer Line
- Completed Fuel Break
- Completed Mixed Construction Line
- Completed Road as Line
- Access or Improved Road
- Incident Action Point
- Temporary Flight Restriction
- Fire Edge
- IR Intense Heat
- IR Scattered Heat
- Wildfire Daily Fire Perimeter
- Fire History

| Type | Label | Latitude | Longitude |
|-------------------------|-------|------------------------------|-----------|
| Water Source | | 47° 44.839' N 115° 19.867' W | |
| Hazard | | 47° 42.798' N 115° 10.449' W | |
| Water Source | | 47° 43.280' N 115° 22.667' W | |
| Drop Point | 23 | 47° 42.141' N 115° 15.984' W | |
| Drop Point | 24 | 47° 40.469' N 115° 06.079' W | |
| Drop Point | 25 | 47° 42.515' N 115° 04.775' W | |
| Drop Point | 26 | 47° 44.091' N 115° 09.160' W | |
| Drop Point | 6 | 47° 46.028' N 115° 19.064' W | |
| Drop Point | 7 | 47° 44.961' N 115° 17.699' W | |
| Drop Point | 8 | 47° 43.248' N 115° 22.627' W | |
| Unimproved Landing Area | U-3 | 47° 46.029' N 115° 19.064' W | |
| Unimproved Landing Area | U-4 | 47° 41.298' N 115° 09.587' W | |



mmurphy
 8/1/2021 0518
 North American 1983 Datum, Lat/Long Grid



115°20'W 115°15'W 115°10'W 115°5'W 115°W

47°50'N

47°50'N

47°45'N

47°45'N