

Ops Map

West Lolo Complex - Thorne
MT-LNF-000893
8/3/21 Day
17,685 acres at 7/31/21 @ 2230



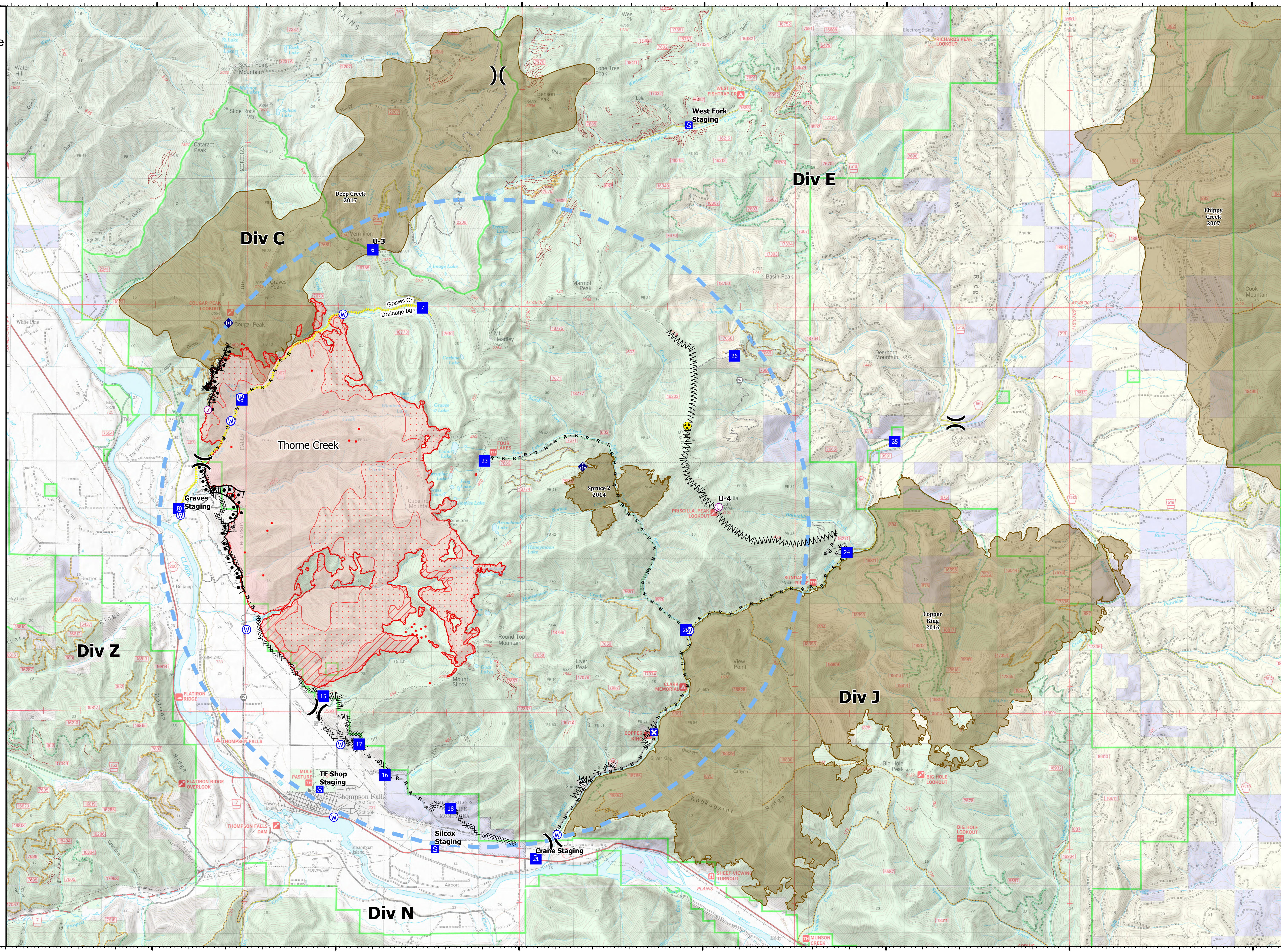
- Check Point
- Unimproved Landing Area
- ⌋ Division Break
- ⬇ Drop Point
- ⊠ Closure
- ⊞ Staging Area
- ⊞ Hot Spot - Spot Fire
- ⊞ Gate
- ⊞ Mobile Weather Unit
- ⊞ Repeater
- ⊞ Hazard
- ⊞ Water Source
- ⊞ IR Isolated Heat Source
- ⊞ Completed Burnout
- ⊞ Completed Dozer Line
- ⊞ Completed Fuel Break
- ⊞ Completed Hand Line
- ⊞ Completed Mixed Construction Line
- ⊞ Completed Road as Line
- ⊞ Access or Improved Road
- ⊞ Incident Action Point
- ⊞ Temporary Flight Restriction
- ⊞ Fire Edge
- ⊞ IR Intense Heat
- ⊞ IR Scattered Heat
- ⊞ Wildfire Daily Fire Perimeter
- ⊞ Fire History

Type	Label	Latitude	Longitude
Water Source	U-1	47° 41.117' N 115° 24.288' W	
Water Development or Draft Site	U-2	47° 42.859' N 115° 22.925' W	
Water Source	U-3	47° 44.839' N 115° 19.867' W	
Water Source	U-4	47° 42.855' N 115° 22.925' W	
Water Source	U-5	47° 35.247' N 115° 13.972' W	
Water Source	U-6	47° 39.021' N 115° 10.373' W	
Water Source	U-7	47° 35.556' N 115° 20.064' W	
Water Source	U-8	47° 39.009' N 115° 22.471' W	
Water Source	U-9	47° 36.895' N 115° 19.888' W	
Water Source	U-10	47° 42.996' N 115° 10.449' W	
Water Source	U-11	47° 43.200' N 115° 22.667' W	
Water Source	U-12	47° 42.862' N 115° 22.930' W	
Check Point	U-13	47° 43.061' N 115° 23.554' W	
Drop Point	U-14	47° 41.239' N 115° 24.335' W	
Drop Point	U-15	47° 37.789' N 115° 20.369' W	
Drop Point	U-16	47° 36.338' N 115° 18.675' W	
Drop Point	U-17	47° 36.905' N 115° 19.383' W	
Drop Point	U-18	47° 35.722' N 115° 16.879' W	
Drop Point	U-19	47° 34.801' N 115° 14.549' W	
Drop Point	U-20	47° 39.030' N 115° 10.472' W	
Drop Point	U-21	47° 42.141' N 115° 15.984' W	
Drop Point	U-22	47° 40.469' N 115° 06.079' W	
Drop Point	U-23	47° 42.515' N 115° 04.775' W	
Drop Point	U-24	47° 44.091' N 115° 09.160' W	
Drop Point	U-25	47° 46.028' N 115° 19.064' W	
Drop Point	U-26	47° 44.961' N 115° 17.699' W	
Drop Point	U-27	47° 43.248' N 115° 22.627' W	
Unimproved Landing Area	U-28	47° 46.029' N 115° 19.064' W	
Unimproved Landing Area	U-29	47° 41.298' N 115° 09.584' W	



0 1.25 2.5 Miles

mmurphy
8/1/2021 0504
North American 1983 Datum, LatLong Grid



47°50'N
47°45'N
47°40'N
47°35'N

115°30'W
115°25'W
115°20'W
115°15'W
115°10'W
115°5'W
115°W
114°55'W