

115°25'W

115°20'W



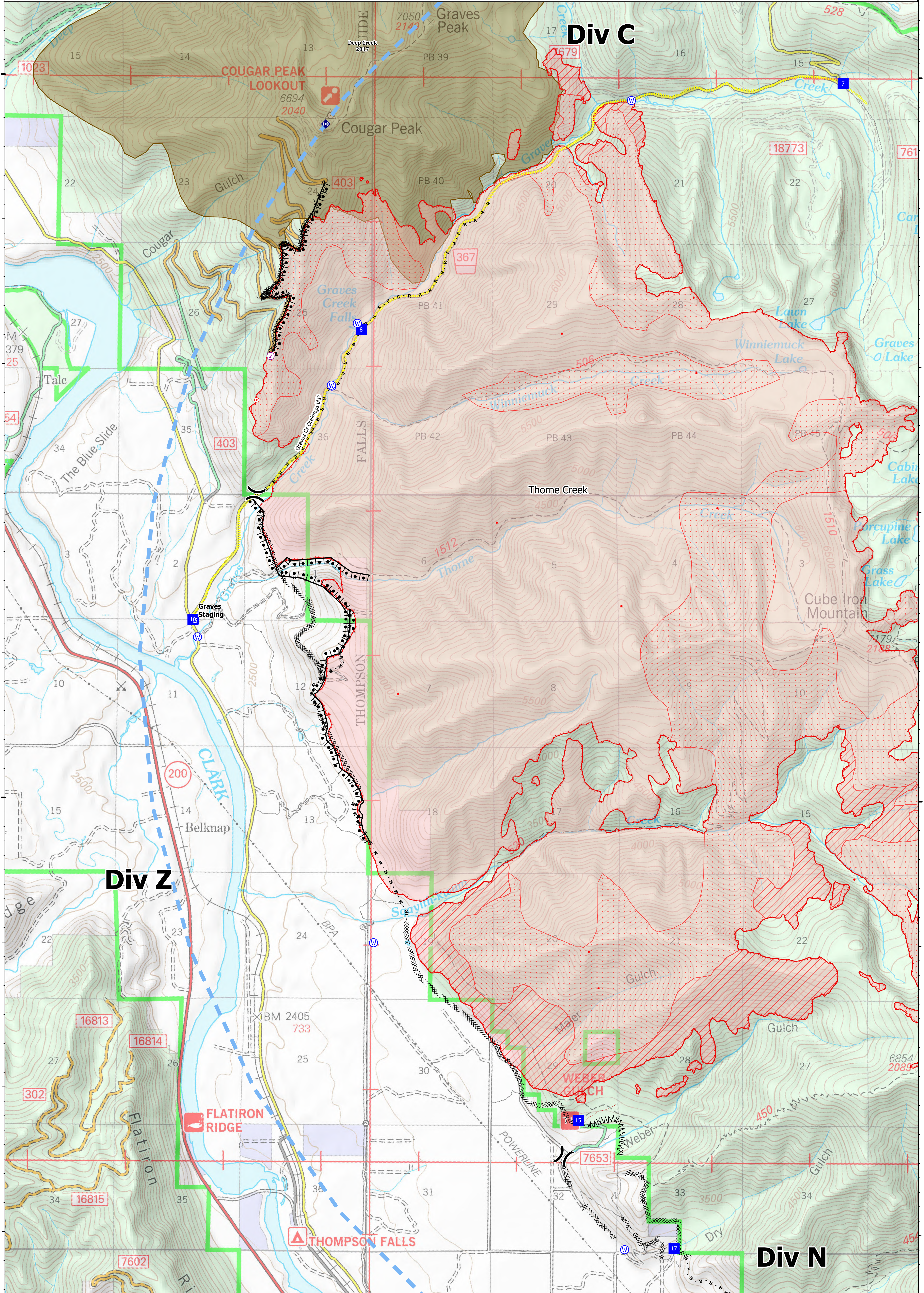
Ops Map
 West Lolo Complex - Div Z
 MT-LNF-000893
 8/4/21 Day
 17,923 acres at 8/3/21 @ 2206

- Check Point
- Unimproved Landing Area
- ⌘ Division Break
- Drop Point
- Staging Area
- Hot Spot - Spot Fire
- Gate
- ⊕ Repeater
- ⊕ Water Source
- ⊕ IR Isolated Heat Source
- ⊕ Completed Burnout
- ⊕ Completed Dozer Line
- M Completed Fuel Break
- H Completed Hand Line
- M Completed Mixed Construction Line
- R Completed Road as Line
- Access or Improved Road
- ▬ Incident Action Point
- ▬ Temporary Flight Restriction
- ▬ Fire Edge
- ▬ IR Intense Heat
- ▬ IR Scattered Heat
- ▬ Wildfire Daily Fire Perimeter
- ▬ Fire History

Type	Label	Latitude	Longitude
Water Source		47° 41.117' N 115° 24.298' W	
Water Source		47° 42.859' N 115° 22.925' W	
Water Source		47° 44.839' N 115° 19.867' W	
Water Source		47° 42.859' N 115° 22.925' W	
Water Source		47° 39.009' N 115° 22.471' W	
Water Source		47° 36.895' N 115° 19.888' W	
Water Source		47° 43.290' N 115° 22.667' W	
Water Source		47° 42.862' N 115° 22.939' W	
Check Point		47° 43.061' N 115° 23.554' W	
Drop Point		10 47° 41.239' N 115° 24.335' W	
Drop Point		15 47° 33.789' N 115° 20.369' W	
Drop Point		17 47° 36.905' N 115° 19.383' W	
Drop Point		6 47° 46.028' N 115° 19.064' W	
Drop Point		7 47° 44.961' N 115° 17.699' W	
Drop Point		8 47° 43.246' N 115° 22.627' W	
Drop Point		47° 46.029' N 115° 19.064' W	



0 0.5 1 Miles
 mmurphy
 8/4/2021 0524
 North American 1983 Datum, Lat,Long Grid



115°25'W

115°20'W