

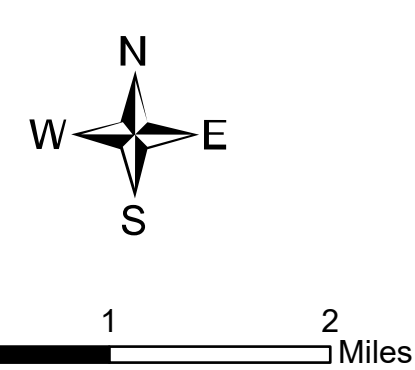
Ops Map

West Lolo Complex - Thorne
MT-LNF-000893
8/4/21 Day
17,923 acres at 8/3/21 @ 2206

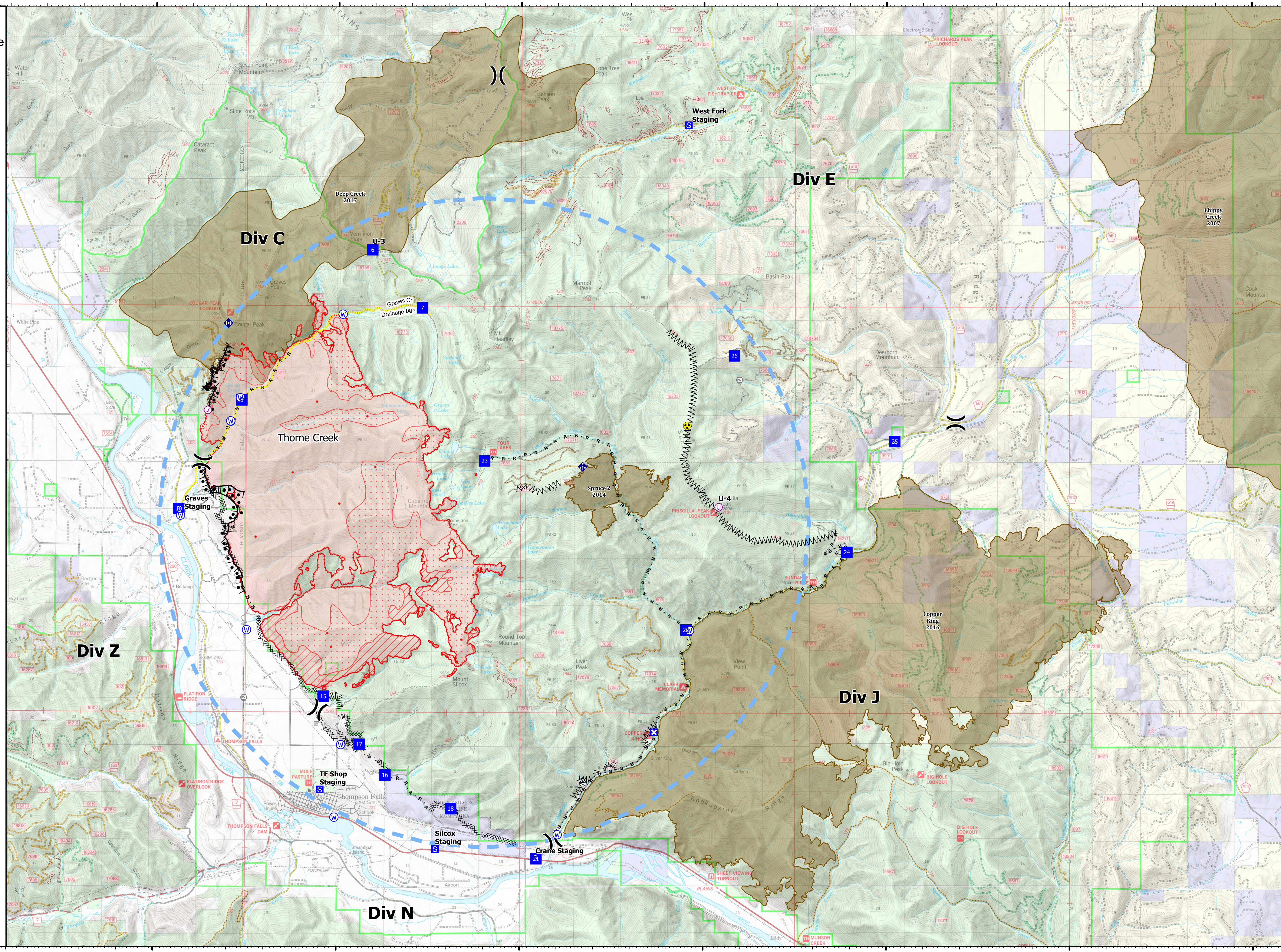


- Check Point
- Unimproved Landing Area
- ⌋ Division Break
- Drop Point
- Closure
- Staging Area
- Hot Spot - Spot Fire
- Gate
- Mobile Weather Unit
- Repeater
- Hazard
- Water Source
- IR Isolated Heat Source
- Completed Burnout
- Completed Dozer Line
- Completed Fuel Break
- Completed Hand Line
- Completed Mixed Construction Line
- Completed Road as Line
- Access or Improved Road
- Incident Action Point
- Temporary Flight Restriction
- Fire Edge
- IR Intense Heat
- IR Scattered Heat
- Wildfire Daily Fire Perimeter
- Fire History

Type	Label	Latitude	Longitude
Water Source	U-3	47° 41.117' N 115° 24.288' W	
Water Development or Draft Site		47° 42.859' N 115° 22.925' W	
Water Source		47° 44.839' N 115° 19.867' W	
Water Source		47° 42.855' N 115° 22.925' W	
Water Source		47° 35.247' N 115° 13.972' W	
Water Source		47° 39.021' N 115° 10.379' W	
Water Source		47° 35.556' N 115° 20.064' W	
Water Source		47° 39.009' N 115° 22.471' W	
Water Source		47° 36.895' N 115° 19.888' W	
Water Source		47° 42.996' N 115° 10.449' W	
Water Source		47° 43.200' N 115° 22.667' W	
Water Source		47° 42.862' N 115° 22.930' W	
Check Point		47° 43.061' N 115° 23.554' W	
Drop Point	10	47° 41.239' N 115° 24.335' W	
Drop Point	15	47° 37.789' N 115° 20.369' W	
Drop Point	16	47° 36.338' N 115° 18.675' W	
Drop Point	17	47° 36.905' N 115° 19.383' W	
Drop Point	18	47° 35.722' N 115° 16.879' W	
Drop Point	21	47° 34.801' N 115° 14.549' W	
Drop Point	22	47° 39.030' N 115° 10.472' W	
Drop Point	23	47° 42.141' N 115° 15.984' W	
Drop Point	24	47° 40.469' N 115° 06.079' W	
Drop Point	25	47° 42.515' N 115° 04.775' W	
Drop Point	26	47° 44.091' N 115° 09.160' W	
Drop Point	6	47° 46.028' N 115° 19.064' W	
Drop Point	7	47° 44.961' N 115° 17.699' W	
Drop Point	8	47° 43.248' N 115° 22.627' W	
Unimproved Landing Area	U-3	47° 46.029' N 115° 19.064' W	
Unimproved Landing Area	U-4	47° 41.298' N 115° 09.587' W	



mmurphy
8/4/2021 05:23
North American 1983 Datum, LatLong Grid



47°50N
47°45N
47°40N
47°35N

115°30W
115°25W
115°20W
115°15W
115°10W
115°5W
115°W
114°55W