

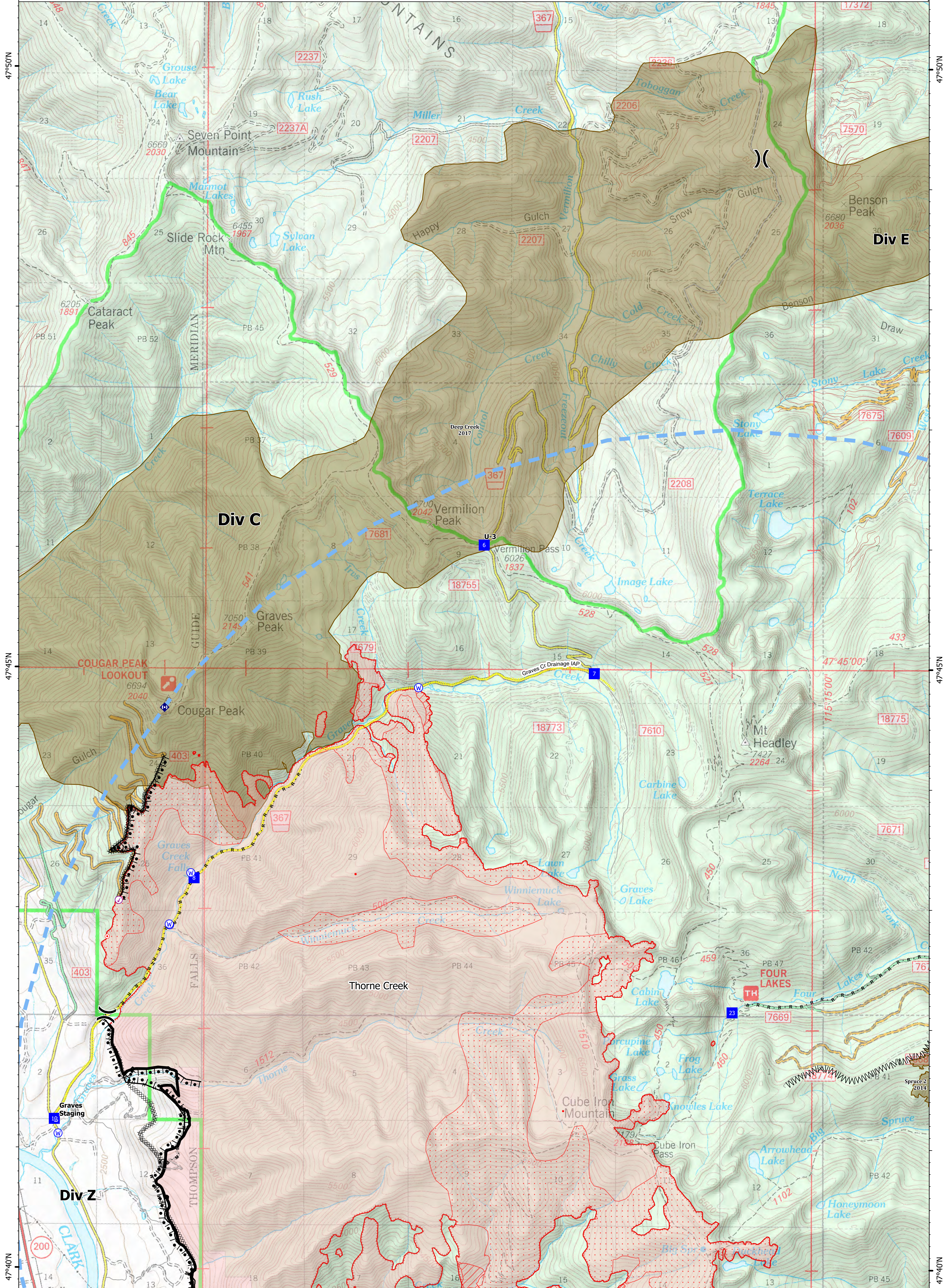
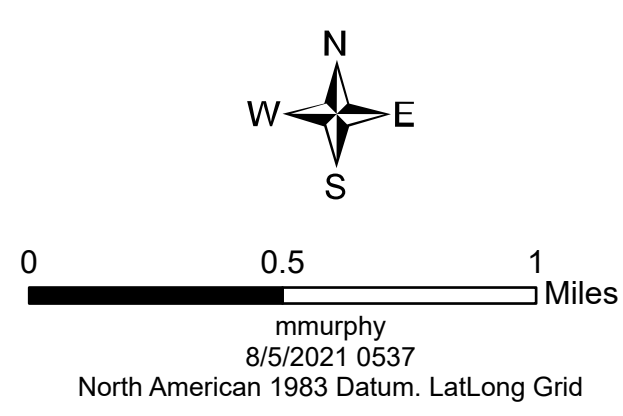


Ops Map

West Lolo Complex - Div C
 MT-LNF-000893
 8/5/21 Day
 18,334 acres at 8/4/21 @ 2037

- Check Point
- Unimproved Landing Area
- ⌘ Division Break
- Drop Point
- Staging Area
- Hot Spot - Spot Fire
- Repeater
- Water Source
- IR Isolated Heat Source
- Completed Burnout
- Completed Dozer Line
- Completed Fuel Break
- Completed Hand Line
- Completed Mixed Construction Line
- Completed Road as Line
- Access or Improved Road
- Incident Action Point
- Temporary Flight Restriction
- Fire Edge
- Repeater
- Contained Line
- IR Intense Heat
- IR Scattered Heat
- Wildfire Daily Fire Perimeter
- Fire History

Type	Label	Latitude	Longitude
Water Source	47° 41.117' N 115° 24.288' W	47° 41.117' N	115° 24.288' W
Water Development or Draft Site	47° 42.859' N 115° 22.925' W	47° 42.859' N	115° 22.925' W
Water Source	47° 44.839' N 115° 19.867' W	47° 44.839' N	115° 19.867' W
Water Source	47° 42.855' N 115° 22.925' W	47° 42.855' N	115° 22.925' W
Water Source	47° 43.390' N 115° 22.667' W	47° 43.390' N	115° 22.667' W
Water Source	47° 42.862' N 115° 22.930' W	47° 42.862' N	115° 22.930' W
Check Point	47° 43.061' N 115° 23.554' W	47° 43.061' N	115° 23.554' W
Drop Point	10 47° 41.239' N 115° 24.335' W	47° 41.239' N	115° 24.335' W
Drop Point	23 47° 42.141' N 115° 15.984' W	47° 42.141' N	115° 15.984' W
Drop Point	6 47° 46.028' N 115° 19.064' W	47° 46.028' N	115° 19.064' W
Drop Point	7 47° 44.361' N 115° 17.699' W	47° 44.361' N	115° 17.699' W
Drop Point	8 47° 43.248' N 115° 22.627' W	47° 43.248' N	115° 22.627' W
Unimproved Landing Area	U-3 47° 46.029' N 115° 19.064' W	47° 46.029' N	115° 19.064' W



47°50'N

47°50'N

47°45'N

47°45'N

47°40'N

47°40'N

115°20'W

115°15'W

47°50'N

47°45'N

47°40'N