

115°25'W

115°20'W

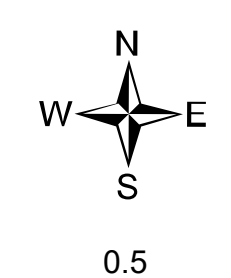


Ops Map
 West Lolo Complex - Div Z
 MT-LNF-000893
 8/5/21 Day
 18,334 acres at 8/4/21 @ 2037

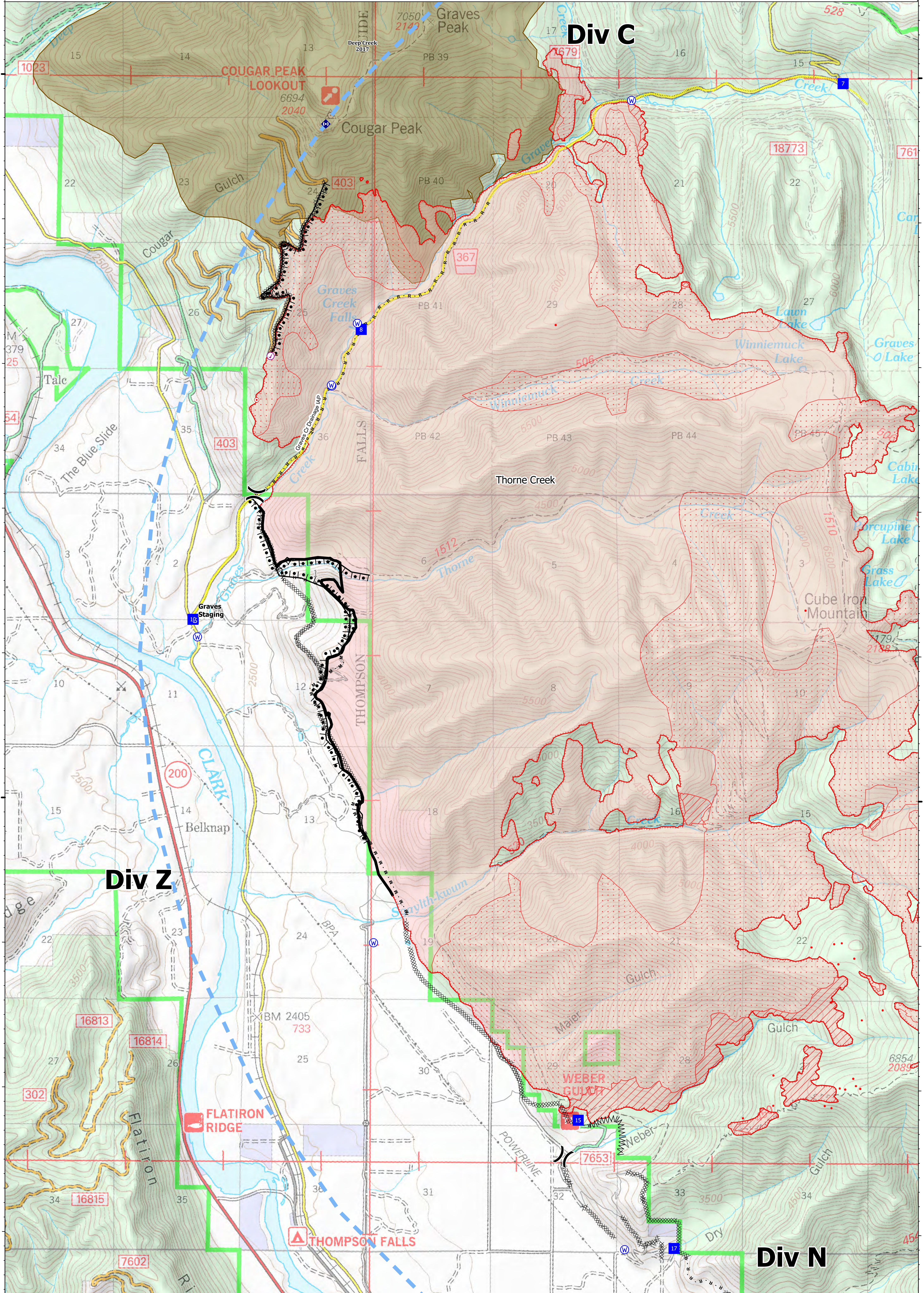
- Check Point
- Unimproved Landing Area
- Division Break
- Drop Point
- Staging Area
- Hot Spot - Spot Fire
- Gate
- Repeater
- Water Source
- IR Isolated Heat Source
- Completed Burnout
- Completed Dozer Line

- M Completed Fuel Break
- H Completed Hand Line
- M Completed Mixed Construction Line
- R Completed Road as Line
- Access or Improved Road
- Incident Action Point
- Temporary Flight Restriction
- Fire Edge
- Contained Line
- IR Intense Heat
- IR Scattered Heat
- Wildfire Daily Fire Perimeter
- Fire History

Type	Label	Latitude	Longitude
Water Source		47° 41.117' N	115° 24.298' W
Water Source		47° 42.859' N	115° 22.925' W
Water Source		47° 44.839' N	115° 19.867' W
Water Source		47° 42.859' N	115° 22.925' W
Water Source		47° 39.009' N	115° 22.471' W
Water Source		47° 36.895' N	115° 19.888' W
Water Source		47° 43.290' N	115° 22.667' W
Water Source		47° 42.862' N	115° 22.939' W
Check Point		47° 43.061' N	115° 23.554' W
Drop Point		10 47° 41.239' N	115° 24.335' W
Drop Point		15 47° 33.789' N	115° 20.369' W
Drop Point		17 47° 36.905' N	115° 19.383' W
Drop Point		6 47° 46.028' N	115° 19.064' W
Drop Point		7 47° 44.961' N	115° 17.699' W
Drop Point		8 47° 43.246' N	115° 22.627' W
Unimproved Landing Area		U-3 47° 46.029' N	115° 19.064' W



0 0.5 1 Miles
 mmurphy
 8/5/2021 0515
 North American 1983 Datum, Lat/Long Grid



115°25'W

115°20'W