

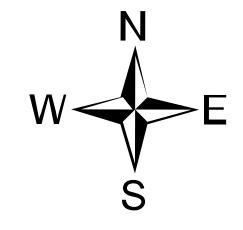
# Ops Map

West Lolo Complex - Thorne  
MT-LNF-000893  
8/5/21 Day  
18,334 acres at 8/4/21 @ 2037



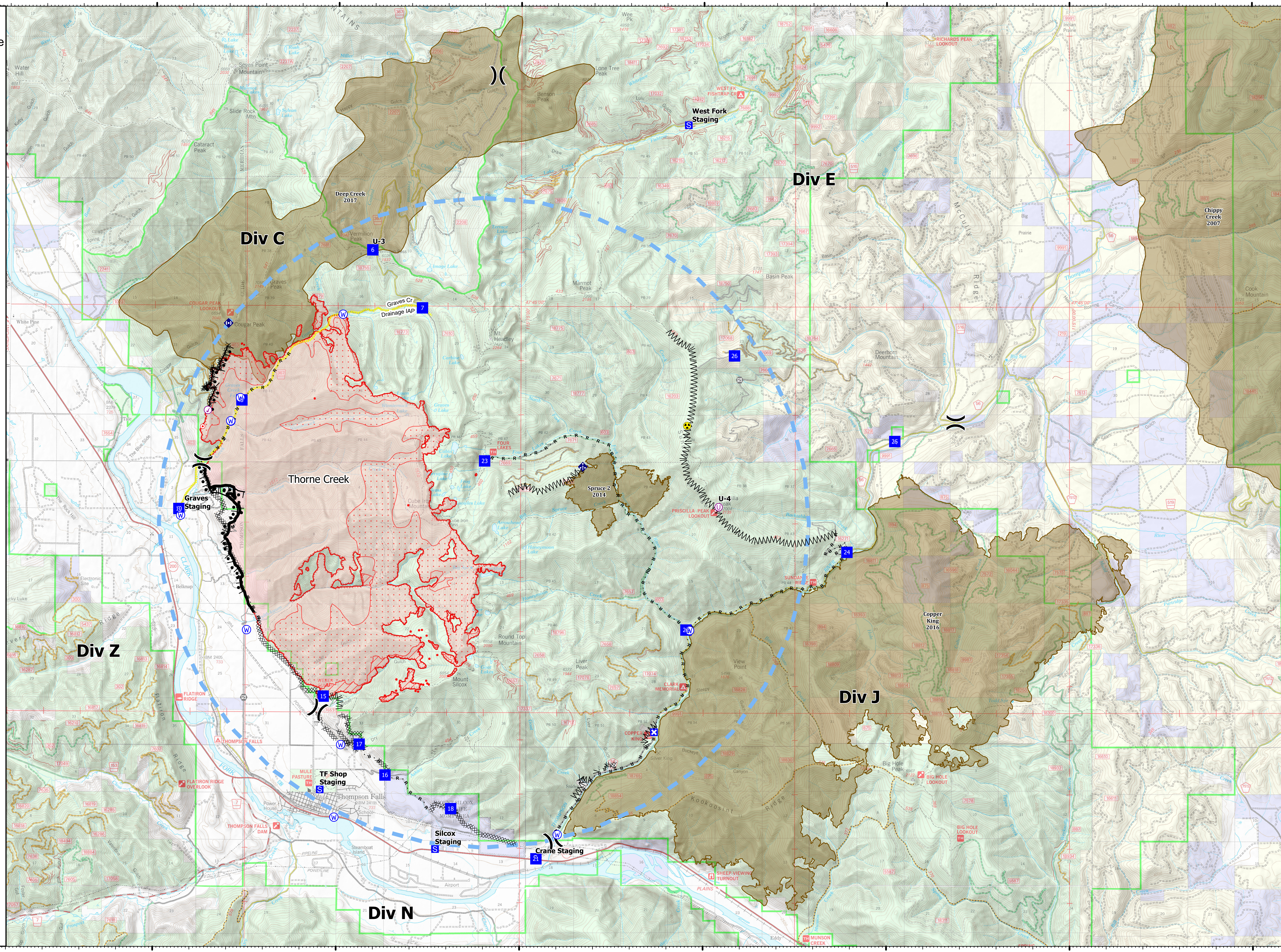
- Check Point
- Unimproved Landing Area
- ⌋ Division Break
- Drop Point
- ⊠ Closure
- ⊠ Staging Area
- Hot Spot - Spot Fire
- ⊠ Gate
- ⊠ Mobile Weather Unit
- ⊠ Repeater
- ⊠ Hazard
- ⊠ Water Source
- ⊠ IR Isolated Heat Source
- ⊠ Completed Burnout
- ⊠ Completed Dozer Line
- ⊠ Completed Fuel Break
- ⊠ Completed Hand Line
- ⊠ Completed Mixed Construction Line
- ⊠ Completed Road as Line
- Access or Improved Road
- ⊠ Incident Action Point
- ⊠ Temporary Flight Restriction
- Fire Edge
- Contained Line
- ⊠ IR Intense Heat
- ⊠ IR Scattered Heat
- ⊠ Wildfire Daily Fire Perimeter
- Fire History

Type	Label	Latitude	Longitude
Water Source	47° 41.117' N 115° 24.288' W	47° 41.117' N	115° 24.288' W
Water Development or Draft Site	47° 42.859' N 115° 22.925' W	47° 42.859' N	115° 22.925' W
Water Source	47° 44.839' N 115° 19.867' W	47° 44.839' N	115° 19.867' W
Water Source	47° 42.855' N 115° 22.925' W	47° 42.855' N	115° 22.925' W
Water Source	47° 35.247' N 115° 13.972' W	47° 35.247' N	115° 13.972' W
Water Source	47° 39.021' N 115° 20.373' W	47° 39.021' N	115° 20.373' W
Water Source	47° 35.556' N 115° 20.064' W	47° 35.556' N	115° 20.064' W
Water Source	47° 39.009' N 115° 22.471' W	47° 39.009' N	115° 22.471' W
Water Source	47° 36.895' N 115° 19.888' W	47° 36.895' N	115° 19.888' W
Water Source	47° 42.916' N 115° 10.449' W	47° 42.916' N	115° 10.449' W
Water Source	47° 43.200' N 115° 22.667' W	47° 43.200' N	115° 22.667' W
Water Source	47° 42.862' N 115° 22.930' W	47° 42.862' N	115° 22.930' W
Check Point	47° 43.061' N 115° 23.554' W	47° 43.061' N	115° 23.554' W
Drop Point	10 47° 41.239' N 115° 24.335' W	47° 41.239' N	115° 24.335' W
Drop Point	15 47° 37.789' N 115° 20.367' W	47° 37.789' N	115° 20.367' W
Drop Point	16 47° 36.338' N 115° 18.675' W	47° 36.338' N	115° 18.675' W
Drop Point	17 47° 36.905' N 115° 19.383' W	47° 36.905' N	115° 19.383' W
Drop Point	18 47° 35.722' N 115° 16.879' W	47° 35.722' N	115° 16.879' W
Drop Point	21 47° 34.801' N 115° 14.549' W	47° 34.801' N	115° 14.549' W
Drop Point	22 47° 39.030' N 115° 10.472' W	47° 39.030' N	115° 10.472' W
Drop Point	23 47° 42.141' N 115° 15.984' W	47° 42.141' N	115° 15.984' W
Drop Point	24 47° 40.469' N 115° 06.079' W	47° 40.469' N	115° 06.079' W
Drop Point	25 47° 42.515' N 115° 04.775' W	47° 42.515' N	115° 04.775' W
Drop Point	26 47° 44.091' N 115° 09.164' W	47° 44.091' N	115° 09.164' W
Drop Point	6 47° 46.028' N 115° 19.064' W	47° 46.028' N	115° 19.064' W
Drop Point	7 47° 44.961' N 115° 17.699' W	47° 44.961' N	115° 17.699' W
Drop Point	8 47° 43.248' N 115° 22.627' W	47° 43.248' N	115° 22.627' W
Unimproved Landing Area	U-3 47° 46.029' N 115° 19.064' W	47° 46.029' N	115° 19.064' W
Unimproved Landing Area	U-4 47° 41.298' N 115° 09.587' W	47° 41.298' N	115° 09.587' W



0 1 2 Miles

mmurphy  
8/5/2021 0459  
North American 1983 Datum, Lat/Long Grid



47°50'N  
47°45'N  
47°40'N  
47°35'N

115°30'W  
115°25'W  
115°20'W  
115°15'W  
115°10'W  
115°5'W  
115°W  
114°55'W