

115°15'W

115°10'W

115°5'W

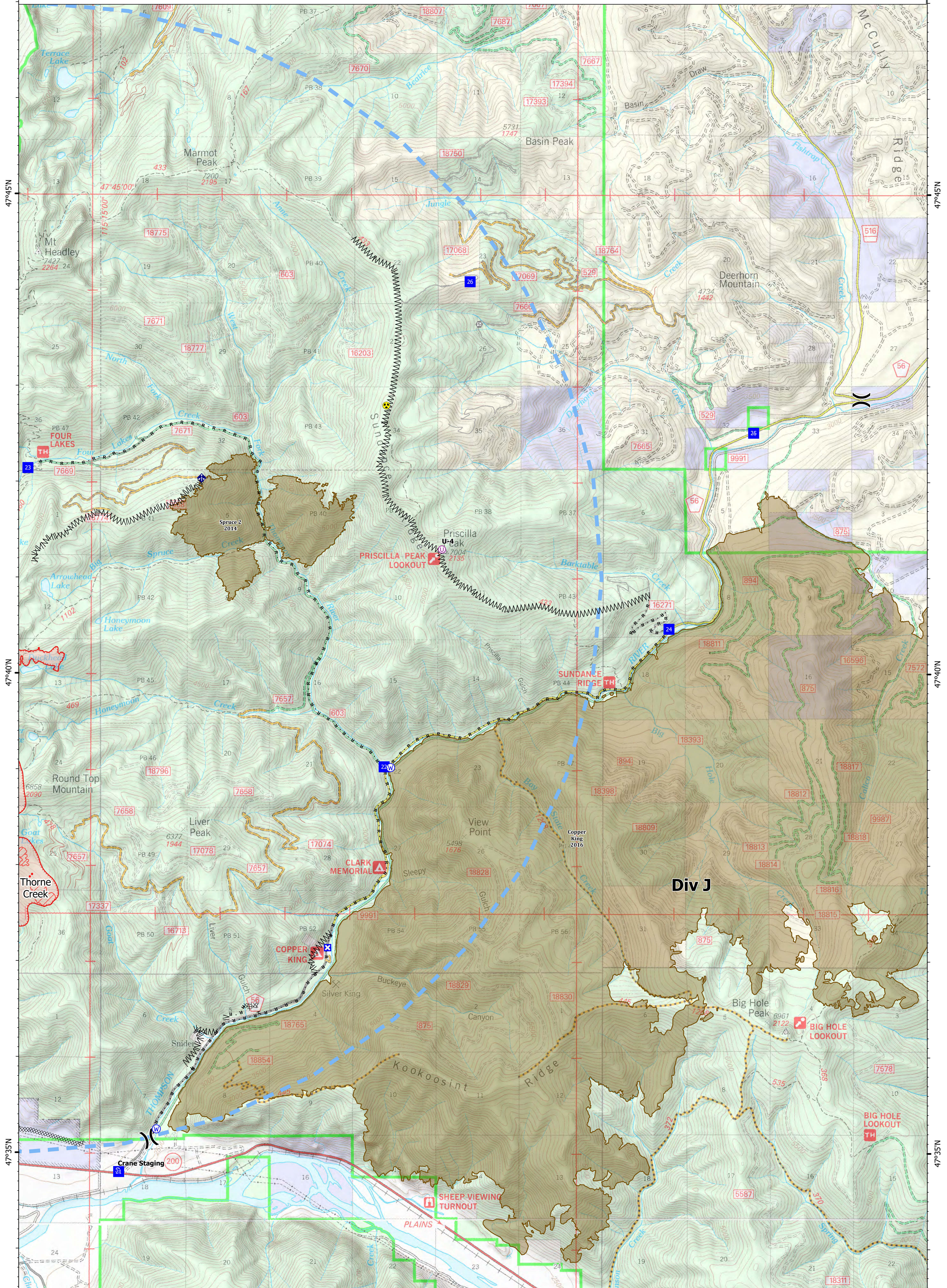
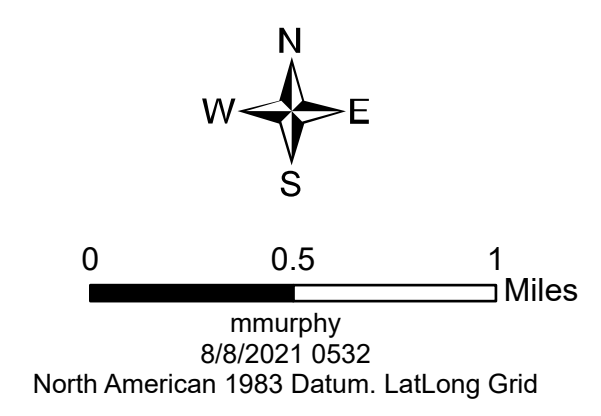


Ops Map

West Lolo Complex - Div J
 MT-LNF-000893
 8/8/2021 Day
 21,967 acres at 8/7/21 @ 2203

- Unimproved Landing Area
- X Division Break
- Drop Point
- Closure
- Staging Area
- Gate
- ◆ Mobile Weather Unit
- ★ Hazard
- Water Source
- IR Isolated Heat Source
- X Completed Dozer Line
- M Completed Fuel Break
- H Completed Hand Line
- R Completed Road as Line
- Access or Improved Road
- Temporary Flight Restriction
- Fire Edge
- IR Intense Heat
- Wildfire Daily Fire Perimeter
- Fire History

Type	Label	Latitude	Longitude
Water Source		47° 35.247' N 115° 13.972' W	
Water Source		47° 39.021' N 115° 10.373' W	
Hazard		47° 42.798' N 115° 10.449' W	
Drop Point	21	47° 34.801' N 115° 14.549' W	
Drop Point	22	47° 39.030' N 115° 10.472' W	
Drop Point	23	47° 42.141' N 115° 15.984' W	
Drop Point	24	47° 40.469' N 115° 06.079' W	
Drop Point	25	47° 42.515' N 115° 04.775' W	
Drop Point	26	47° 44.091' N 115° 09.160' W	
Unimproved Landing Area	U-4	47° 41.298' N 115° 09.587' W	



115°15'W

115°10'W

115°5'W

47°45'N

47°45'N

47°40'N

47°40'N

47°35'N

47°35'N

Div J