

# Ops Map

West Lolo Complex - Thorne  
 MT-LNF-000893  
 8/8/2021 Day  
 21,967 acres at 8/7/21 @ 2203

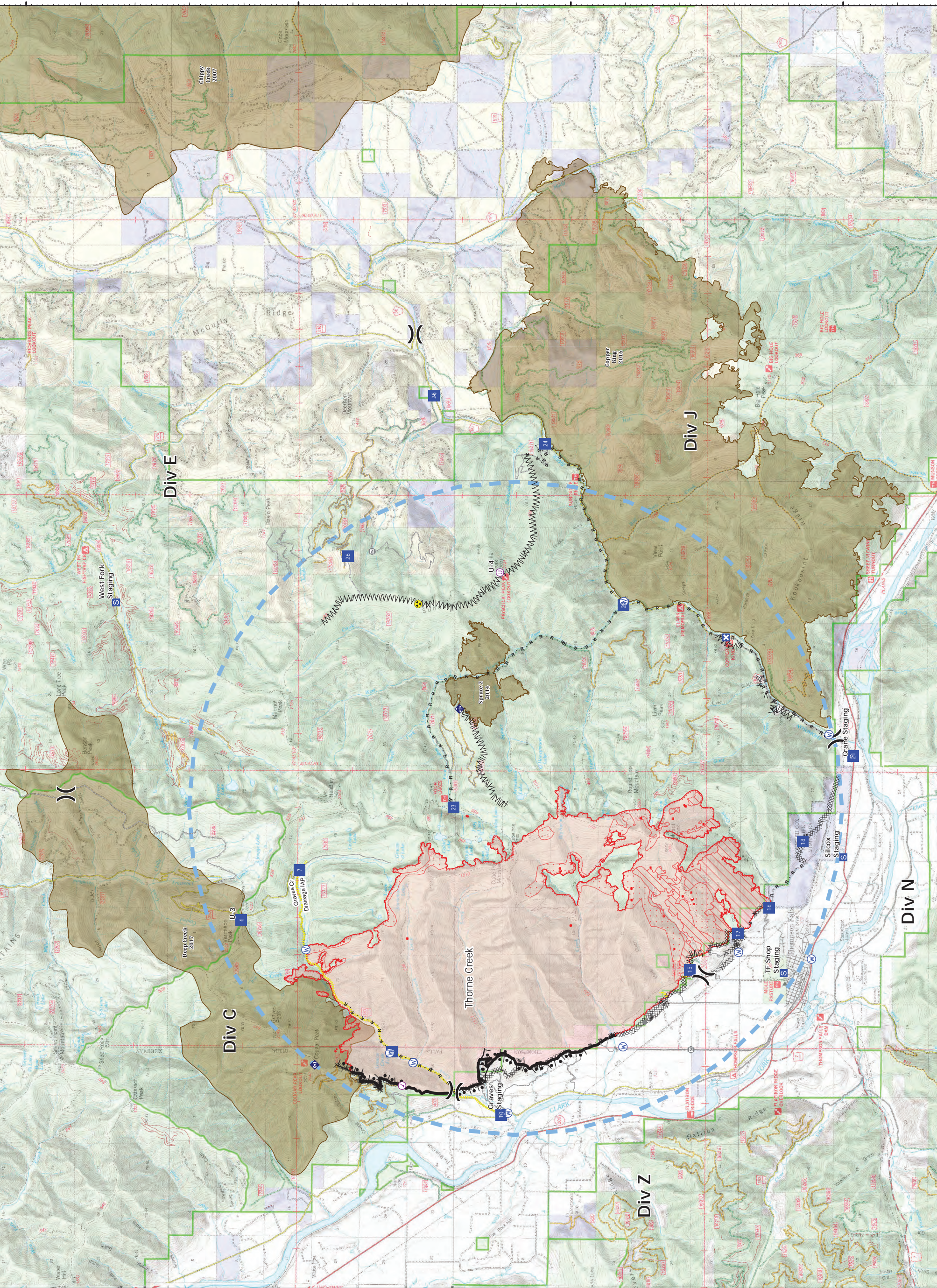


- Check Point
- Unimproved Landing Area
- Y Division Break
- Staging Area
- Gate
- Mobile Weather Unit
- Repeater
- Hazard
- Water Source
- IR Isolated Heat Source
- Completed Burnout
- Completed Doser Line
- Completed Fuel Break
- Completed Hand Line
- Completed Mixed Construction Line
- Access or Improved Road
- Incident Action Point
- Temporary Flight Restriction
- Fire Edge
- Contained Line
- IR Intense Heat
- IR Scattered Heat
- Wildlife Daily Fire Perimeter
- Fire History

Type	Label	Latitude	Longitude
Water Development or Dam Site	U-4	47° 42' 25.9" N	115° 22' 02.5" W
Water Source	U-3	47° 44' 49.9" N	115° 19' 48.7" W
Water Source	U-2	47° 42' 45.5" N	115° 22' 02.5" W
Water Source	U-1	47° 39' 20.1" N	115° 10' 27.7" W
Water Source	U-3	47° 35' 55.6" N	115° 20' 08.4" W
Water Source	U-2	47° 39' 20.9" N	115° 22' 47.1" W
Water Source	U-1	47° 42' 29.8" N	115° 10' 48.9" W
Water Source	U-3	47° 42' 26.2" N	115° 22' 02.5" W
Water Source	U-2	47° 42' 26.2" N	115° 22' 02.5" W
Drop Point	U-4	47° 41' 29.9" N	115° 24' 13.5" W
Drop Point	U-3	47° 37' 37.9" N	115° 20' 36.9" W
Drop Point	U-2	47° 36' 32.8" N	115° 19' 47.5" W
Drop Point	U-1	47° 35' 32.2" N	115° 14' 49.5" W
Drop Point	U-3	47° 34' 34.0" N	115° 10' 47.2" W
Drop Point	U-2	47° 42' 41.1" N	115° 19' 08.2" W
Drop Point	U-1	47° 42' 51.5" N	115° 04' 17.5" W
Drop Point	U-3	47° 44' 49.1" N	115° 09' 16.0" W
Drop Point	U-2	47° 46' 42.8" N	115° 19' 08.4" W
Drop Point	U-1	47° 43' 24.8" N	115° 22' 42.7" W
Unimproved Landing Area	U-3	47° 46' 42.8" N	115° 19' 08.4" W
Unimproved Landing Area	U-4	47° 41' 29.8" N	115° 19' 08.7" W



8862021 0518  
 North American 1983 Datum, Lat/Long Grid



47° 50' N 47° 45' N 47° 40' N 47° 35' N

115° 30' W 115° 25' W 115° 20' W 115° 15' W 115° 10' W 115° 5' W 114° 55' W