

115°15'W

115°10'W

115°5'W

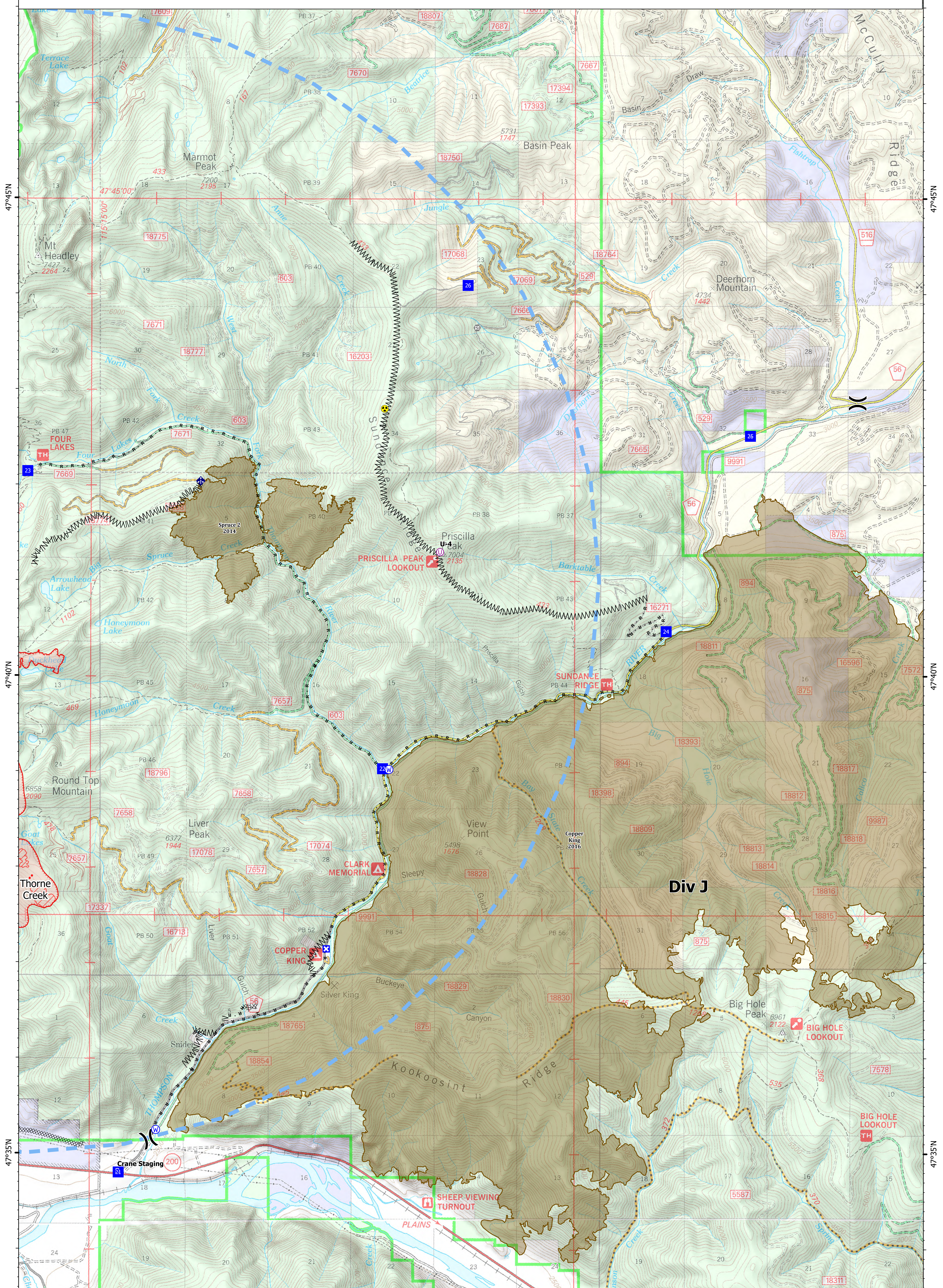
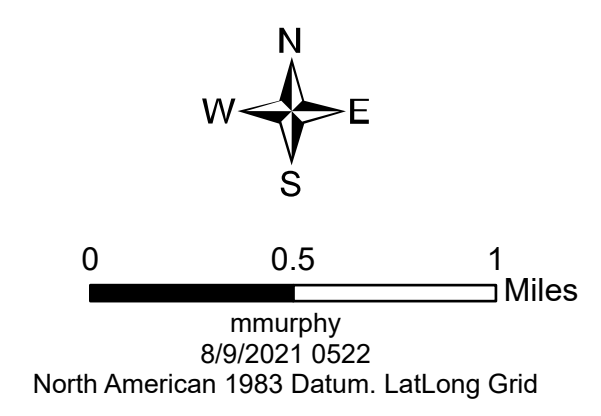


Ops Map

West Lolo Complex - Div J
 MT-LNF-000893
 8/9/2021 Day
 21,967 acres at 8/7/21 @ 2203

- Unimproved Landing Area
- ⊗ Division Break
- ⊠ Drop Point
- ⊡ Closure
- ⊞ Staging Area
- ⊕ Gate
- ⊙ Mobile Weather Unit
- ⚡ Hazard
- ⊙ Water Source
- IR Isolated Heat Source
- ⊗ Completed Dozer Line
- ⊞ Completed Fuel Break
- ⊞ Completed Hand Line
- ⊞ Completed Road as Line
- Access or Improved Road
- - - Temporary Flight Restriction
- Fire Edge
- - - IR Intense Heat
- - - Wildfire Daily Fire Perimeter
- Fire History

| Type | Label | Latitude | Longitude |
|-------------------------|-------|------------------------------|-----------|
| Water Source | | 47° 35.247' N 115° 13.972' W | |
| Water Source | | 47° 39.021' N 115° 10.373' W | |
| Hazard | | 47° 42.798' N 115° 10.449' W | |
| Drop Point | 21 | 47° 34.801' N 115° 14.549' W | |
| Drop Point | 22 | 47° 39.030' N 115° 10.472' W | |
| Drop Point | 23 | 47° 42.141' N 115° 15.984' W | |
| Drop Point | 24 | 47° 40.469' N 115° 06.079' W | |
| Drop Point | 25 | 47° 42.515' N 115° 04.775' W | |
| Drop Point | 26 | 47° 44.091' N 115° 09.160' W | |
| Unimproved Landing Area | U-4 | 47° 41.298' N 115° 09.587' W | |



115°15'W

115°10'W

115°5'W

47°45'N

47°45'N

47°40'N

47°40'N

47°35'N

47°35'N