

115°25'W

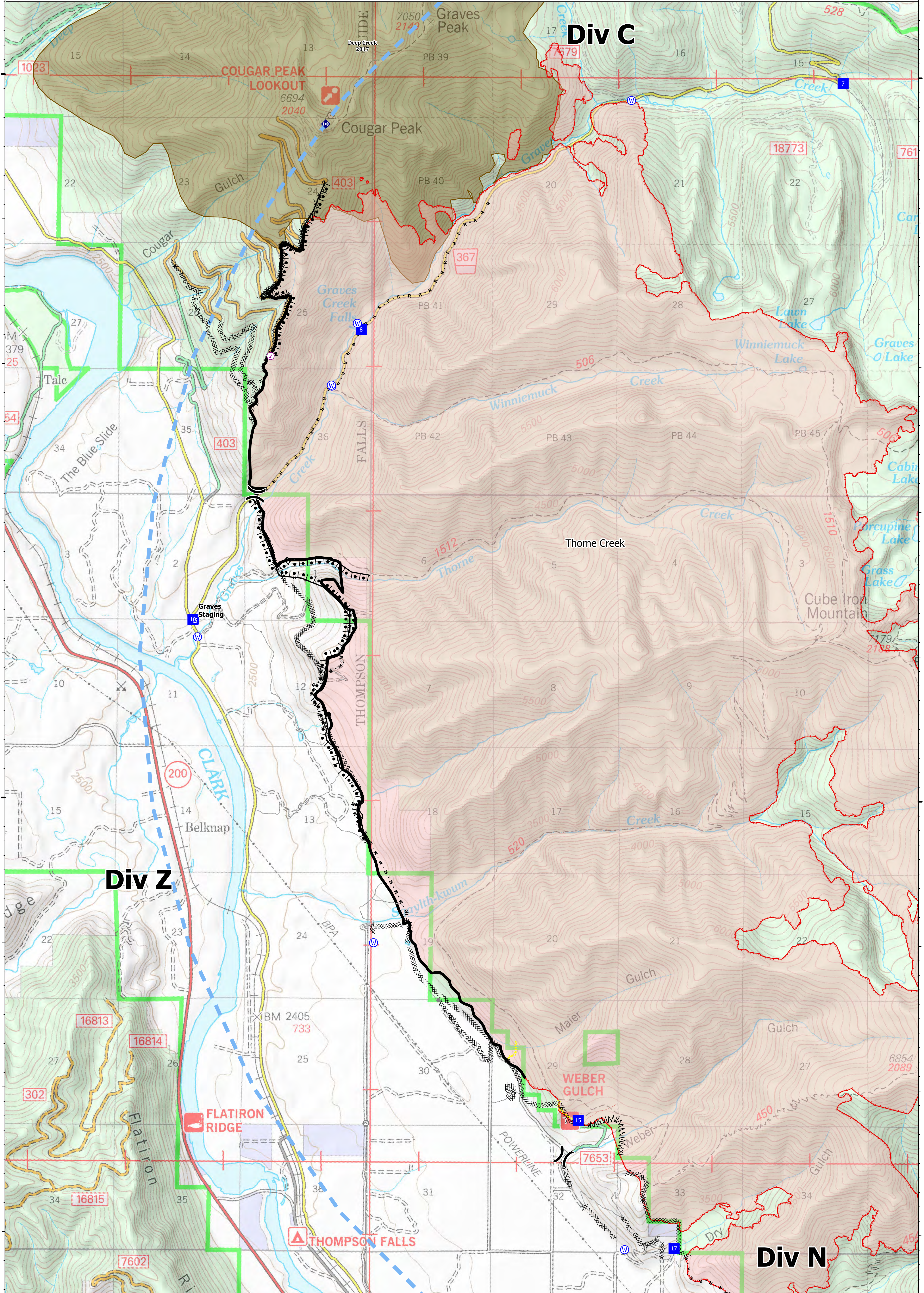
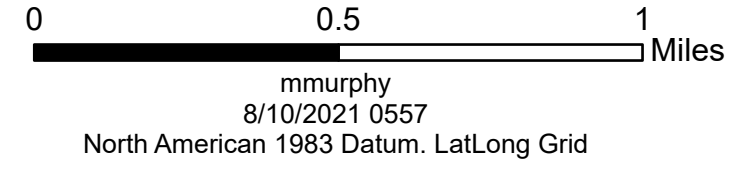
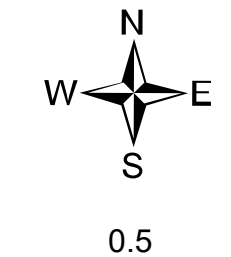
115°20'W



Ops Map
 West Lolo Complex - Div Z
 MT-LNF-000893
 8/10/2021 Day
 21,967 acres at 8/7/21 @ 2203

- Check Point
- Unimproved Landing Area
- Division Break
- Drop Point
- Staging Area
- Other
- Gate
- Repeater
- Water Source
- Completed Burnout
- ×× Completed Dozer Line
- M Completed Fuel Break
- H Completed Hand Line
- M Completed Mixed Construction Line
- R Completed Road as Line
- Access or Improved Road
- Incident Action Point
- Temporary Flight Restriction
- Fire Edge
- Contained Line
- Wildfire Daily Fire Perimeter
- Fire History

Type	Label	Latitude	Longitude
Water Source	47° 41.117' N 115° 24.208' W	47° 41.117' N	115° 24.208' W
Water Source	47° 44.839' N 115° 19.867' W	47° 44.839' N	115° 19.867' W
Water Source	47° 42.855' N 115° 22.925' W	47° 42.855' N	115° 22.925' W
Water Source	47° 39.009' N 115° 22.471' W	47° 39.009' N	115° 22.471' W
Water Source	47° 36.895' N 115° 19.888' W	47° 36.895' N	115° 19.888' W
Water Source	47° 43.290' N 115° 22.667' W	47° 43.290' N	115° 22.667' W
Water Source	47° 42.862' N 115° 22.930' W	47° 42.862' N	115° 22.930' W
Check Point	47° 43.061' N 115° 23.554' W	47° 43.061' N	115° 23.554' W
Drop Point	10 47° 41.239' N 115° 24.335' W	47° 41.239' N	115° 24.335' W
Drop Point	15 47° 37.789' N 115° 20.308' W	47° 37.789' N	115° 20.308' W
Drop Point	17 47° 36.905' N 115° 19.383' W	47° 36.905' N	115° 19.383' W
Drop Point	6 47° 46.028' N 115° 19.064' W	47° 46.028' N	115° 19.064' W
Drop Point	7 47° 44.961' N 115° 17.699' W	47° 44.961' N	115° 17.699' W
Drop Point	8 47° 43.246' N 115° 22.637' W	47° 43.246' N	115° 22.637' W
Unimproved Landing Area	U-3 47° 46.029' N 115° 19.064' W	47° 46.029' N	115° 19.064' W



115°25'W

115°20'W

47°45'N

47°45'N

47°40'N

47°40'N