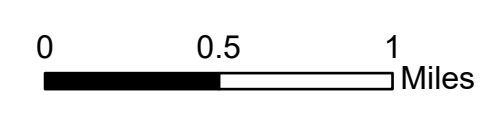
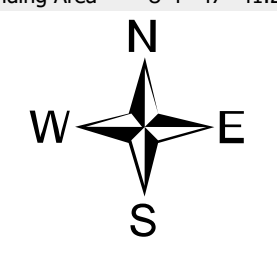


Ops Map
 West Lolo Complex - Div E
 MT-LNF-000893
 8/11/2021 Day
 22,739 acres at 8/10/21 @ 2259

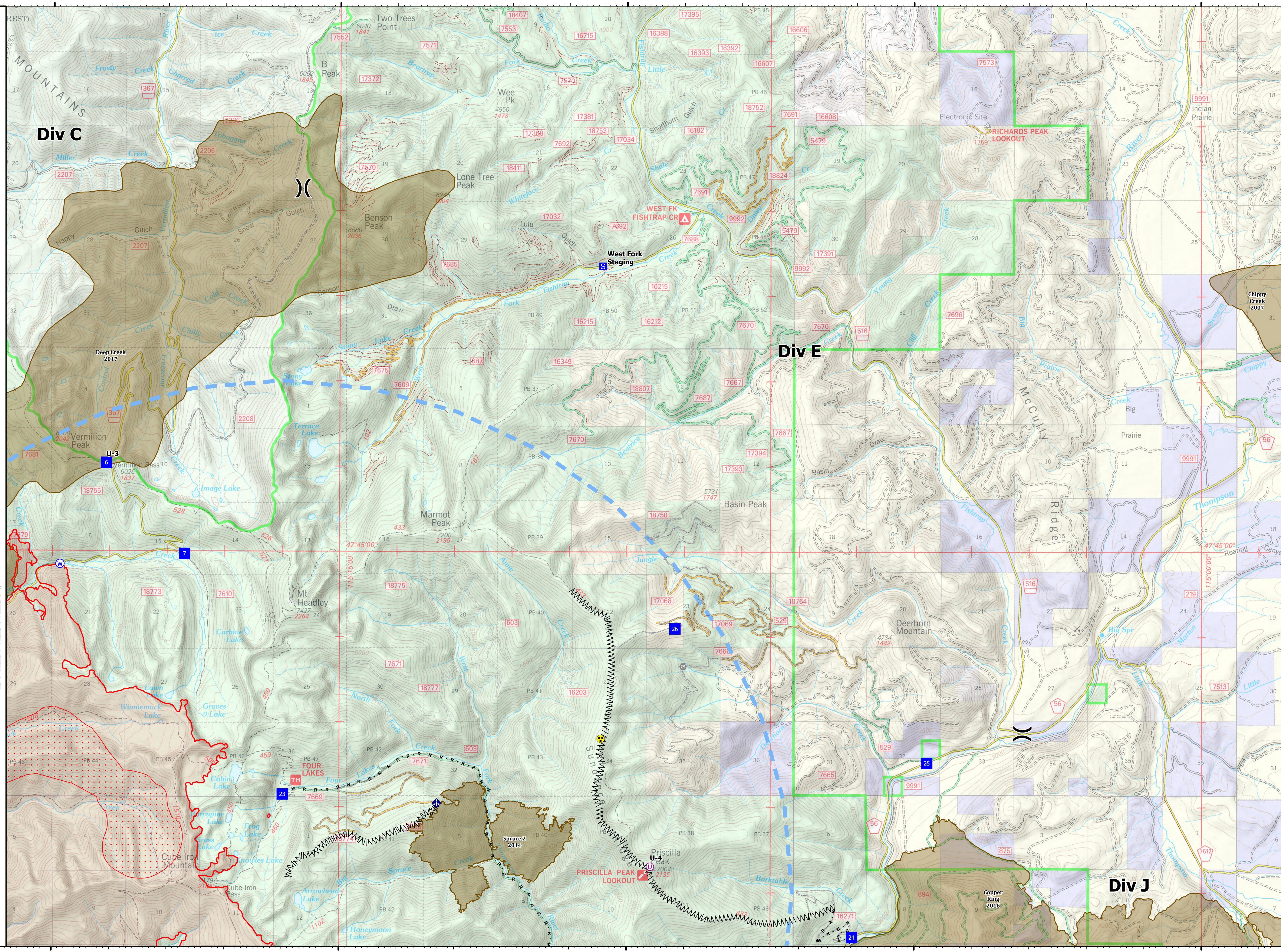


- ⊙ Check Point
- ⊙ Unimproved Landing Area
- ⌋ Division Break
- ⊠ Drop Point
- ⊠ Closure
- ⊠ Staging Area
- ⊠ Gate
- ⊠ Mobile Weather Unit
- ⊠ Repeater
- ⊠ Hazard
- ⊠ Water Source
- ⊠ Completed Burnout
- ⊠ Completed Dozer Line
- ⊠ Completed Fuel Break
- ⊠ Completed Hand Line
- ⊠ Completed Mixed Construction Line
- ⊠ Completed Road as Line
- ⊠ Access or Improved Road
- ⊠ Temporary Flight Restriction
- ⊠ Contained Line
- ⊠ Fire History
- ⊠ IR ScatteredHeat
- ⊠ IR IntenseHeat
- ⊠ IR Point

Type	Label	Latitude	Longitude
Water Development or Draft Site		47° 42.859' N 115° 22.925' W	
Water Source		47° 44.839' N 115° 19.867' W	
Water Source		47° 42.855' N 115° 22.925' W	
Hazard		47° 42.798' N 115° 10.449' W	
Water Source		47° 43.290' N 115° 22.667' W	
Water Source		47° 42.862' N 115° 22.930' W	
Drop Point	23	47° 42.141' N 115° 15.984' W	
Drop Point	24	47° 40.469' N 115° 06.079' W	
Drop Point	25	47° 42.515' N 115° 04.775' W	
Drop Point	26	47° 44.091' N 115° 09.160' W	
Drop Point	6	47° 46.028' N 115° 19.064' W	
Drop Point	7	47° 44.961' N 115° 17.699' W	
Drop Point	8	47° 43.248' N 115° 22.627' W	
Unimproved Landing Area	U-3	47° 46.029' N 115° 19.064' W	
Unimproved Landing Area	U-4	47° 41.298' N 115° 09.587' W	



mmurphy
 8/11/2021 0624
 North American 1983 Datum, Lat/Long Grid



115°20'W 115°15'W 115°10'W 115°5'W 115°W

47°50'N

47°50'N

47°45'N

47°45'N

115°20'W

115°15'W

115°10'W

115°5'W

115°W