



# Ops Map

West Lolo Complex - Div J  
 MT-LNF-000893  
 8/11/2021 Day  
 22,739 acres at 8/10/21 @ 2259

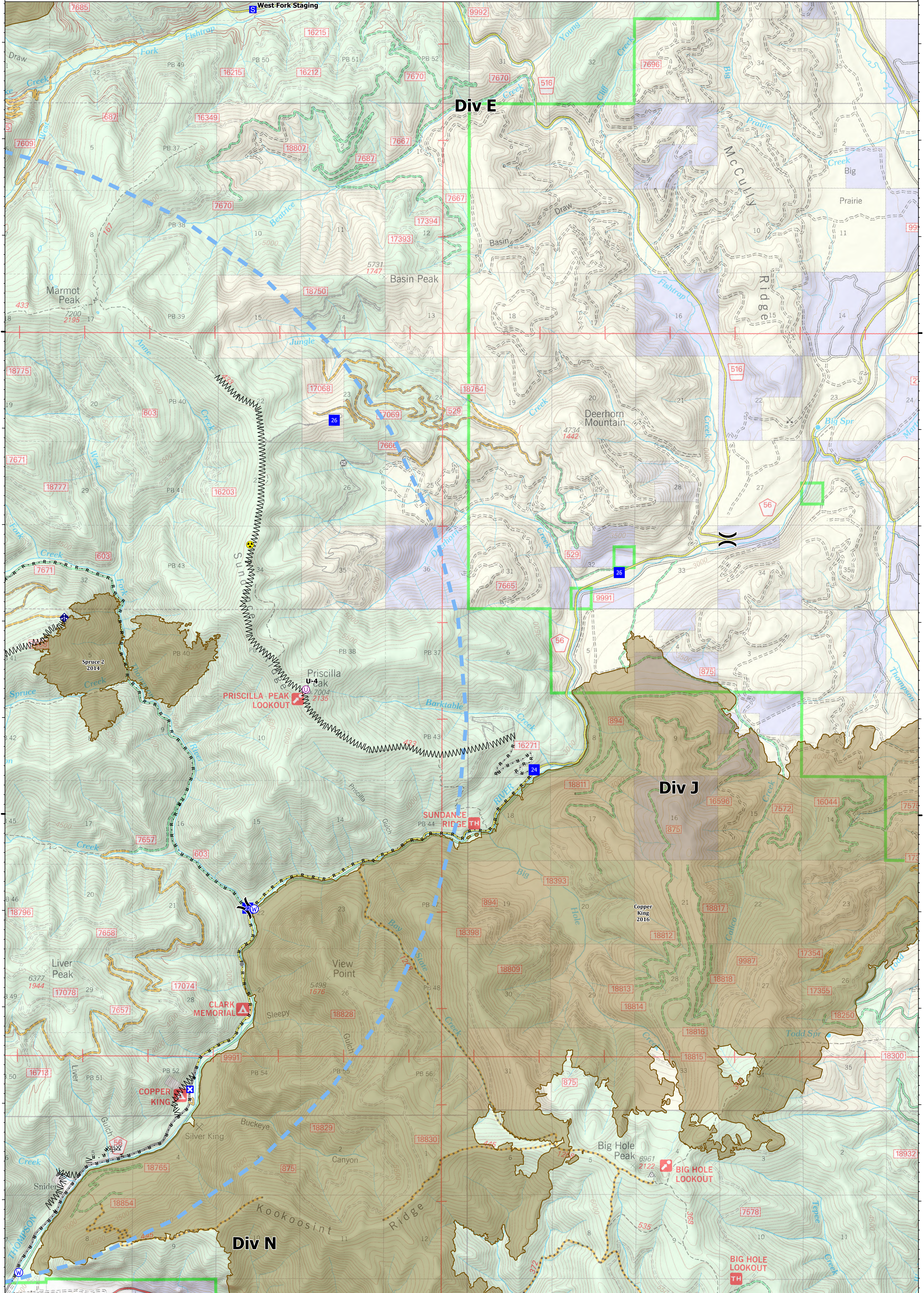
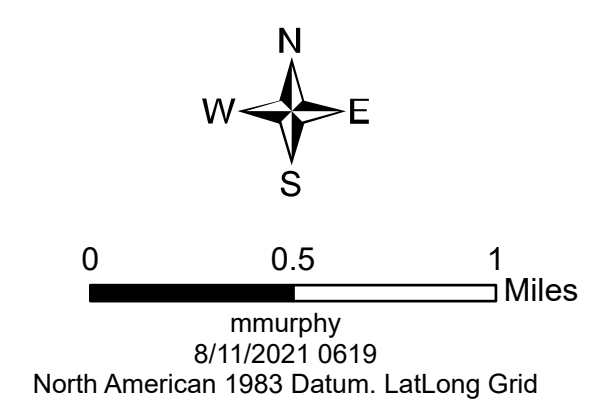
115°10'W

115°5'W

- Unimproved Landing Area
- ⌘ Division Break
- Drop Point
- ⊠ Closure
- Staging Area
- Other
- ⊙ Gate
- ◆ Mobile Weather Unit
- Hazard
- Water Source
- ⊗ Completed Dozer Line
- ⊗ Completed Fuel Break
- H - Completed Hand Line
- R - Completed Road as Line

- Access or Improved Road
- Temporary Flight Restriction
- Fire History
- IR ScatterHeat
- IR IntenseHeat
- IR Point

Type	Label	Latitude	Longitude
Water Source		47° 35.247' N 115° 13.972' W	
Water Source		47° 39.021' N 115° 10.373' W	
Hazard		47° 42.798' N 115° 10.449' W	
Drop Point	22	47° 39.030' N 115° 10.472' W	
Drop Point	24	47° 40.469' N 115° 06.079' W	
Drop Point	25	47° 42.515' N 115° 04.775' W	
Drop Point	26	47° 44.091' N 115° 09.160' W	
Unimproved Landing Area	U-4	47° 41.298' N 115° 09.587' W	



115°10'W

115°5'W