

115°25'W

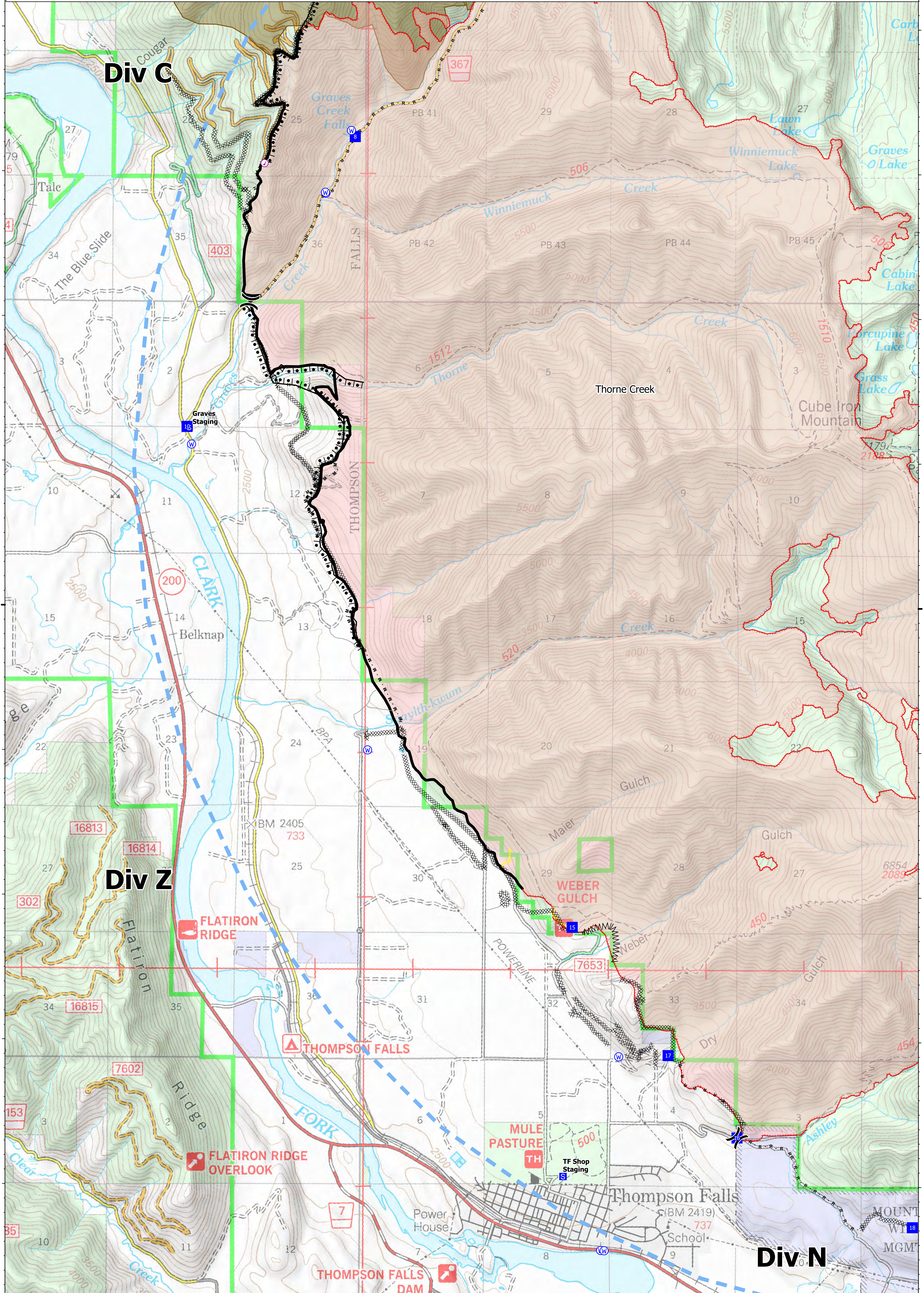
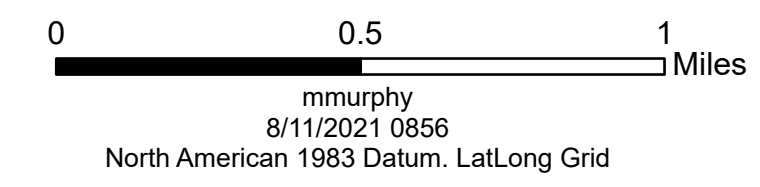
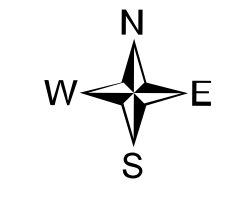
115°20'W



Ops Map
 West Lolo Complex - Div Z
 MT-LNF-000893
 8/11/2021 Day
 22,739 acres at 8/10/21 @ 2259

- Check Point
- ⌋ Division Break
- Drop Point
- ⊞ Staging Area
- Other
- ⊙ Gate
- ⬇ Repeater
- ⊕ Water Source
- ⊞ Completed Burnout
- ⊞ Completed Dozer Line
- ⊞ Completed Fuel Break
- H - Completed Hand Line
- M - Completed Mixed Construction Line
- R - Completed Road as Line
- Access or Improved Road
- ⚡ Incident Action Point
- Temporary Flight Restriction
- Fire Edge
- Contained Line
- Wildfire Daily Fire Perimeter
- Fire History

Type	Label	Latitude	Longitude	
Water Source		47° 41.117' N	115° 24.288' W	
Water Source		47° 42.859' N	115° 22.925' W	
Water Source		47° 44.839' N	115° 19.867' W	
Water Source		47° 42.859' N	115° 22.925' W	
Water Source		47° 35.556' N	115° 20.064' W	
Water Source		47° 39.059' N	115° 22.471' W	
Water Source		47° 36.489' N	115° 19.888' W	
Water Source		47° 43.280' N	115° 22.667' W	
Water Source		47° 42.862' N	115° 22.930' W	
Check Point		47° 43.061' N	115° 23.514' W	
Water Source		47° 35.554' N	115° 20.029' W	
Drop Point		10	47° 41.229' N	115° 24.339' W
Drop Point		15	47° 37.789' N	115° 20.369' W
Drop Point		16	47° 36.338' N	115° 18.675' W
Drop Point		17	47° 36.965' N	115° 19.383' W
Drop Point		18	47° 35.722' N	115° 16.879' W
Drop Point		8	47° 43.248' N	115° 22.627' W



115°25'W

115°20'W

47°40'N

47°40'N