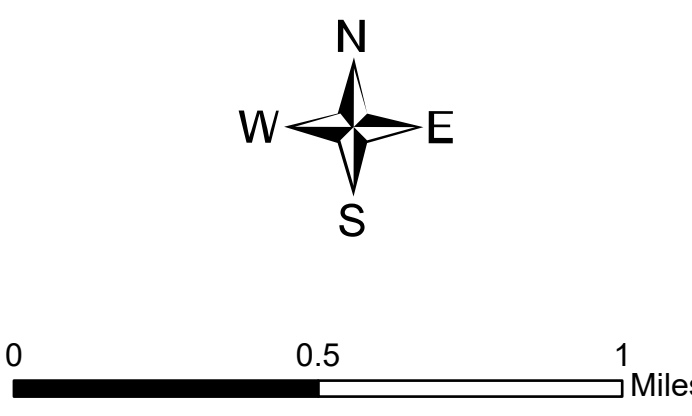


**Ops Map**  
 West Lolo Complex - Div N  
 MT-LNF-000893  
 8/12/2021 Day  
 23,010 acres at 8/12/21 @ 0020

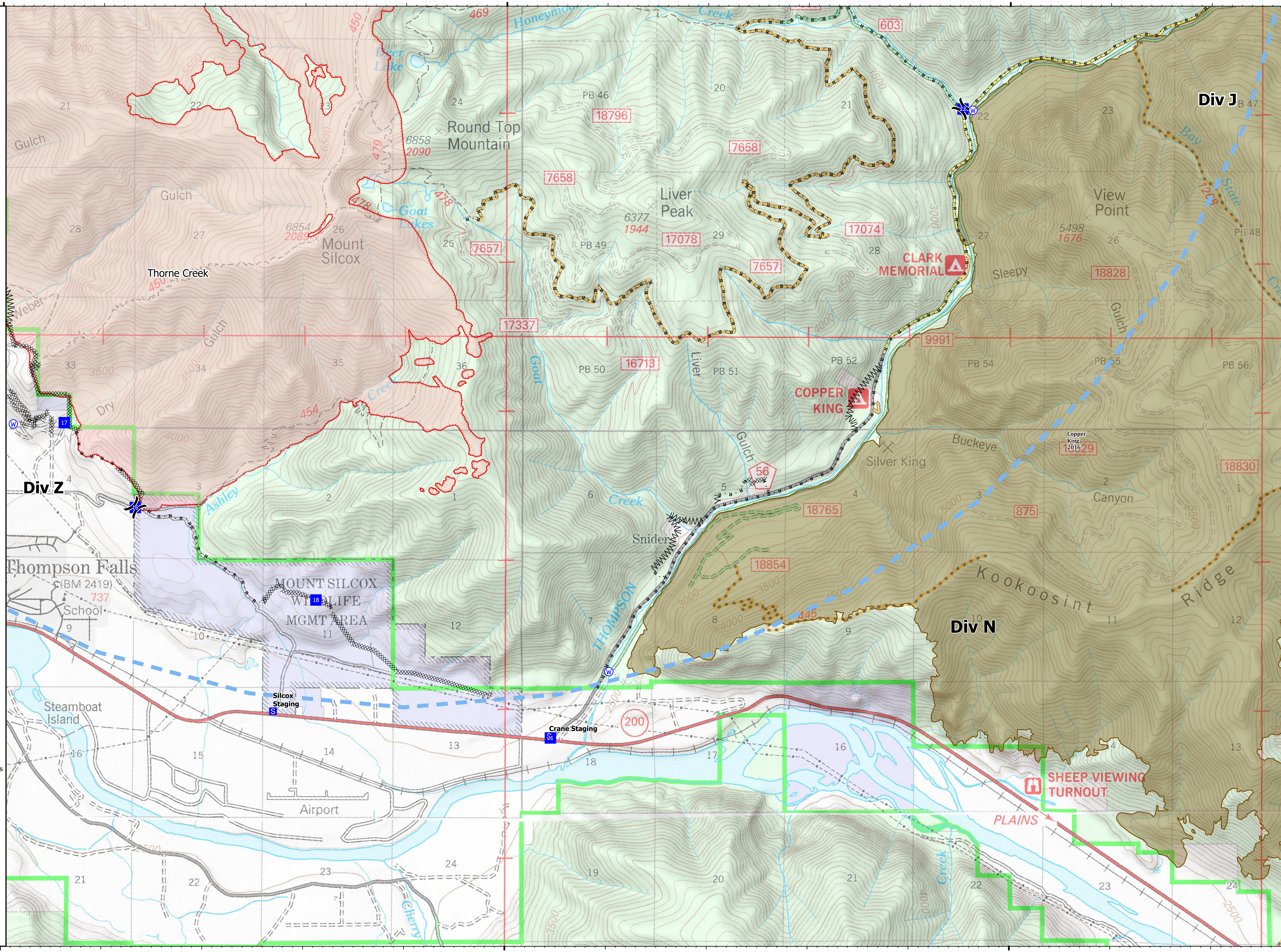


- ( ) Division Break
- Drop Point
- Staging Area
- ⊙ Water Source
- Completed Dozer Line
- Completed Fuel Break
- Completed Hand Line
- Completed Road as Line
- Access or Improved Road
- Incident Action Point
- Temporary Flight Restriction
- Fire Edge
- Contained Line
- Wildfire Daily Fire Perimeter
- Fire History

Type	Label	Latitude	Longitude
Water Source		47° 35.247' N 115° 13.972' W	
Water Source		47° 39.021' N 115° 10.373' W	
Water Source		47° 35.556' N 115° 20.064' W	
Water Source		47° 36.895' N 115° 19.888' W	
Water Source		47° 35.554' N 115° 20.029' W	
Drop Point	15	47° 37.789' N 115° 20.369' W	
Drop Point	16	47° 36.338' N 115° 18.675' W	
Drop Point	17	47° 36.905' N 115° 19.383' W	
Drop Point	18	47° 35.722' N 115° 16.879' W	
Drop Point	21	47° 34.801' N 115° 14.549' W	
Drop Point	22	47° 39.030' N 115° 10.472' W	



mmurphy  
 8/12/2021 0359  
 North American 1983 Datum, LatLong Grid



115°20'W

115°15'W

115°10'W

47°35'N

47°35'N