

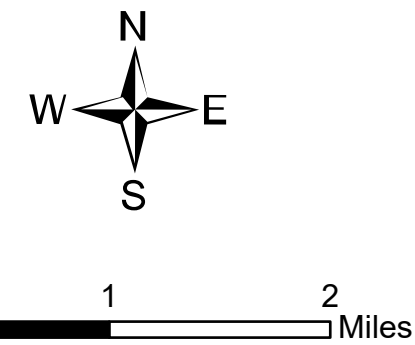
Ops Map

West Lolo Complex - Thorne
MT-LNF-000893
8/12/2021 Day
23,010 acres at 8/12/21 @ 0020

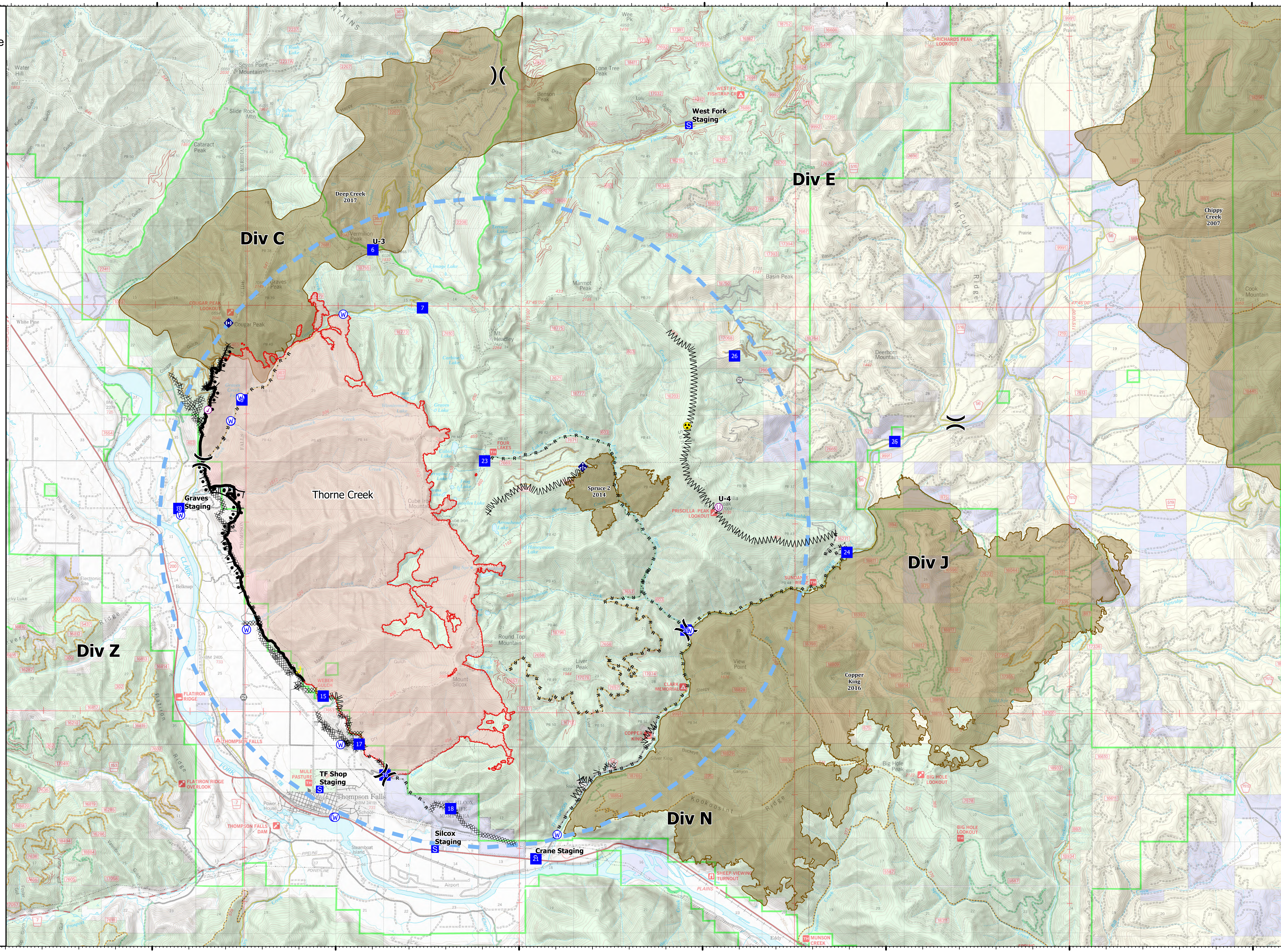


- Check Point
- Unimproved Landing Area
- ⌘ Division Break
- Drop Point
- Closure
- Staging Area
- Other
- Gate
- Mobile Weather Unit
- Repeater
- Hazard
- Water Source
- ⊗ Completed Burnout
- ⊗ Completed Dozer Line
- ⊗ Completed Fuel Break
- ⊗ Completed Hand Line
- ⊗ Completed Mixed Construction Line
- ⊗ Completed Road as Line
- ⊗ Access or Improved Road
- ⊗ Incident Action Point
- ⊗ Temporary Flight Restriction
- Fire Edge
- Contained Line
- Wildfire Daily Fire Perimeter
- Fire History

Type	Label	Latitude	Longitude
Water Source		47° 41.117' N 115° 24.286' W	
Water Development of Draft Site		47° 42.859' N 115° 22.925' W	
Water Source		47° 44.839' N 115° 19.867' W	
Water Source		47° 42.855' N 115° 22.925' W	
Water Source		47° 35.287' N 115° 13.972' W	
Water Source		47° 39.021' N 115° 10.373' W	
Water Source		47° 35.556' N 115° 20.064' W	
Water Source		47° 39.009' N 115° 22.471' W	
Water Source		47° 36.898' N 115° 19.888' W	
Hazard		47° 42.798' N 115° 10.449' W	
Water Source		47° 43.290' N 115° 22.667' W	
Water Source		47° 42.862' N 115° 22.930' W	
Check Point		47° 38.032' N 115° 23.554' W	
Water Source		47° 35.554' N 115° 20.029' W	
Drop Point	10	47° 41.239' N 115° 24.335' W	
Drop Point	15	47° 37.789' N 115° 20.369' W	
Drop Point	16	47° 36.398' N 115° 18.675' W	
Drop Point	17	47° 36.905' N 115° 19.383' W	
Drop Point	18	47° 35.722' N 115° 16.879' W	
Drop Point	21	47° 34.801' N 115° 14.549' W	
Drop Point	22	47° 39.030' N 115° 19.160' W	
Drop Point	23	47° 42.141' N 115° 15.964' W	
Drop Point	24	47° 40.469' N 115° 06.079' W	
Drop Point	25	47° 42.515' N 115° 04.775' W	
Drop Point	26	47° 44.098' N 115° 09.160' W	
Drop Point	6	47° 46.028' N 115° 19.064' W	
Drop Point	7	47° 44.961' N 115° 17.699' W	
Drop Point	8	47° 43.248' N 115° 22.627' W	
Unimproved Landing Area	U-3	47° 46.030' N 115° 19.064' W	
Unimproved Landing Area	U-4	47° 41.238' N 115° 09.987' W	



mmurphy
8/12/2021 0351
North American 1983 Datum, Lat/Long Grid



47°50'N

47°45'N

47°40'N

47°35'N

47°50'N

47°45'N

47°40'N

47°35'N

115°30'W

115°25'W

115°20'W

115°15'W

115°10'W

115°5'W

115°W

114°55'W