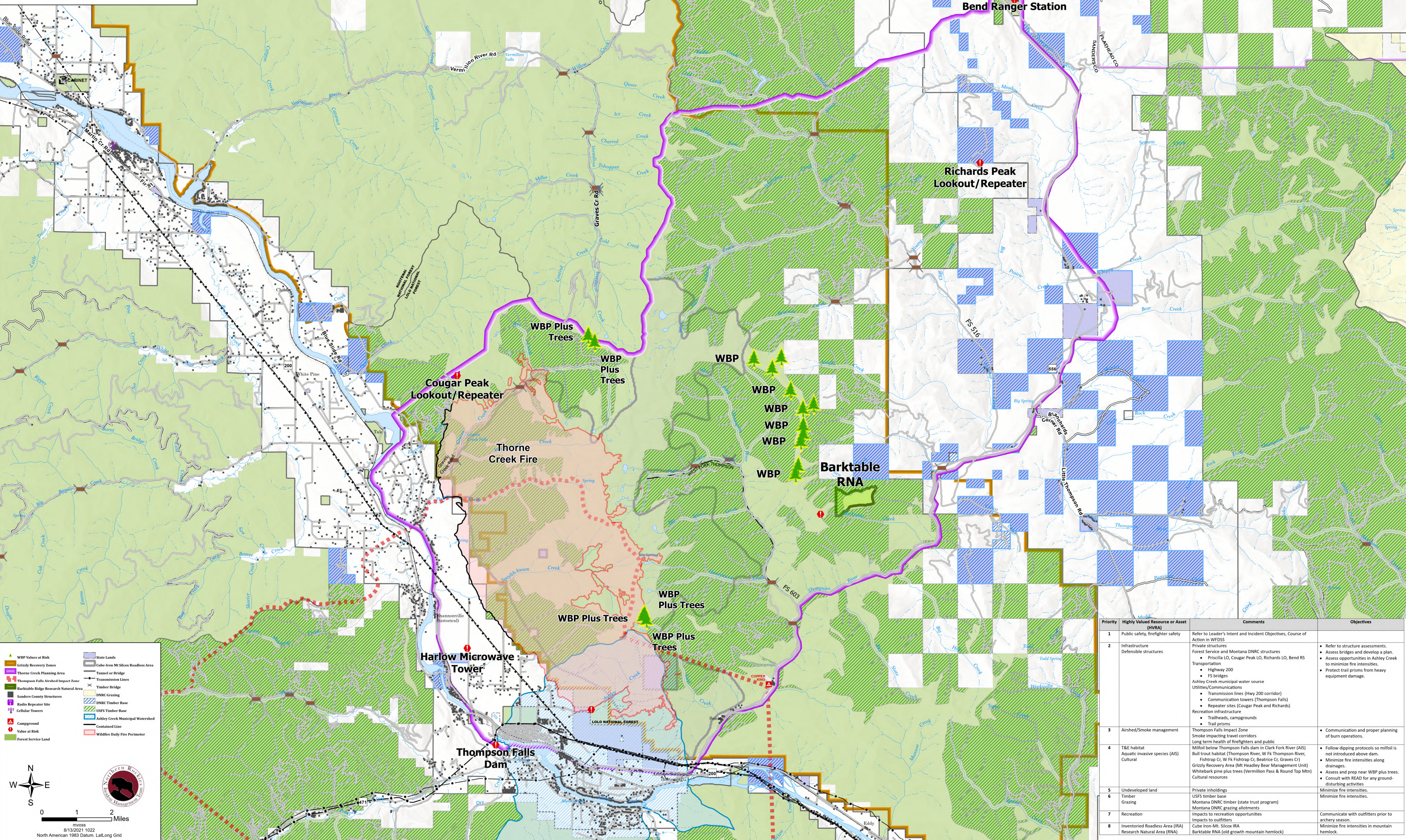


# Planning Area Map

West Lolo Complex - Thorne Creek  
 MT-LNF-000893  
 8/13/2021  
 23734 acres at 8/12/21 @ 2300



**Legend**

- WBP Values at Risk
- Grizzly Recovery Zones
- Thorne Creek Planning Area
- Thompson Falls Airshed Impact Zone
- Barktable Ridge Research Natural Area
- Sanders County Structures
- Radio Repeater Site
- Cellular Towers
- Campground
- Value at Risk
- Forest Service Land
- State Lands
- Cube-Iron Mt Silcox Roadless Area
- Tunnel or Bridge
- Transmission Lines
- Timber Bridge
- DNR Grazing
- DNR Timber Base
- USFS Timber Base
- Ashley Creek Municipal Watershed
- Contained Line
- Wildfire Daily Fire Perimeter

Scale: 0 to 2 Miles  
 8/13/2021 1022  
 North American 1983 Datum. Lat,Long Grid

Priority	Highly Valued Resource or Asset (HVRA)	Comments	Objectives
1	Public safety, firefighter safety	Refer to Leader's Intent and Incident Objectives, Course of Action in WFDSS	
2	Infrastructure Defensible structures	Private structures Forest Service and Montana DNR structures <ul style="list-style-type: none"> <li>Priscilla LO, Cougar Peak LO, Richards LO, Bend RS</li> </ul> Transportation <ul style="list-style-type: none"> <li>Highway 200</li> <li>FS bridges</li> </ul> Ashley Creek municipal water source Utilities/Communications <ul style="list-style-type: none"> <li>Transmission lines (Hwy 200 corridor)</li> <li>Communication towers (Thompson Falls)</li> <li>Repeater sites (Cougar Peak and Richards)</li> </ul> Recreation infrastructure <ul style="list-style-type: none"> <li>Trailheads, campgrounds</li> <li>Trail prisms</li> </ul>	<ul style="list-style-type: none"> <li>Refer to structure assessments.</li> <li>Assess bridges and develop a plan.</li> <li>Assess opportunities in Ashley Creek to minimize fire intensities.</li> <li>Protect trail prisms from heavy equipment damage.</li> </ul>
3	Airshed/Smoke management	Thompson Falls Impact Zone Smoke impacting travel corridors Long term health of firefighters and public	<ul style="list-style-type: none"> <li>Communication and proper planning of burn operations.</li> </ul>
4	T&E habitat Aquatic invasive species (AIS) Cultural	Milfoil below Thompson Falls dam in Clark Fork River (AIS) Bull trout habitat (Thompson River, W Fk Thompson River, Fishtrap Cr, W Fk Fishtrap Cr, Beatrice Cr, Graves Cr) Grizzly Recovery Area (Mt Headley Bear Management Unit) Whitebark pine plus trees (Vermilion Pass & Round Top Mtn) Cultural resources	<ul style="list-style-type: none"> <li>Follow dipping protocols so milfoil is not introduced above dam.</li> <li>Minimize fire intensities along drainages.</li> <li>Assess and prep near WBP plus trees.</li> <li>Consult with READ for any ground-disturbing activities</li> </ul>
5	Undeveloped land	Private inholdings	Minimize fire intensities.
6	Timber Grazing	USFS timber base Montana DNR timber (state trust program) Montana DNR grazing allotments	Minimize fire intensities.
7	Recreation	Impacts to recreation opportunities Impacts to outfitters	Communicate with outfitters prior to archery season.
8	Inventoried Roadless Area (IRA) Research Natural Area (RNA)	Cube-Iron Mt. Silcox IRA Barktable RNA (old growth mountain hemlock)	Minimize fire intensities in mountain hemlock.