

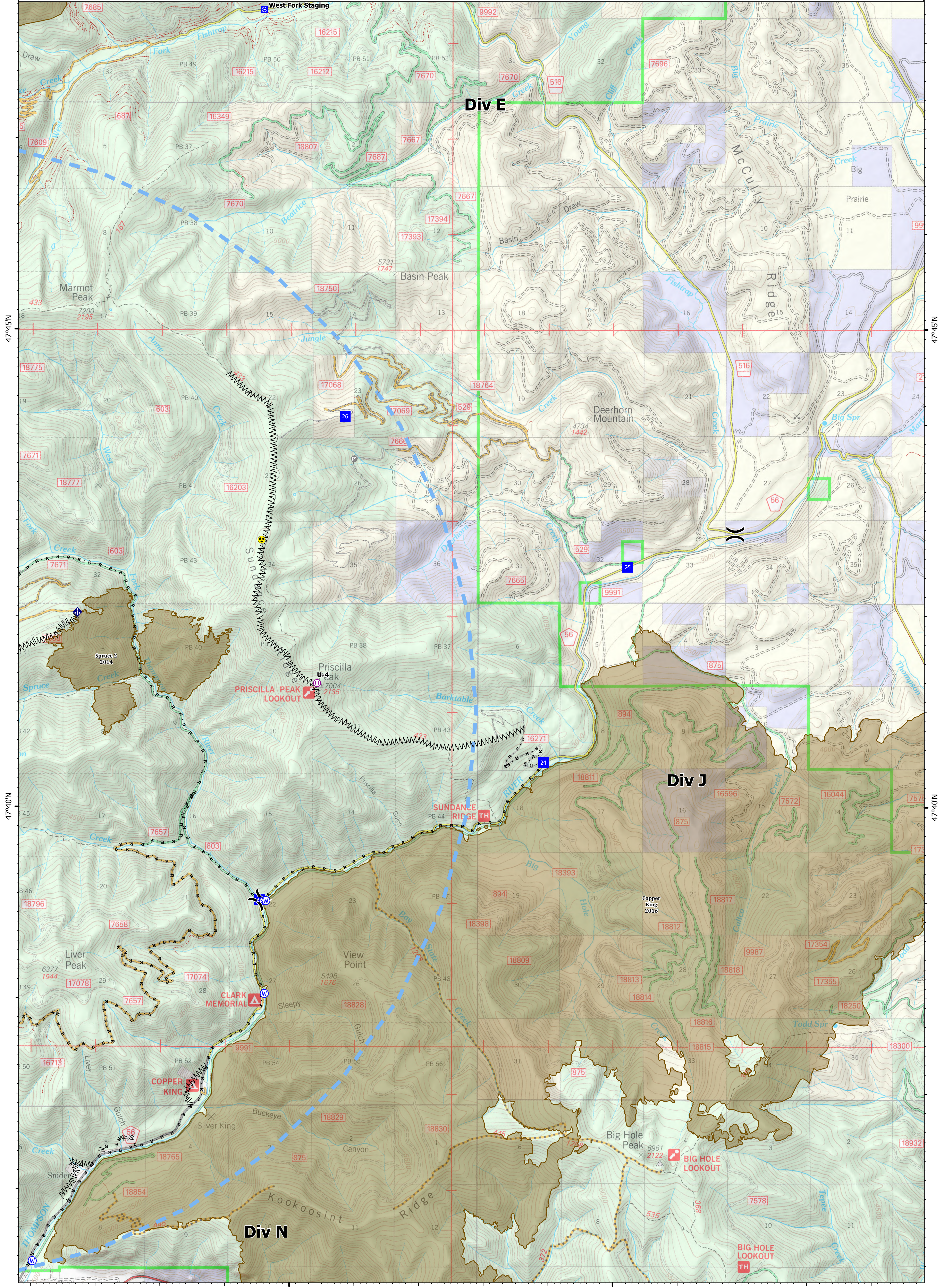
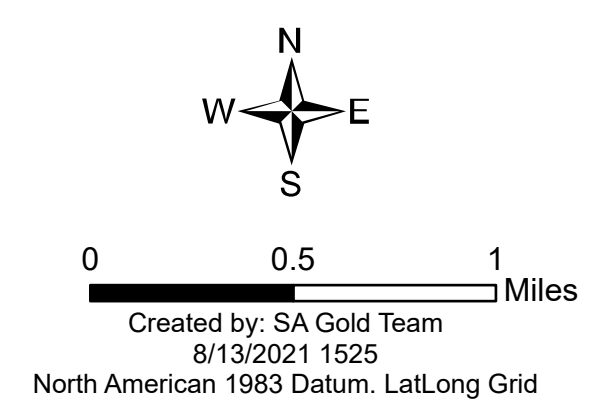


Ops Map

West Lolo Complex - Div J
 MT-LNF-000893
 8/13/2021 Day
 23734 acres at 8/12/21 @ 2300

- Unimproved Landing Area
- ⌋ Division Break
- Drop Point
- ⊠ Closure
- ⊞ Staging Area
- ⊙ Gate
- ⊕ Mobile Weather Unit
- ⚠ Hazard
- ⊕ Water Source
- ⊗ Completed Dozer Line
- ⊞ Completed Fuel Break
- ⊞ Completed Hand Break
- ⊞ Completed Road as Line
- Access or Improved Road
- Temporary Flight Restriction
- Fire History

Type	Label	Latitude	Longitude
Water Source		47° 35.247' N 115° 13.972' W	
Water Source		47° 39.021' N 115° 10.373' W	
Hazard		47° 42.798' N 115° 10.449' W	
Water Source		47° 38.049' N 115° 10.394' W	
Drop Point	22	47° 39.030' N 115° 10.472' W	
Drop Point	24	47° 40.469' N 115° 06.079' W	
Drop Point	25	47° 42.515' N 115° 04.775' W	
Drop Point	26	47° 44.091' N 115° 09.160' W	
Unimproved Landing Area	U-4	47° 41.298' N 115° 09.587' W	



115°10'W

115°5'W

47°45'N

47°45'N

47°40'N

47°40'N