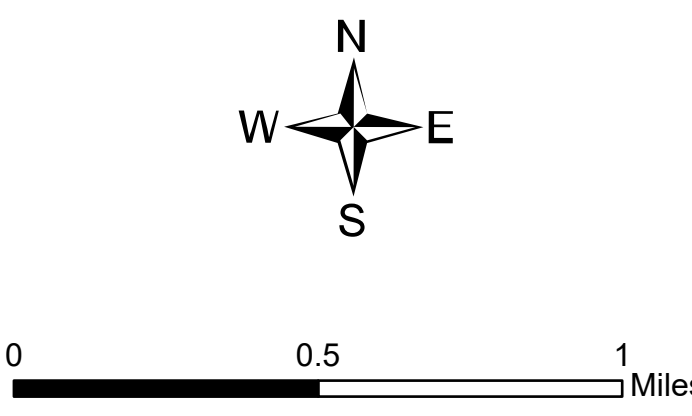


Ops Map
 West Lolo Complex - Div N
 MT-LNF-000893
 8/13/2021 Day
 23734 acres at 8/12/21 @ 2300

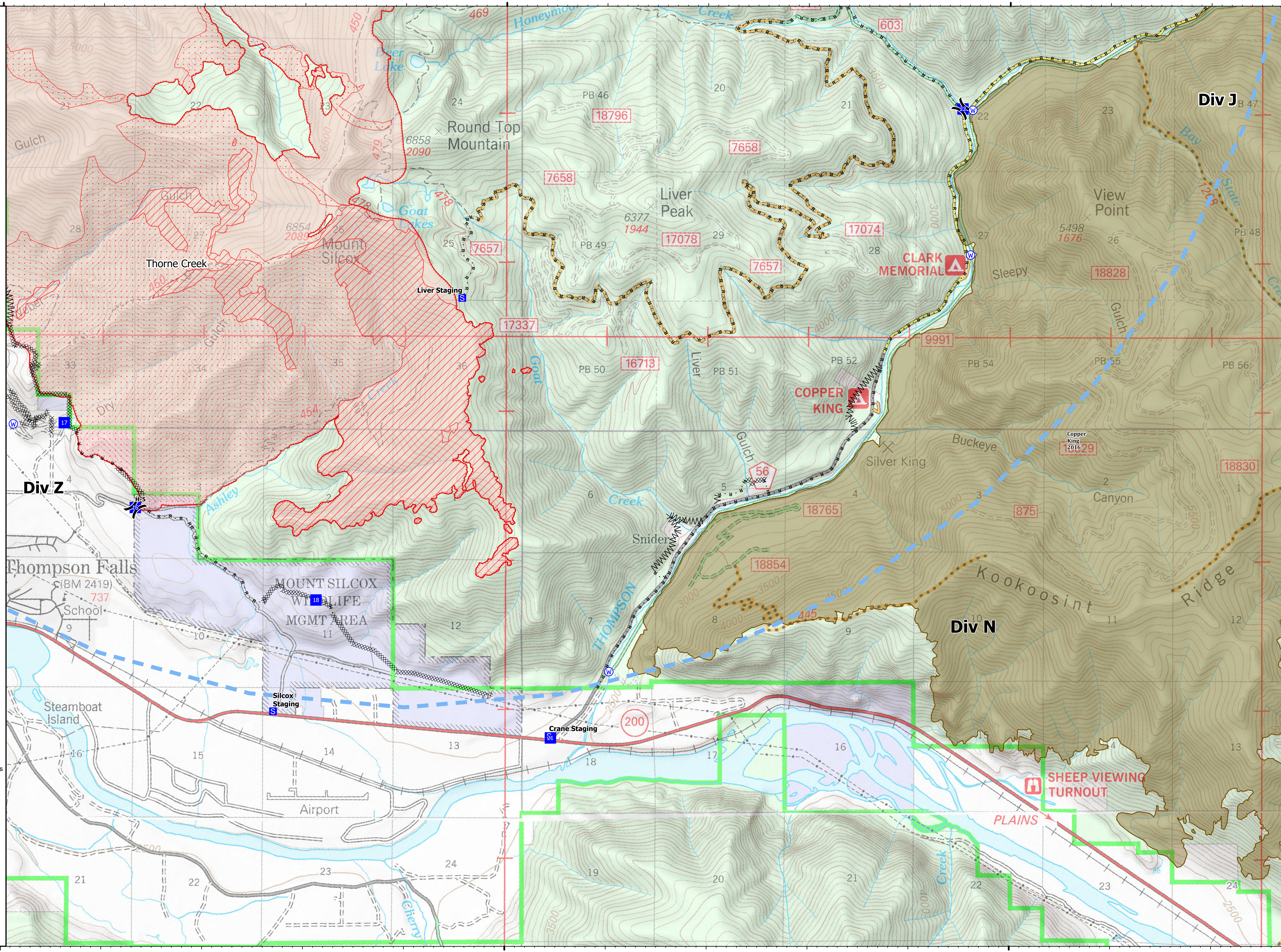


- Helispot
- ✈ Division Break
- Drop Point
- Ⓢ Staging Area
- Ⓜ Water Source
- ⋯ Completed Dozer Line
- ⋯ Completed Fuel Break
- ⋯ Completed Hand Line
- ⋯ Completed Road as Line
- Access or Improved Road
- ⋯ Incident Action Point
- ⋯ Temporary Flight Restriction
- Fire Edge
- Contained Line
- ▨ IR Intense Heat
- ▨ IR Scattered Heat
- ▨ Wildfire Daily Fire Perimeter
- ▨ Fire History

Type	Label	Latitude	Longitude
Water Source		47° 35.247' N 115° 13.972' W	
Water Source		47° 39.021' N 115° 10.373' W	
Water Source		47° 35.556' N 115° 20.064' W	
Water Source		47° 36.895' N 115° 19.888' W	
Water Source		47° 35.554' N 115° 20.029' W	
Water Source		47° 38.049' N 115° 10.394' W	
Drop Point	15	47° 37.789' N 115° 20.369' W	
Drop Point	16	47° 36.338' N 115° 18.675' W	
Drop Point	17	47° 36.905' N 115° 19.383' W	
Drop Point	18	47° 35.722' N 115° 16.879' W	
Drop Point	21	47° 34.801' N 115° 14.549' W	
Drop Point	22	47° 39.030' N 115° 10.472' W	
Helispot	H-5	47° 36.338' N 115° 18.675' W	



Created by: SA Gold Team
 8/13/2021 1514
 North American 1983 Datum, LatLong Grid



115°20'W

115°15'W

115°10'W

47°35'N

47°35'N