


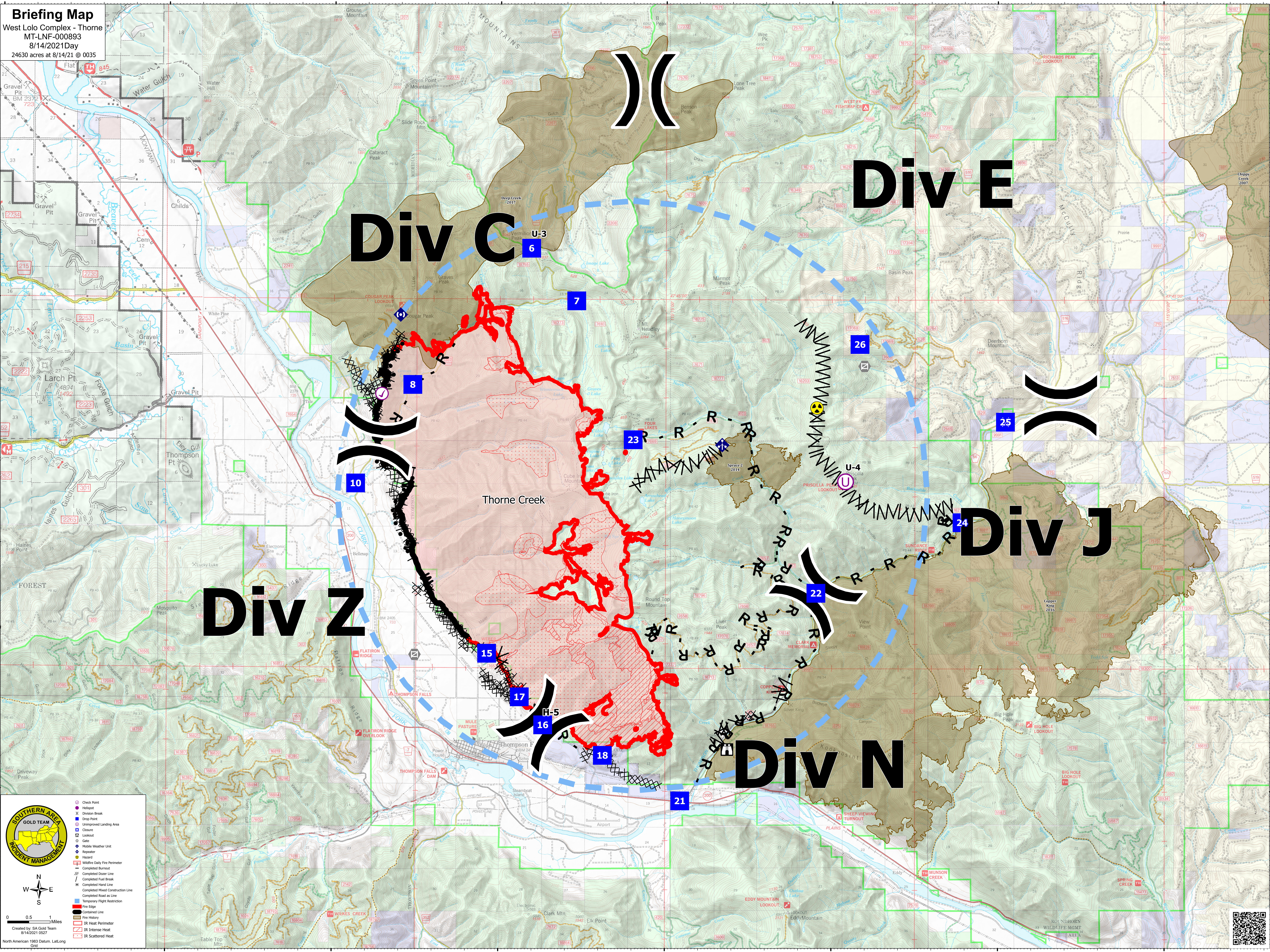
**Briefing Map**  
 West Lolo Complex - Thorne  
 MT-LNF-000893  
 8/14/2021 Day  
 24630 acres at 8/14/21 @ 0035



**Southern Area Gold Team Incident Management**

- Check Point
- Helipoint
- ⌘ Division Break
- Drop Point
- ▭ Unimproved Landing Area
- Closure
- ⊞ Lookout
- ⊞ Gate
- ⊞ Mobile Weather Unit
- ⊞ Repeater
- ⊞ Hazard
- ▭ Wildfire Daily Fire Perimeter
- ▭ Completed Burnout
- ▭ Completed Doser Line
- ▭ Completed Fuel Break
- ▭ Completed Hand Line
- ▭ Completed Head Construction Line
- ▭ Completed Road as Line
- ▭ Temporary Flight Restriction
- ▭ Fire Edge
- ▭ Contained Line
- ▭ Fire Heavy
- ▭ IR Heat Perimeter
- ▭ IR Intense Heat
- ▭ IR Scattered Heat

0 0.5 1 Miles  
 Created by SA Gold Team  
 8/14/2021 0527  
 North American 1983 Datum. Lat/Long Grid



115°30'W 115°25'W 115°20'W 115°15'W 115°10'W 115°5'W 115°W