

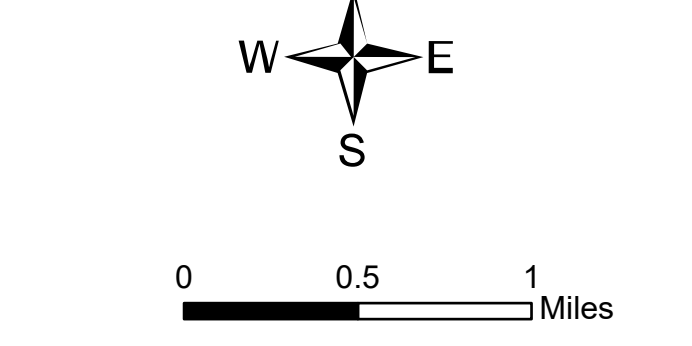
Ops Map

West Lolo Complex - Div E
 MT-LNF-000893
 8/14/2021 Day
 23734 acres at 8/12/21 @ 2300



- Check Point
- Unimproved Landing Area
- Division Break
- Drop Point
- Closure
- Staging Area
- Gate
- Mobile Weather Unit
- Repeater
- Hazard
- Water Source
- Completed Burnout
- Completed Dozer Line
- Completed Fuel Break
- Completed Hand Line
- Completed Mixed Construction Line
- Completed Road as Line
- Access or Improved Road
- Temporary Flight Restriction
- Fire Edge
- Contained Line
- IR Intense Heat
- IR Scattered Heat
- Wildfire Daily Fire Perimeter
- Fire History

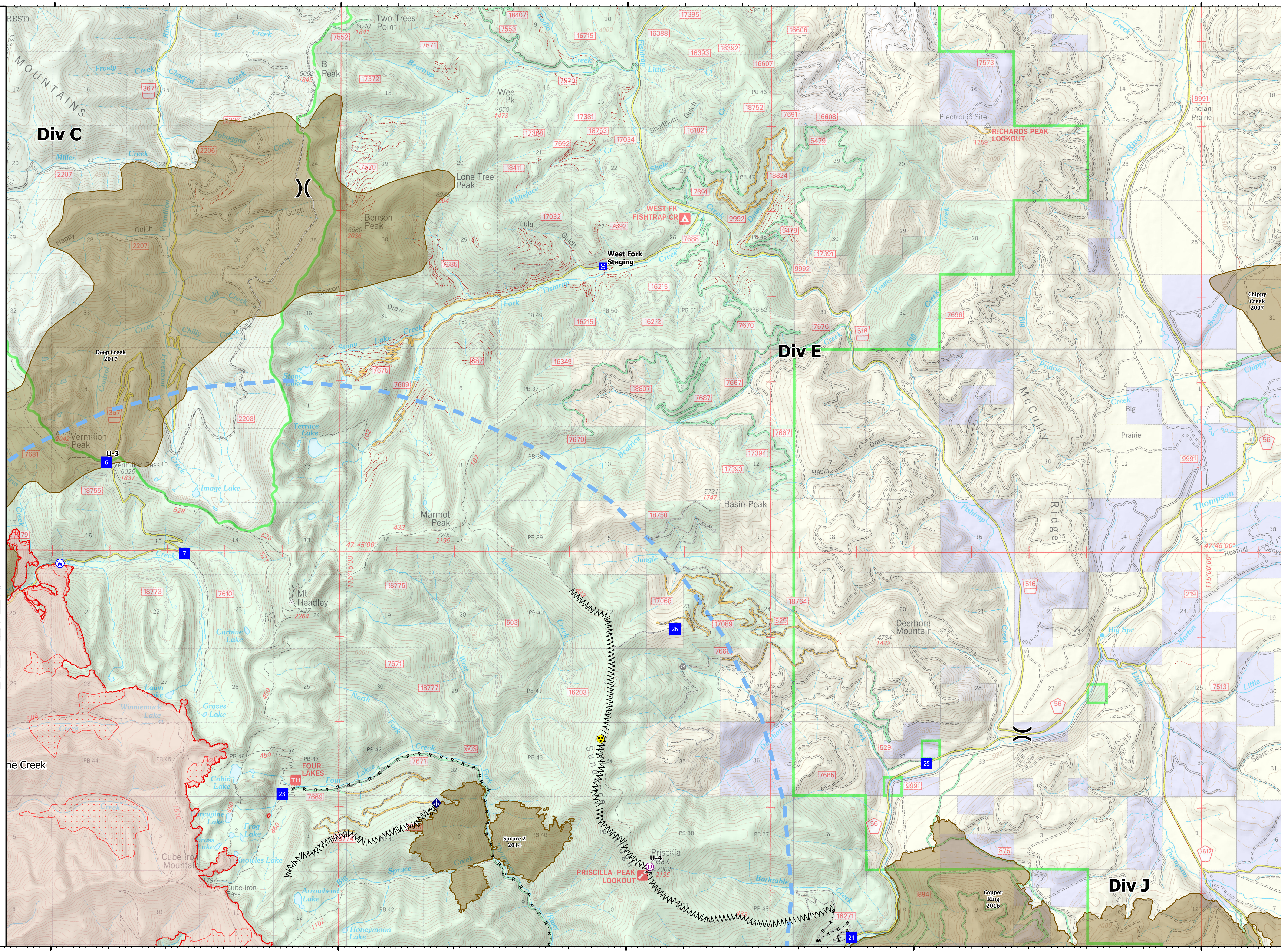
Type	Label	Latitude	Longitude
Water Development or Draft Site		47° 42.859' N 115° 22.925' W	
Water Source		47° 44.839' N 115° 19.867' W	
Water Source		47° 42.855' N 115° 22.925' W	
Hazard		47° 42.798' N 115° 10.449' W	
Water Source		47° 43.290' N 115° 22.667' W	
Water Source		47° 42.862' N 115° 22.930' W	
Drop Point	23	47° 42.141' N 115° 15.984' W	
Drop Point	24	47° 40.469' N 115° 06.079' W	
Drop Point	25	47° 42.515' N 115° 04.775' W	
Drop Point	26	47° 44.091' N 115° 09.160' W	
Drop Point	6	47° 46.028' N 115° 19.064' W	
Drop Point	7	47° 44.961' N 115° 17.699' W	
Drop Point	8	47° 43.248' N 115° 22.627' W	
Unimproved Landing Area	U-3	47° 46.029' N 115° 19.064' W	
Unimproved Landing Area	U-4	47° 41.298' N 115° 09.587' W	



0 0.5 1 Miles

Created by: SA Gold Team
 8/13/2021 2138

North American 1983 Datum, Lat/Long Grid



115°20'W 115°15'W 115°10'W 115°5'W 115°W