

115°25'W

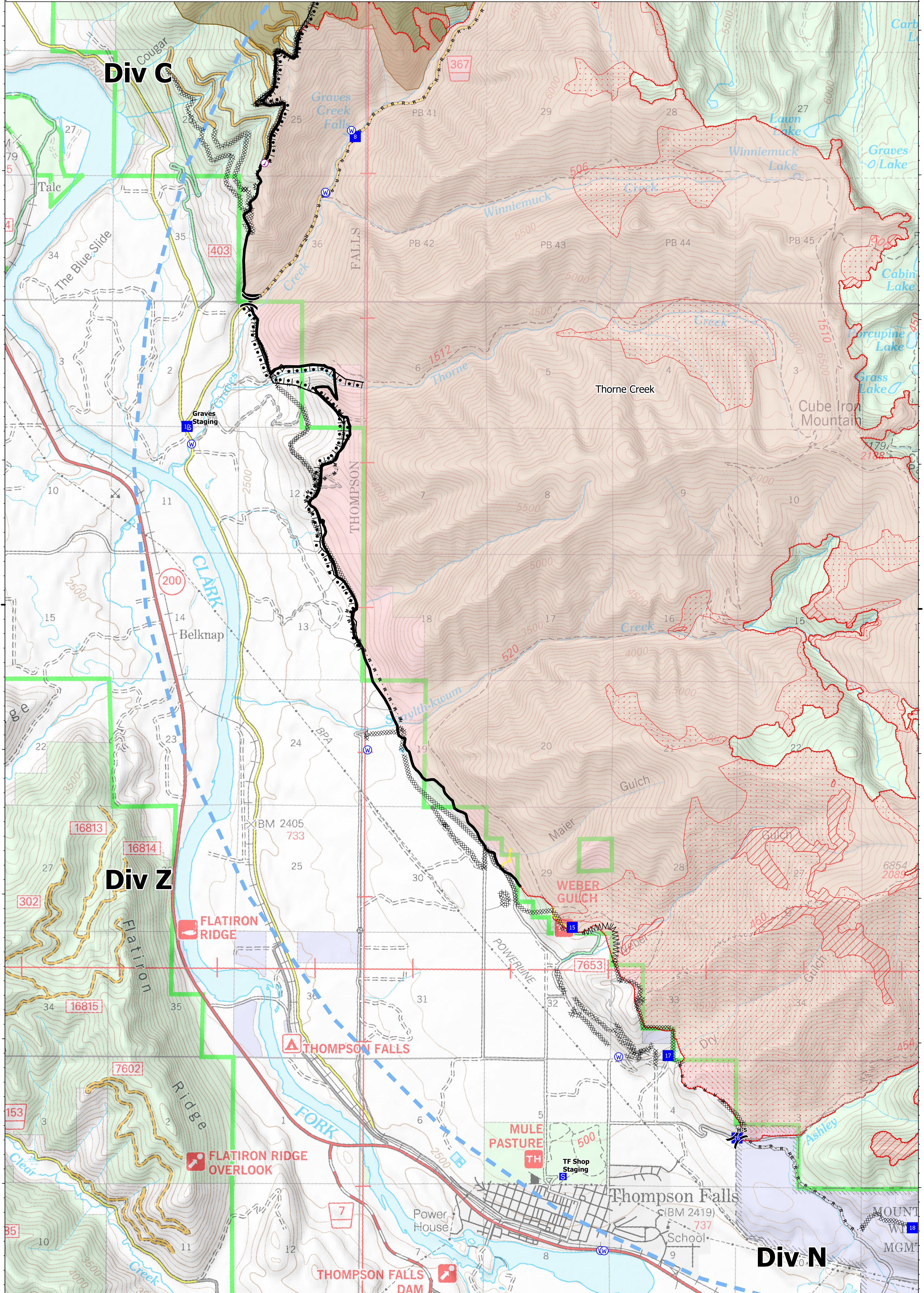
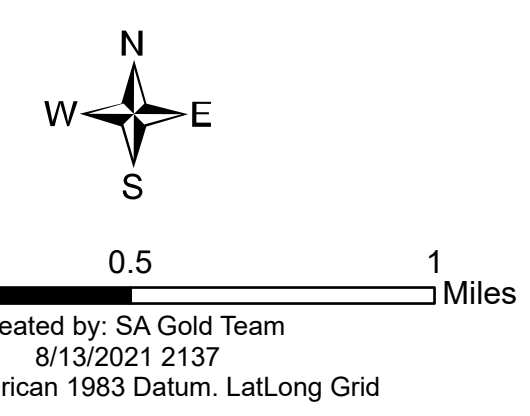
115°20'W



**Ops Map**  
 West Lolo Complex - Div Z  
 MT-LNF-000893  
 8/14/2021 Day  
 23734 acres at 8/12/21 @ 2300

- Check Point
- Helispot
- ⌋ Division Break
- Drop Point
- Staging Area
- Other
- ⬇ Gate
- ⬇ Repeater
- ⬇ Water Source
- ⊗ Completed Burnout
- ⊗ Completed Dozer Line
- ⊗ Completed Fuel Break
- H - Completed Hand Line
- M - Completed Mixed Construction Line
- R - Completed Road as Line
- Access or Improved Road
- ⋯ Incident Action Point
- ⋯ Temporary Flight Restriction
- Fire Edge
- Contained Line
- IR Intense Heat
- IR Scattered Heat
- Wildfire Daily Fire Perimeter
- Fire History

Type	Label	Latitude	Longitude
Water Source		47° 41.117' N 115° 24.285' W	
Water Development or Draft Site		47° 42.859' N 115° 22.925' W	
Water Source		47° 42.859' N 115° 23.867' W	
Water Source		47° 42.859' N 115° 23.925' W	
Water Source		47° 35.556' N 115° 20.064' W	
Water Source		47° 36.009' N 115° 22.471' W	
Water Source		47° 36.895' N 115° 19.888' W	
Water Source		47° 43.290' N 115° 22.667' W	
Water Source		47° 43.262' N 115° 22.793' W	
Check Point		47° 43.061' N 115° 23.556' W	
Water Source		47° 35.556' N 115° 20.029' W	
Drop Point	10	47° 41.239' N 115° 24.320' W	
Drop Point	15	47° 37.789' N 115° 20.369' W	
Drop Point	16	47° 36.338' N 115° 18.679' W	
Drop Point	17	47° 36.805' N 115° 19.382' W	
Drop Point	18	47° 35.722' N 115° 16.879' W	
Drop Point	8	47° 43.248' N 115° 22.627' W	



115°25'W

115°20'W

47°40'N

47°40'N