

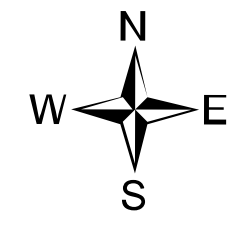
# Ops Map

West Lolo Complex - Thorne  
MT-LNF-000893  
8/14/2021 Day  
23734 acres at 8/12/21 @ 2300



- Check Point
- Helispot
- Unimproved Landing Area
- ⌋ Division Break
- Drop Point
- Closure
- Staging Area
- Lookout
- Other
- Gate
- Mobile Weather Unit
- Repeater
- Hazard
- Water Source
- ⊗ Completed Burnout
- ⊗ Completed Dozer Line
- ⊗ Completed Fuel Break
- ⊗ Completed Hand Line
- ⊗ Completed Mixed Construction Line
- ⊗ Completed Road as Line
- Access or Improved Road
- ⊗ Incident Action Point
- ⊗ Temporary Flight Restriction
- Fire Edge
- Contained Line
- IR Intense Heat
- IR Scattered Heat
- Wildfire Daily Fire Perimeter
- Fire History

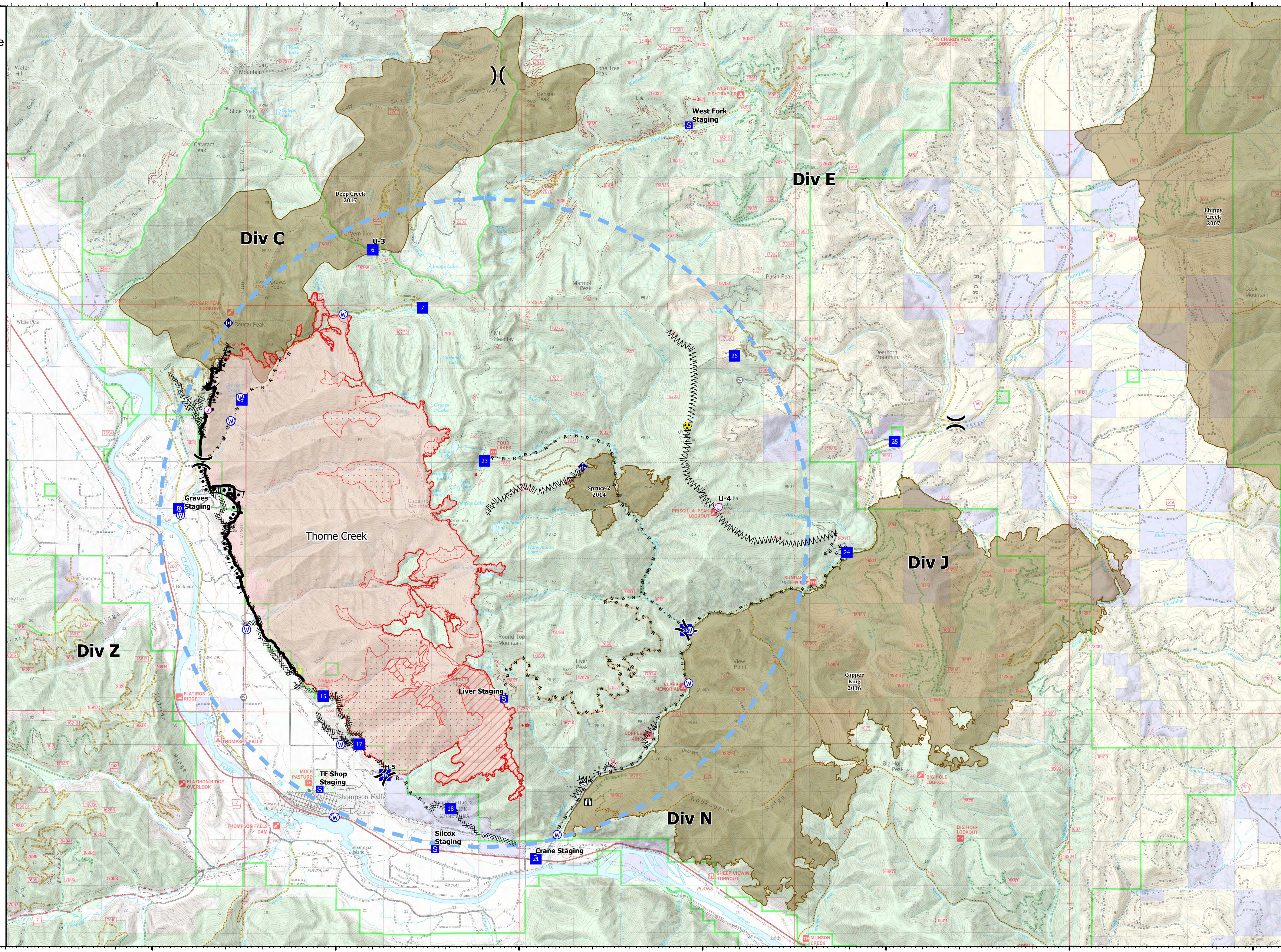
Type	Label	Latitude	Longitude
Water Source	U-1	47° 41.117 N 115° 24.288 W	
Water Development or Draft Site	U-2	47° 42.859 N 115° 22.925 W	
Water Source	U-3	47° 44.839 N 115° 19.867 W	
Water Source	U-4	47° 42.859 N 115° 22.925 W	
Water Source	U-5	47° 35.247 N 115° 13.972 W	
Water Source	U-6	47° 39.021 N 115° 10.373 W	
Water Source	U-7	47° 35.556 N 115° 20.064 W	
Water Source	U-8	47° 39.009 N 115° 22.471 W	
Water Source	U-9	47° 36.895 N 115° 19.888 W	
Hazard	U-10	47° 42.798 N 115° 10.449 W	
Water Source	U-11	47° 43.290 N 115° 22.667 W	
Water Source	U-12	47° 42.862 N 115° 22.930 W	
Check Point	U-13	47° 43.061 N 115° 23.554 W	
Water Source	U-14	47° 35.554 N 115° 20.029 W	
Water Source	U-15	47° 38.049 N 115° 16.394 W	
Drop Point	10	47° 41.239 N 115° 24.335 W	
Drop Point	15	47° 37.789 N 115° 20.369 W	
Drop Point	16	47° 36.138 N 115° 16.675 W	
Drop Point	17	47° 36.905 N 115° 19.383 W	
Drop Point	18	47° 35.722 N 115° 16.879 W	
Drop Point	21	47° 34.801 N 115° 14.549 W	
Drop Point	22	47° 39.037 N 115° 10.472 W	
Drop Point	23	47° 42.141 N 115° 15.984 W	
Drop Point	24	47° 40.469 N 115° 06.079 W	
Drop Point	25	47° 42.515 N 115° 06.175 W	
Drop Point	26	47° 44.091 N 115° 09.160 W	
Drop Point	6	47° 46.028 N 115° 19.064 W	
Drop Point	7	47° 44.248 N 115° 22.627 W	
Drop Point	8	47° 43.248 N 115° 22.627 W	
Helispot	H-5	47° 36.338 N 115° 18.675 W	
Unimproved Landing Area	U-3	47° 46.028 N 115° 19.064 W	
Unimproved Landing Area	U-4	47° 41.296 N 115° 09.587 W	



0 1 2 Miles

Created by: SA Gold Team  
8/13/2021 2218

North American 1983 Datum, Lat/Long Grid



115°30'W

115°25'W

115°20'W

115°15'W

115°10'W

115°5'W

115°W

114°55'W

47°35'N

47°40'N

47°45'N

47°50'N

47°35'N

47°40'N

47°45'N

47°50'N