

115°25'W

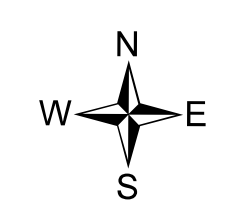
115°20'W



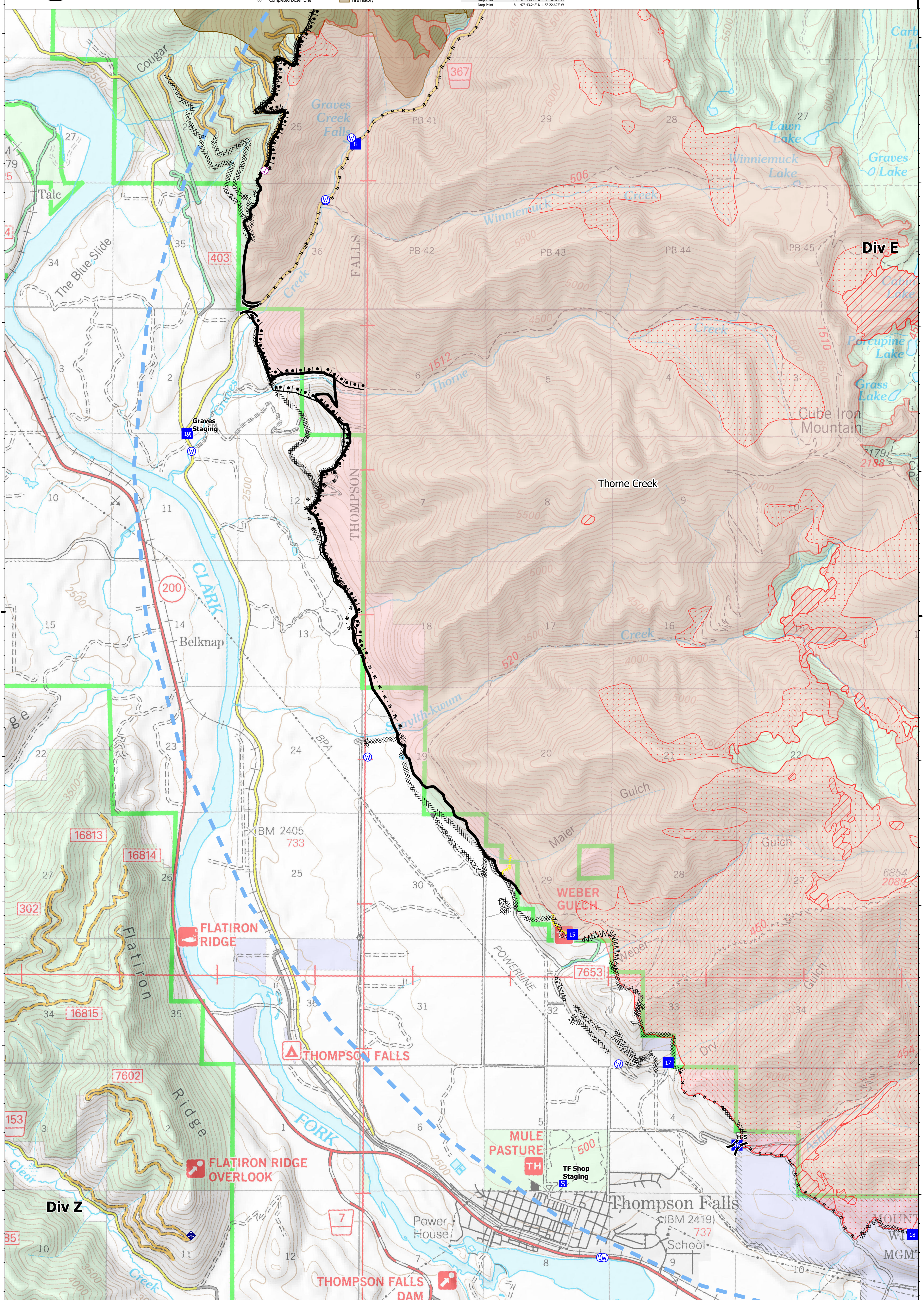
**Ops Map**  
 West Lolo Complex - Div Z  
 MT-LNF-000893  
 8/15/2021 Day  
 25930 acres at 8/15/21 @ 0041

- Check Point
- Helispot
- ⌘ Division Break
- Drop Point
- Staging Area
- Gate
- ⊕ Mobile Weather Unit
- ⊕ Repeater
- ⊕ Water Source
- ⊕ Completed Burnout
- ⊕ Completed Dozer Line
- M Completed Fuel Break
- H Completed Hand Line
- M Completed Mixed Construction Line
- R Completed Road as Line
- Access or Improved Road
- ▨ Incident Action Point
- ▨ Temporary Flight Restriction
- ▨ Contained Line
- ▨ IR Intense Heat
- ▨ IR Scattered Heat
- ▨ Wildfire Daily Fire Perimeter
- ▨ Fire History

Type	Label	Latitude	Longitude
Water Source		47° 41.117' N 115° 24.288' W	
Water Development or Draft Site		47° 43.839' N 115° 23.923' W	
Water Source		47° 44.839' N 115° 19.965' W	
Water Source		47° 42.855' N 115° 22.925' W	
Water Source		47° 38.556' N 115° 26.564' W	
Water Source		47° 39.009' N 115° 22.471' W	
Water Source		47° 36.895' N 115° 19.888' W	
Water Source		47° 43.295' N 115° 22.663' W	
Water Source		47° 42.862' N 115° 22.930' W	
Check Point		47° 43.061' N 115° 23.554' W	
Water Source		47° 38.554' N 115° 20.029' W	
Drop Point		10 47° 41.239' N 115° 24.335' W	
Drop Point		15 47° 37.789' N 115° 20.369' W	
Drop Point		16 47° 36.338' N 115° 18.679' W	
Drop Point		17 47° 36.905' N 115° 18.383' W	
Drop Point		18 47° 35.722' N 115° 16.879' W	
Drop Point		8 47° 43.248' N 115° 22.627' W	



0 0.5 1 Miles  
 Created by: SA Gold Team  
 8/15/2021 1715  
 North American 1983 Datum, Lat,Long Grid



115°25'W

115°20'W

47°40'N

47°40'N