

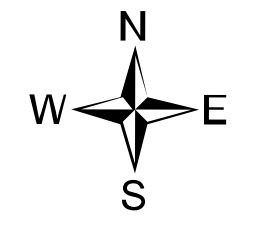
MAP Map

West Lolo Complex - Thorne
MT-LNF-000893
8/15/2021 Day
25930 acres at 8/15/21 @ 0041



- Check Point
- Helispot
- Unimproved Landing Area
- ↘ Division Break
- Drop Point
- Staging Area
- Lockout
- Other
- Gale
- Mobile Weather Unit
- Repeater
- Hazard
- Water Source
- Completed Burnout
- Completed Dozer Line
- M Completed Fuel Break
- H 2 Completed Hand Line
- M 2 Completed Mixed Construction Line
- R 2 Completed Road as Line
- Access or Improved Road
- Management Action Point
- Incident Action Point
- Temporary Flight Restriction
- Fire Edge
- Contained Line
- IR Intense Heat
- IR Scattered Heat
- Wildfire Daily Fire Perimeter
- Fire History

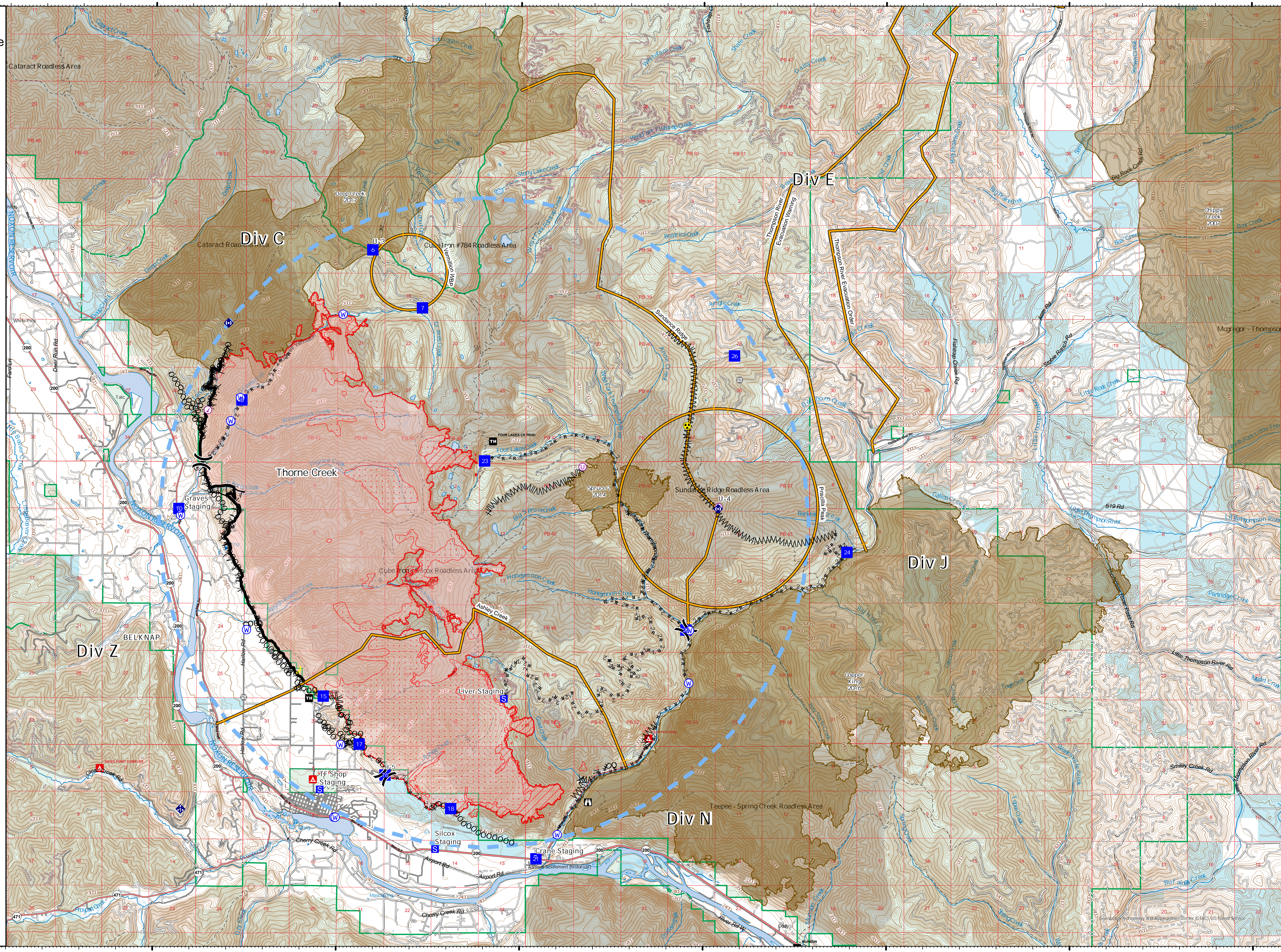
Type	Label	Latitude	Longitude
Water Source	W-1	47° 41.117' N 115° 24.288' W	
Water Source	W-2	47° 42.859' N 115° 22.925' W	
Water Source	W-3	47° 42.859' N 115° 19.967' W	
Water Source	W-4	47° 42.859' N 115° 22.925' W	
Water Source	W-5	47° 35.247' N 115° 13.972' W	
Water Source	W-6	47° 39.021' N 115° 10.373' W	
Water Source	W-7	47° 35.556' N 115° 20.064' W	
Water Source	W-8	47° 39.029' N 115° 22.471' W	
Water Source	W-9	47° 36.895' N 115° 19.888' W	
Hazard	H-1	47° 42.788' N 115° 10.449' W	
Water Source	W-10	47° 43.290' N 115° 22.667' W	
Water Source	W-11	47° 42.862' N 115° 22.930' W	
Check Point	CP-1	47° 43.001' N 115° 23.154' W	
Water Source	W-12	47° 35.554' N 115° 20.029' W	
Water Source	W-13	47° 38.049' N 115° 10.366' W	
Unimproved Landing Area	U-1	47° 42.035' N 115° 13.307' W	
Drop Point	DP-1	10 47° 41.229' N 115° 24.335' W	
Drop Point	DP-2	15 47° 37.789' N 115° 20.369' W	
Drop Point	DP-3	16 47° 36.338' N 115° 18.675' W	
Drop Point	DP-4	17 47° 36.909' N 115° 19.383' W	
Drop Point	DP-5	18 47° 35.722' N 115° 16.879' W	
Drop Point	DP-6	21 47° 34.801' N 115° 14.549' W	
Drop Point	DP-7	22 47° 39.030' N 115° 10.472' W	
Drop Point	DP-8	23 47° 42.141' N 115° 15.964' W	
Drop Point	DP-9	24 47° 40.669' N 115° 06.079' W	
Drop Point	DP-10	26 47° 44.091' N 115° 09.160' W	
Drop Point	DP-11	6 47° 46.028' N 115° 19.064' W	
Drop Point	DP-12	7 47° 44.629' N 115° 16.967' W	
Drop Point	DP-13	8 47° 43.248' N 115° 22.627' W	
Helispot	H-2	47° 36.338' N 115° 18.675' W	
Unimproved Landing Area	U-2	47° 42.029' N 115° 10.064' W	
Unimproved Landing Area	U-4	47° 41.295' N 115° 09.957' W	



0 1 2 Miles

Created by: SA Gold Team
8/15/2021 0834

North American 1983 Datum, Lat/Long Grid



47° 50N
47° 45N
47° 40N
47° 35N

115° 30W
115° 25W
115° 20W
115° 15W
115° 10W
115° 5W
115° W
114° 55W