

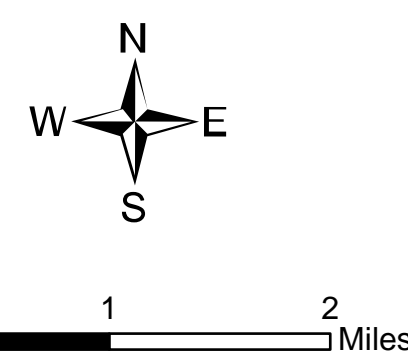
# Ops Map

West Lolo Complex - Thorne  
MT-LNF-000893  
8/15/2021 Day  
23734 acres at 8/12/21 @ 2300

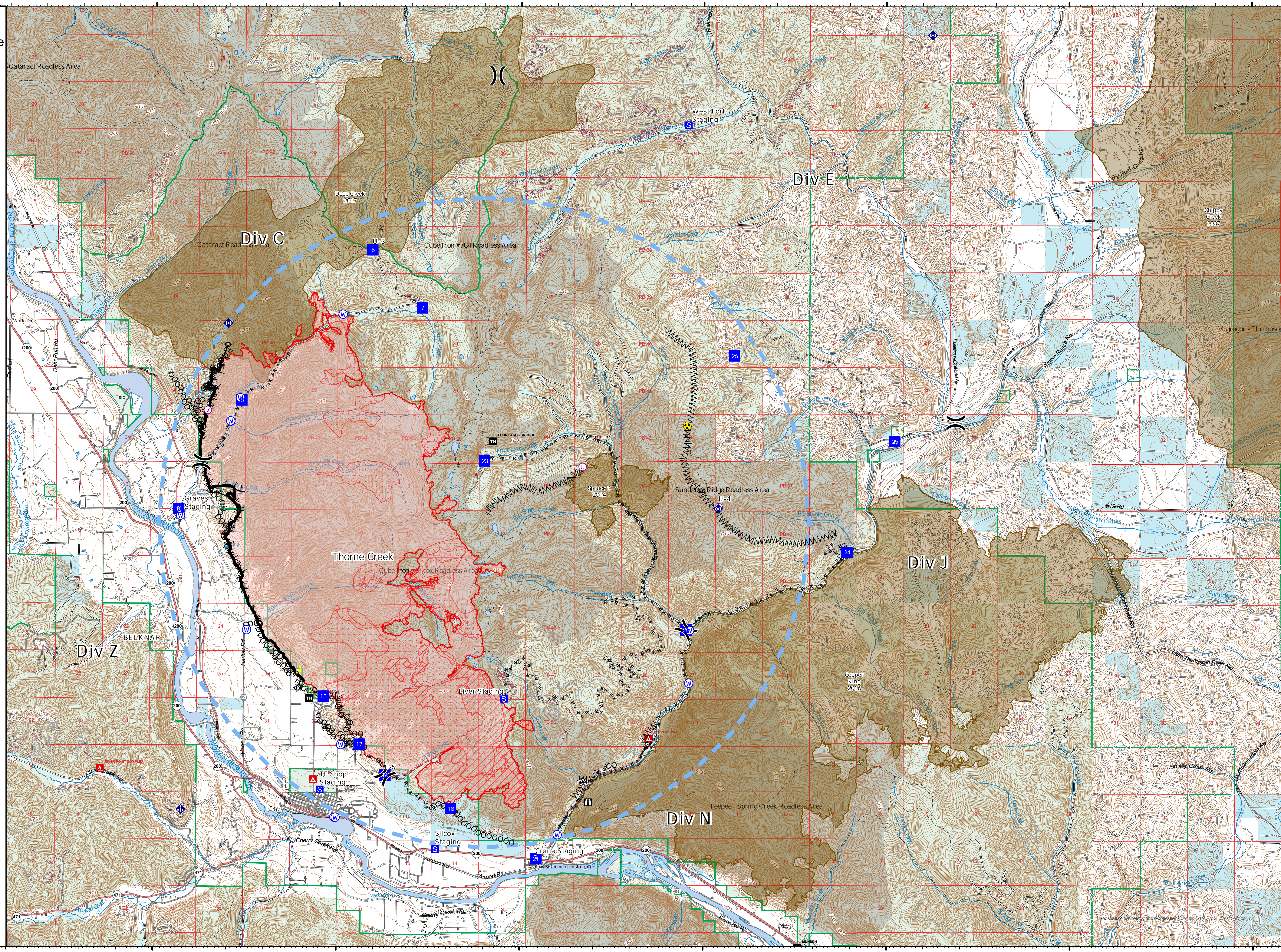


- Check Point
- Helispot
- Unimproved Landing Area
- ⌘ Division Break
- Drop Point
- Closure
- Staging Area
- Lookout
- Other
- Gate
- ◆ Mobile Weather Unit
- ◆ Repeater
- ◆ Hazard
- ◆ Water Source
- Completed Burnout
- Completed Dozer Line
- Completed Fuel Break
- Completed Hand Line
- Completed Mixed Construction Line
- Completed Road as Line
- Access or Improved Road
- Incident Action Point
- Temporary Flight Restriction
- Fire Edge
- Contained Line
- IR Intense Heat
- IR Scattered Heat
- Wildfire Daily Fire Perimeter
- Fire History

Type	Label	Latitude	Longitude
Water Source		47° 41.117 N 115° 24.288 W	
Water Source or Draft Site		47° 42.859 N 115° 22.905 W	
Water Source		47° 44.839 N 115° 19.667 W	
Water Source		47° 42.859 N 115° 22.905 W	
Water Source		47° 35.247 N 115° 13.912 W	
Water Source		47° 39.021 N 115° 10.373 W	
Water Source		47° 35.556 N 115° 20.564 W	
Water Source		47° 39.021 N 115° 22.471 W	
Water Source		47° 36.995 N 115° 19.888 W	
Hazard		47° 42.780 N 115° 10.449 W	
Water Source		47° 43.290 N 115° 22.667 W	
Water Source		47° 42.862 N 115° 22.903 W	
Check Point		47° 43.061 N 115° 23.554 W	
Water Source		47° 35.556 N 115° 20.564 W	
Water Source		47° 38.049 N 115° 10.394 W	
Unimproved Landing Area		47° 42.020 N 115° 13.307 W	
Drop Point		47° 41.229 N 115° 24.330 W	
Drop Point		15 47° 37.789 N 115° 20.369 W	
Drop Point		16 47° 36.330 N 115° 18.670 W	
Drop Point		17 47° 36.920 N 115° 19.888 W	
Drop Point		18 47° 35.722 N 115° 16.819 W	
Drop Point		21 47° 34.802 N 115° 14.549 W	
Drop Point		22 47° 36.200 N 115° 10.472 W	
Drop Point		23 47° 42.141 N 115° 15.984 W	
Drop Point		24 47° 40.449 N 115° 06.019 W	
Drop Point		25 47° 42.512 N 115° 04.710 W	
Drop Point		26 47° 44.091 N 115° 09.160 W	
Drop Point		6 47° 46.028 N 115° 19.064 W	
Drop Point		7 47° 44.261 N 115° 17.099 W	
Drop Point		8 47° 43.248 N 115° 22.627 W	
Helispot		H-5 47° 36.330 N 115° 18.670 W	
Unimproved Landing Area		U-3 47° 46.028 N 115° 19.064 W	
Unimproved Landing Area		U-4 47° 41.298 N 115° 09.587 W	



Created by: SA Gold Team  
8/14/2021 2116  
North American 1983 Datum, Lat/Long Grid



47° 50N  
47° 45N  
47° 40N  
47° 35N

115° 30W  
115° 25W  
115° 20W  
115° 15W  
115° 10W  
115° 5W  
115° W  
114° 55W