

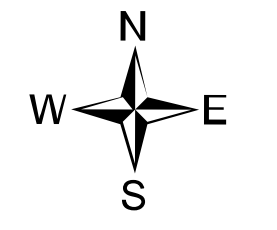
Ops Map

West Lolo Complex - Thorne
MT-LNF-000893
8/15/2021 Day
25930 acres at 8/15/21 @ 0041



- Check Point
- Hotspot
- Unimproved Landing Area
- ⌋ Division Break
- Drop Point
- Staging Area
- Lookout
- Other
- ⊙ Gate
- ⊕ Mobile Weather Unit
- ⊕ Repeater
- ⊕ Hazard
- ⊕ Water Source
- Completed Burnout
- Completed Dozer Line
- M Completed Fuel Break
- H Completed Hand Line
- M Completed Mixed Construction Line
- R Completed Road as Line
- Access or Improved Road
- Incident Action Point
- Temporary Flight Restriction
- Fire Edge
- Contained Line
- IR Intense Heat
- IR Scattered Heat
- Wildfire Daily Fire Perimeter
- Fire History

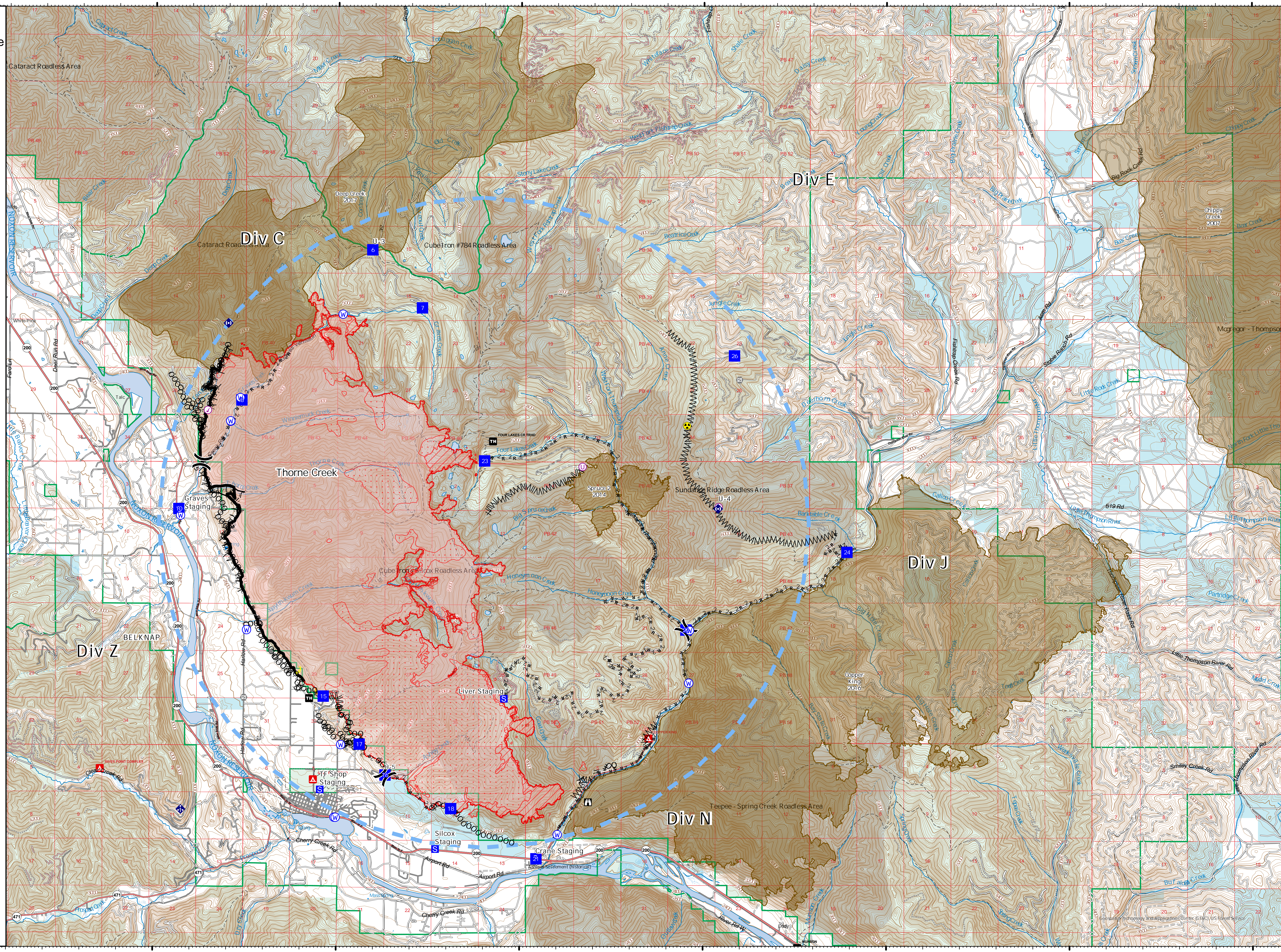
Type	Label	Latitude	Longitude
Water Source	47-41-117 N 115-24-288 W	47-41-117 N 115-24-288 W	
Water Source	47-42-859 N 115-22-925 W	47-42-859 N 115-22-925 W	
Water Source	47-42-859 N 115-19-967 W	47-42-859 N 115-19-967 W	
Water Source	47-42-859 N 115-22-925 W	47-42-859 N 115-22-925 W	
Water Source	47-35-247 N 115-13-972 W	47-35-247 N 115-13-972 W	
Water Source	47-39-021 N 115-10-373 W	47-39-021 N 115-10-373 W	
Water Source	47-35-556 N 115-20-064 W	47-35-556 N 115-20-064 W	
Water Source	47-39-029 N 115-22-471 W	47-39-029 N 115-22-471 W	
Water Source	47-36-895 N 115-19-888 W	47-36-895 N 115-19-888 W	
Hazard	47-42-788 N 115-10-449 W	47-42-788 N 115-10-449 W	
Water Source	47-43-290 N 115-22-667 W	47-43-290 N 115-22-667 W	
Water Source	47-42-862 N 115-22-930 W	47-42-862 N 115-22-930 W	
Check Point	47-43-001 N 115-23-154 W	47-43-001 N 115-23-154 W	
Water Source	47-35-554 N 115-20-029 W	47-35-554 N 115-20-029 W	
Water Source	47-38-049 N 115-10-346 W	47-38-049 N 115-10-346 W	
Unimproved Landing Area	47-42-035 N 115-13-307 W	47-42-035 N 115-13-307 W	
Drop Point	10 47-41-229 N 115-24-335 W	47-41-229 N 115-24-335 W	
Drop Point	15 47-37-789 N 115-20-369 W	47-37-789 N 115-20-369 W	
Drop Point	16 47-36-338 N 115-18-675 W	47-36-338 N 115-18-675 W	
Drop Point	17 47-36-909 N 115-19-383 W	47-36-909 N 115-19-383 W	
Drop Point	18 47-35-722 N 115-16-879 W	47-35-722 N 115-16-879 W	
Drop Point	21 47-34-801 N 115-14-549 W	47-34-801 N 115-14-549 W	
Drop Point	22 47-39-030 N 115-10-472 W	47-39-030 N 115-10-472 W	
Drop Point	23 47-42-141 N 115-15-964 W	47-42-141 N 115-15-964 W	
Drop Point	24 47-40-649 N 115-06-079 W	47-40-649 N 115-06-079 W	
Drop Point	26 47-44-091 N 115-09-160 W	47-44-091 N 115-09-160 W	
Drop Point	6 47-46-028 N 115-19-064 W	47-46-028 N 115-19-064 W	
Drop Point	7 47-44-029 N 115-16-699 W	47-44-029 N 115-16-699 W	
Drop Point	8 47-43-248 N 115-22-627 W	47-43-248 N 115-22-627 W	
Hotspot	H-5 47-36-338 N 115-18-675 W	47-36-338 N 115-18-675 W	
Unimproved Landing Area	U-3 47-46-029 N 115-19-064 W	47-46-029 N 115-19-064 W	
Unimproved Landing Area	U-4 47-41-296 N 115-09-957 W	47-41-296 N 115-09-957 W	



0 1 2 Miles

Created by: SA Gold Team
8/15/2021 0842

North American 1983 Datum, LatLong Grid



47° 50N
47° 45N
47° 40N
47° 35N

115° 30W
115° 25W
115° 20W
115° 15W
115° 10W
115° 5W
115° W
114° 55W