

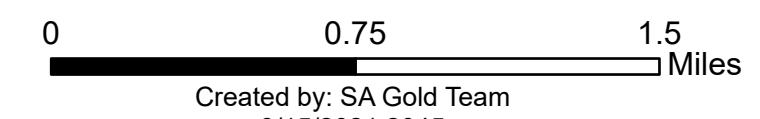


Ops Map

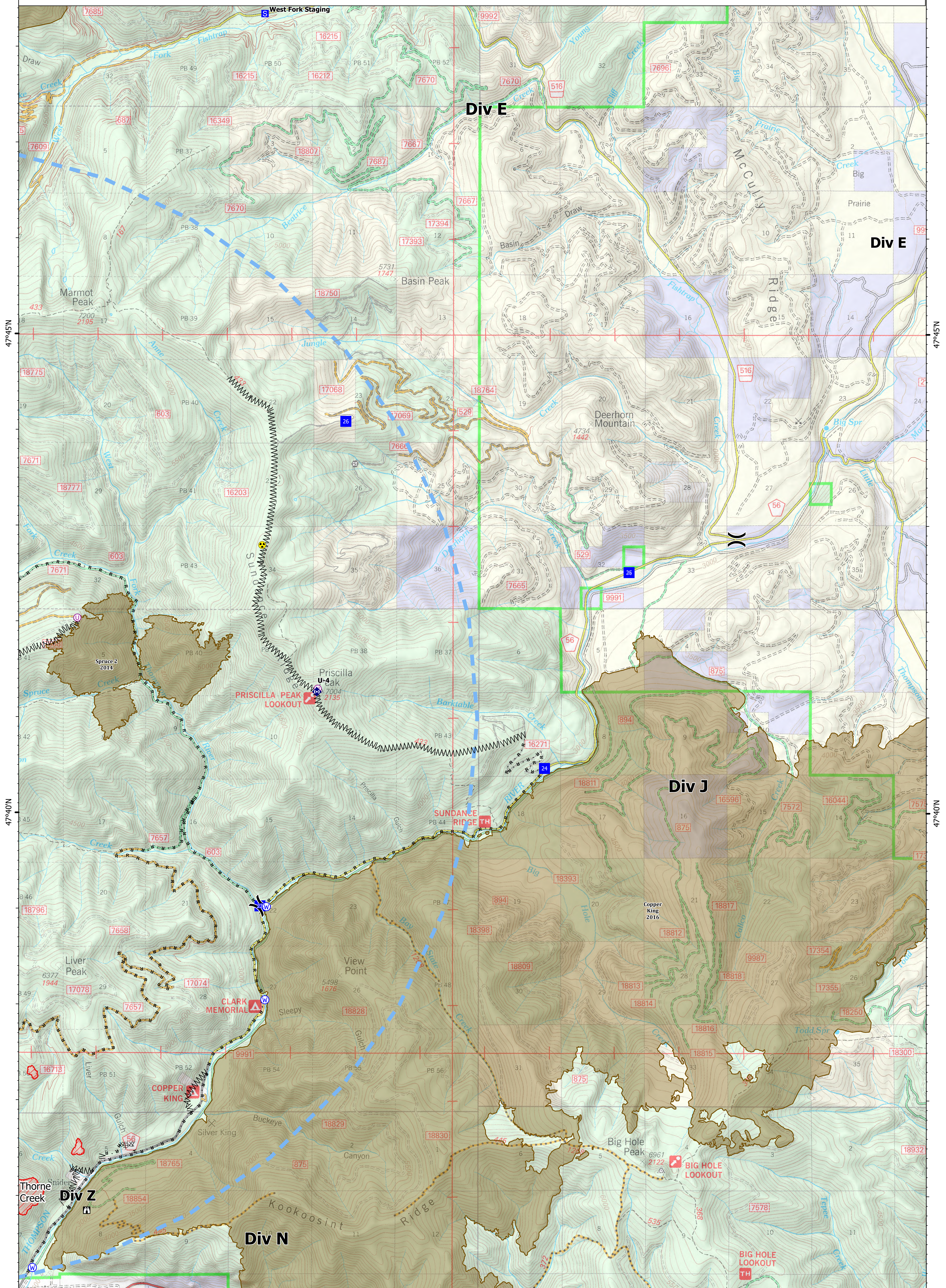
West Lolo Complex - Div J
 MT-LNF-000893
 8/16/2021 Day
 25930 acres at 8/15/21 @ 0041

- ⊙ Unimproved Landing Area
- ⌋ Division Break
- Drop Point
- ⊠ Closure
- ⊠ Staging Area
- ⊠ Lookout
- ⊠ Gate
- ⊠ Repeater
- ⊠ Hazard
- ⊠ Water Source
- ⊠ Completed Dozer Line
- ⊠ Completed Fuel Break
- ⊠ Completed Hand Line
- ⊠ Completed Road as Line
- ⊠ Access or Improved Road
- ⊠ Temporary Flight Restriction
- ⊠ Fire Edge
- ⊠ IR Intense Heat
- ⊠ Wildfire Daily Fire Perimeter
- ⊠ Fire History

Type	Label	Latitude	Longitude
Water Source		47° 35.247' N 115° 13.972' W	
Water Source		47° 39.021' N 115° 10.373' W	
Hazard		47° 42.798' N 115° 10.449' W	
Water Source		47° 38.049' N 115° 10.394' W	
Unimproved Landing Area		47° 42.035' N 115° 13.307' W	
Drop Point	22	47° 39.030' N 115° 10.472' W	
Drop Point	24	47° 40.469' N 115° 06.079' W	
Drop Point	25	47° 42.515' N 115° 04.775' W	
Drop Point	26	47° 44.091' N 115° 09.160' W	
Unimproved Landing Area	U-4	47° 41.298' N 115° 09.587' W	



Created by: SA Gold Team
 8/15/2021 2045
 North American 1983 Datum, Lat/Long Grid



115°10'W

115°5'W