

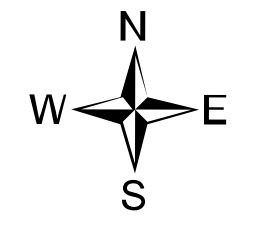
Ops Map

West Lolo Complex - Thorne
MT-LNF-000893
8/16/2021 Day
25930 acres at 8/15/21 @ 0041



- Check Point
- Helispot
- Unimproved Landing Area
- ⌋ Division Break
- Drop Point
- Closure
- Staging Area
- Lookout
- Other
- Gate
- ◆ Mobile Weather Unit
- ◆ Repeater
- ◆ Hazard
- Water Source
- ⊗ Completed Burnout
- ⊗ Completed Dozer Line
- ⊗ Completed Fuel Break
- ⊗ Completed Hand Line
- ⊗ Completed Mixed Construction Line
- ⊗ Completed Road as Line
- Access or Improved Road
- Incident Action Point
- Temporary Flight Restriction
- Fire Edge
- Contained Line
- IR Intense Heat
- IR Scattered Heat
- Wildfire Daily Fire Perimeter
- Fire History

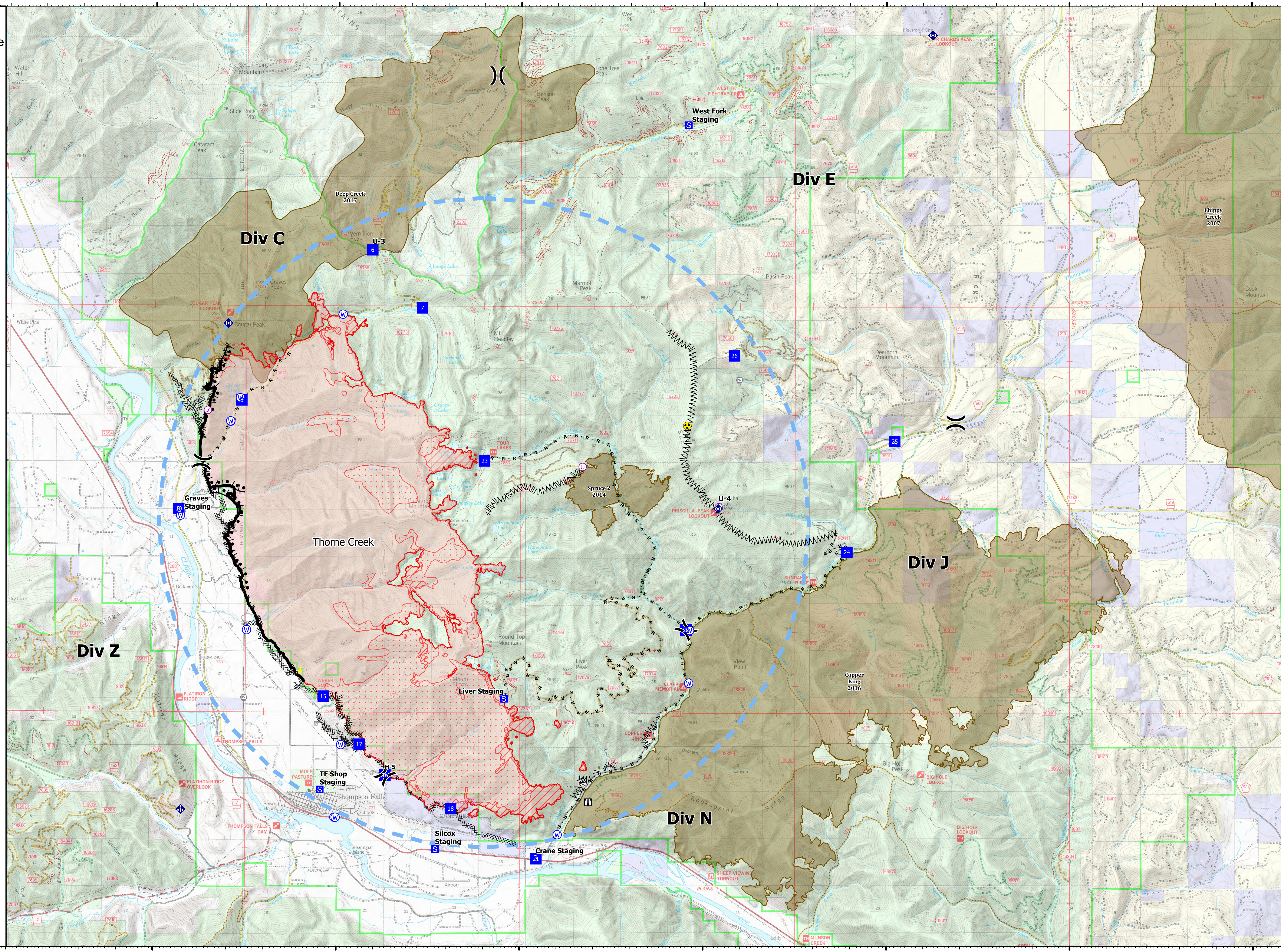
Type	Label	Latitude	Longitude
Water Source	W-1	47° 41.117' N 115° 24.280' W	
Water Development or Draft Site	W-2	47° 42.859' N 115° 22.925' W	
Water Source	W-3	47° 44.839' N 115° 19.867' W	
Water Source	W-4	47° 43.857' N 115° 22.925' W	
Water Source	W-5	47° 35.247' N 115° 13.972' W	
Water Source	W-6	47° 59.021' N 115° 10.373' W	
Water Source	W-7	47° 35.556' N 115° 20.564' W	
Water Source	W-8	47° 39.009' N 115° 22.471' W	
Water Source	W-9	47° 36.890' N 115° 19.888' W	
Hazard	H-1	47° 42.786' N 115° 10.449' W	
Water Source	W-10	47° 43.200' N 115° 22.667' W	
Water Source	W-11	47° 42.862' N 115° 22.930' W	
Check Point	C-1	47° 43.061' N 115° 23.554' W	
Water Source	W-12	47° 35.504' N 115° 20.507' W	
Water Source	W-13	47° 38.049' N 115° 10.394' W	
Unimproved Landing Area	U-1	47° 42.020' N 115° 13.307' W	
Drop Point	D-1	47° 41.239' N 115° 24.335' W	
Drop Point	D-2	15 47° 37.789' N 115° 20.369' W	
Drop Point	D-3	16 47° 36.338' N 115° 18.675' W	
Drop Point	D-4	17 47° 36.900' N 115° 19.383' W	
Drop Point	D-5	18 47° 35.732' N 115° 16.879' W	
Drop Point	D-6	21 47° 34.801' N 115° 14.549' W	
Drop Point	D-7	22 47° 39.009' N 115° 20.507' W	
Drop Point	D-8	23 47° 42.141' N 115° 15.984' W	
Drop Point	D-9	24 47° 40.469' N 115° 06.079' W	
Drop Point	D-10	25 47° 42.515' N 115° 04.750' W	
Drop Point	D-11	26 47° 44.091' N 115° 09.160' W	
Drop Point	D-12	6 47° 46.028' N 115° 19.064' W	
Drop Point	D-13	7 47° 44.200' N 115° 17.059' W	
Drop Point	D-14	8 47° 43.248' N 115° 22.627' W	
Helispot	H-5	47° 36.338' N 115° 18.675' W	
Unimproved Landing Area	U-3	47° 46.028' N 115° 19.064' W	
Unimproved Landing Area	U-4	47° 41.238' N 115° 09.587' W	



0 1 2 Miles

Created by: SA Gold Team
8/15/2021 2050

North American 1983 Datum, Lat/Long Grid



115°30'W

115°25'W

115°20'W

115°15'W

115°10'W

115°5'W

115°W

114°55'W

47°45'N

47°40'N

47°35'N

47°45'N

47°40'N

47°35'N