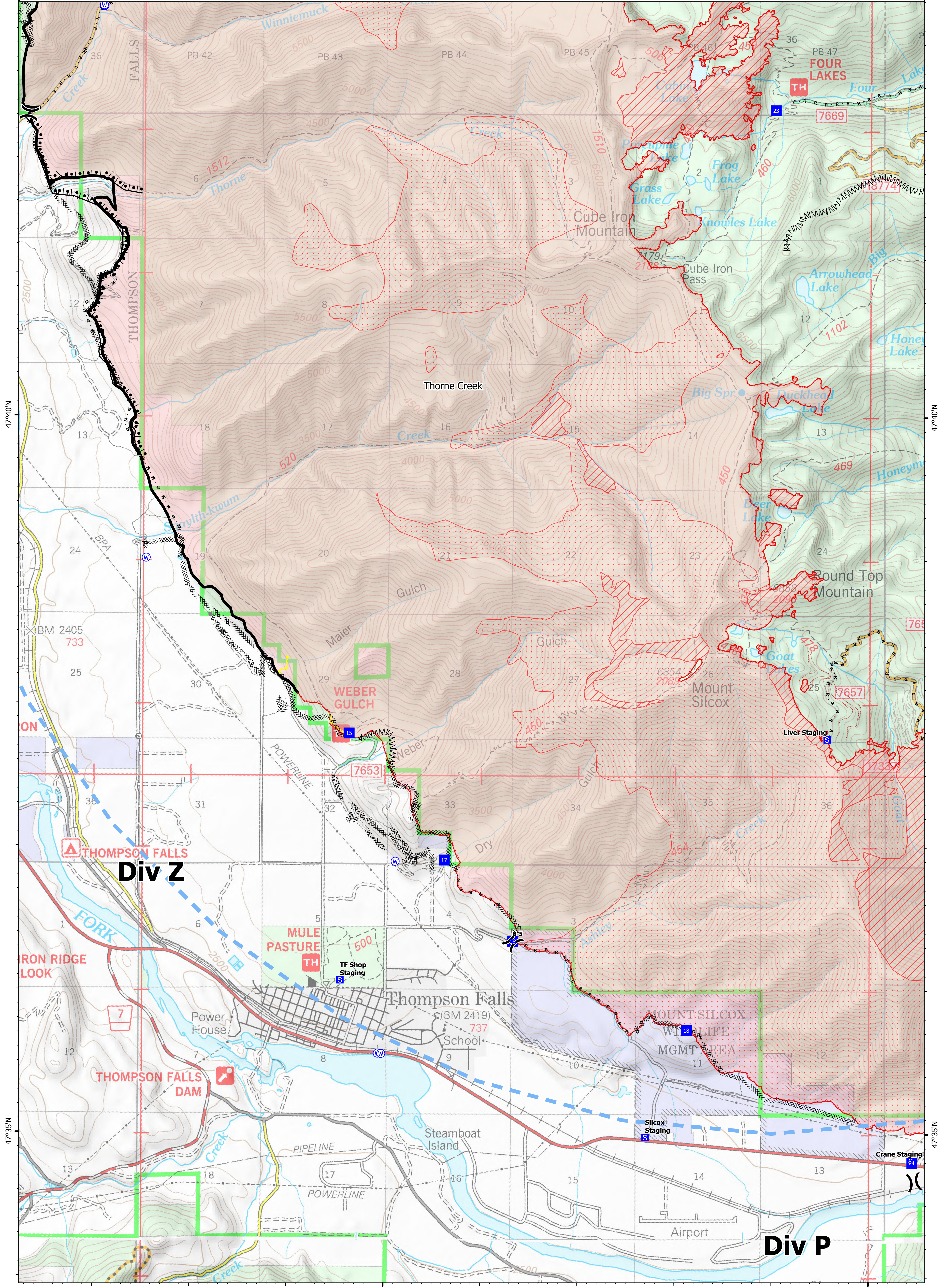
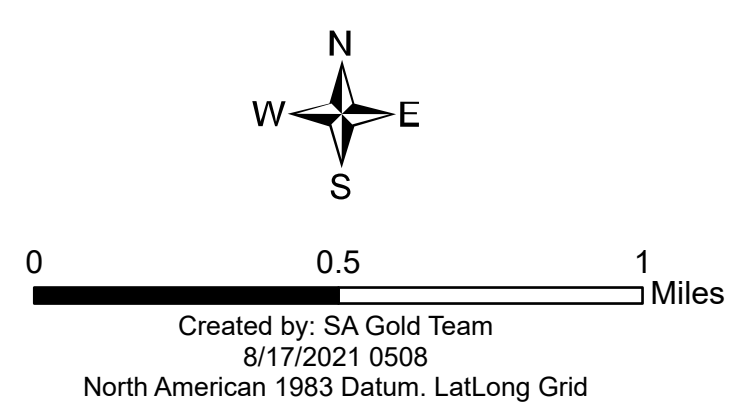




**Ops Map**  
 West Lolo Complex - Div P/Z  
 MT-LNF-000893  
 8/17/2021 Day  
 35943 acres at 8/16/21 @ 2300

- Check Point
- Helispot
- ⌋ Division Break
- Drop Point
- Staging Area
- Other
- Gate
- Water Source
- ⊗ Completed Burnout
- ⊗ Completed Dozer Line
- ⊗ Completed Fuel Break
- ⊗ Completed Hand Line
- M - Completed Mixed Construction Line
- R - Completed Road as Line
- Access or Improved Road
- ⚡ Incident Action Point
- ⚡ Temporary Flight Restriction
- Fire Edge
- Contained Line
- IR Intense Heat
- IR Scattered Heat
- Wildfire Daily Fire Perimeter
- Fire History

Type	Label	Latitude	Longitude	
Water Development or Draft Site		47° 42.855' N	115° 22.925' W	
Water Source		47° 35.550' N	115° 20.054' W	
Water Source		47° 39.800' N	115° 24.071' W	
Water Source		47° 36.895' N	115° 19.888' W	
Water Source		47° 43.200' N	115° 22.667' W	
Water Source		47° 42.800' N	115° 23.000' W	
Check Point		47° 43.061' N	115° 23.554' W	
Water Source		47° 35.554' N	115° 20.029' W	
Drop Point		47° 37.700' N	115° 20.360' W	
Drop Point		16	47° 36.338' N	115° 18.675' W
Drop Point		17	47° 36.905' N	115° 19.383' W
Drop Point		18	47° 35.572' N	115° 16.870' W
Drop Point		21	47° 34.801' N	115° 14.549' W
Drop Point		23	47° 42.141' N	115° 15.584' W
Drop Point		8	47° 43.200' N	115° 22.667' W
Helispot	H-5	47° 36.338' N	115° 18.675' W	



115°20'W

115°15'W

47°40'N

47°40'N

47°35'N

47°35'N