

Ops Map

West Lolo Complex - Thorne
MT-LNF-000893
8/18/2021 Day
38688 acres at 8/17/21 @ 1600



- Check Point
- Helispot
- Unimproved Landing Area
- ⌋ Division Break
- Drop Point
- Closure
- Staging Area
- Lookout
- Other
- Gate
- ◆ Mobile Weather Unit
- ◆ Repeater
- ◆ Hazard
- ◆ Water Source
- ⊗ Completed Burnout
- ⊗ Completed Dozer Line
- ⊗ Completed Fuel Break
- ⊗ Completed Hand Line
- ⊗ Completed Mixed Construction Line
- ⊗ Completed Road as Line
- Access or Improved Road
- ⊗ Incident Action Point
- ⊗ Temporary Flight Restriction
- Fire Edge
- Contained Line
- IR Intense Heat
- IR Scattered Heat
- Wildfire Daily Fire Perimeter
- Fire History

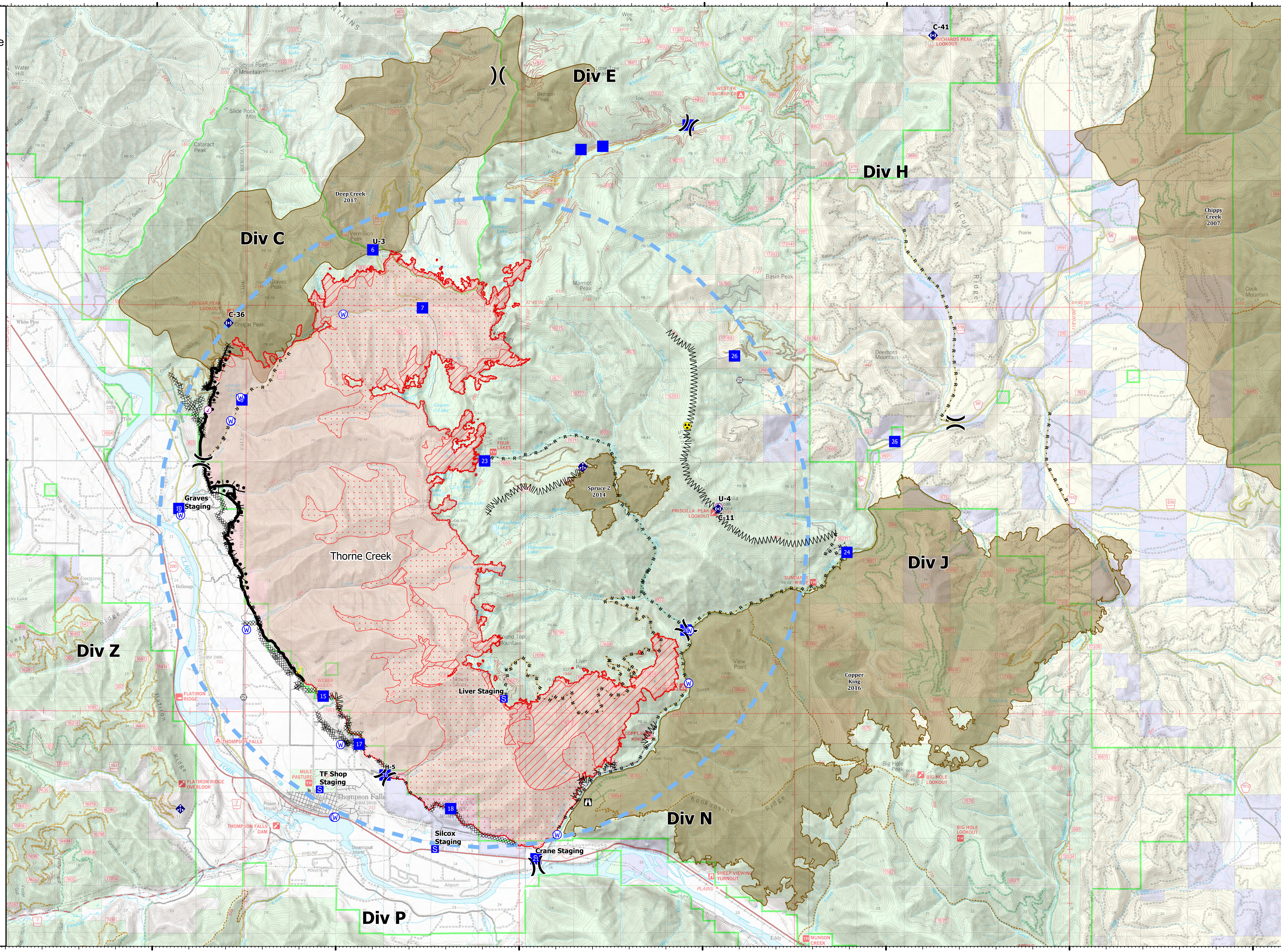
Type	Label	Latitude	Longitude
Water Source		47° 41.117' N 115° 34.288' W	
Water Development or Draft Site		47° 42.859' N 115° 22.925' W	
Water Source		47° 44.839' N 115° 19.867' W	
Water Source		47° 43.859' N 115° 20.202' W	
Water Source		47° 35.249' N 115° 13.972' W	
Water Source		47° 39.021' N 115° 10.373' W	
Water Source		47° 35.509' N 115° 20.068' W	
Water Source		47° 39.009' N 115° 22.471' W	
Water Source		47° 36.892' N 115° 19.888' W	
Hazard		47° 42.798' N 115° 18.498' W	
Water Source		47° 43.290' N 115° 22.667' W	
Water Source		47° 42.862' N 115° 22.992' W	
Check Point		47° 41.061' N 115° 23.559' W	
Water Source		47° 35.554' N 115° 20.029' W	
Water Source		47° 38.049' N 115° 10.394' W	
Water Source		47° 42.030' N 115° 13.309' W	
Unimproved Landing Area		47° 48.349' N 115° 10.441' W	
Drop Point		47° 47.897' N 115° 13.370' W	
Drop Point		47° 47.959' N 115° 13.279' W	
Drop Point	10	47° 41.239' N 115° 24.335' W	
Drop Point	15	47° 37.789' N 115° 20.369' W	
Drop Point	16	47° 36.339' N 115° 18.679' W	
Drop Point	17	47° 36.909' N 115° 19.383' W	
Drop Point	18	47° 35.722' N 115° 16.879' W	
Drop Point	21	47° 34.801' N 115° 15.549' W	
Drop Point	22	47° 39.030' N 115° 10.472' W	
Drop Point	23	47° 42.141' N 115° 15.984' W	
Drop Point	24	47° 46.469' N 115° 08.679' W	
Drop Point	25	47° 42.515' N 115° 04.775' W	
Drop Point	26	47° 44.091' N 115° 09.150' W	
Drop Point	6	47° 46.029' N 115° 18.968' W	
Drop Point	7	47° 44.961' N 115° 17.689' W	
Drop Point	8	47° 43.248' N 115° 22.627' W	



0 1 2 Miles

Created by: SA Gold Team
8/17/2021 2049

North American 1983 Datum, Lat/Long Grid



47°50'N
47°45'N
47°40'N
47°35'N

115°30'W
115°25'W
115°20'W
115°15'W
115°10'W
115°5'W
115°W
114°55'W