

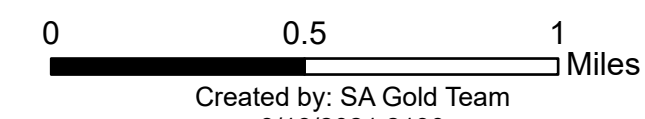


# Ops Map

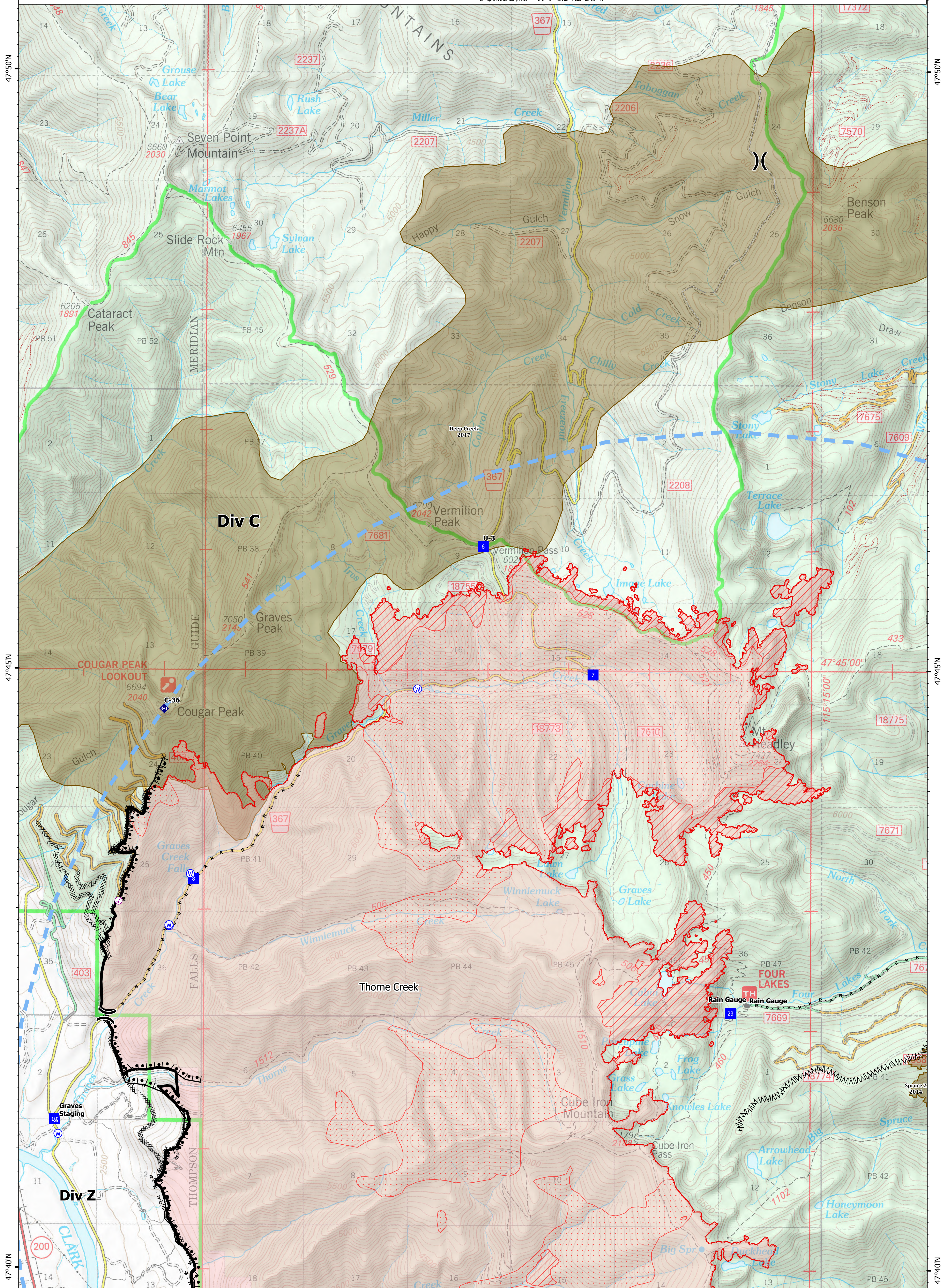
West Lolo Complex - Div C  
 MT-LNF-000893  
 8/19/2021 Day  
 38688 acres at 8/17/21 @ 1600

- Check Point
- Unimproved Landing Area
- ⌘ Division Break
- Drop Point
- Staging Area
- Other
- Bridge
- Repeater
- Water Source
- ⊗ Completed Burnout
- ⊗ Completed Dozer Line
- ⊗ Completed Fuel Break
- Completed Hand Line
- Completed Mixed Construction Line
- Completed Road as Line
- Access or Improved Road
- Temporary Flight Restriction
- Fire Edge
- Contained Line
- IR Intense Heat
- IR Scattered Heat
- Wildfire Daily Fire Perimeter
- Fire History

Type	Label	Latitude	Longitude
Water Source	47° 41.117' N 115° 24.288' W	47° 41.117' N 115° 24.288' W	
Water Development or Draft Site	47° 42.859' N 115° 22.925' W	47° 42.859' N 115° 22.925' W	
Water Source	47° 44.839' N 115° 19.867' W	47° 44.839' N 115° 19.867' W	
Water Source	47° 42.855' N 115° 22.925' W	47° 42.855' N 115° 22.925' W	
Water Source	47° 43.390' N 115° 22.667' W	47° 43.390' N 115° 22.667' W	
Water Source	47° 42.862' N 115° 22.930' W	47° 42.862' N 115° 22.930' W	
Check Point	47° 43.061' N 115° 23.554' W	47° 43.061' N 115° 23.554' W	
Drop Point	10 47° 41.239' N 115° 24.335' W	47° 41.239' N 115° 24.335' W	
Drop Point	23 47° 42.141' N 115° 15.984' W	47° 42.141' N 115° 15.984' W	
Drop Point	6 47° 46.028' N 115° 19.064' W	47° 46.028' N 115° 19.064' W	
Drop Point	7 47° 44.361' N 115° 17.699' W	47° 44.361' N 115° 17.699' W	
Drop Point	8 47° 43.248' N 115° 22.627' W	47° 43.248' N 115° 22.627' W	
Drop Point	U-3 47° 46.029' N 115° 19.064' W	47° 46.029' N 115° 19.064' W	



Created by: SA Gold Team  
 8/18/2021 2130  
 North American 1983 Datum, Lat,Long Grid



47°50'N

47°45'N

47°40'N

47°50'N

47°45'N

47°40'N

47°50'N

47°45'N

47°40'N

115°20'W

115°15'W

115°10'W

115°20'W

115°15'W

115°10'W

115°20'W

115°15'W