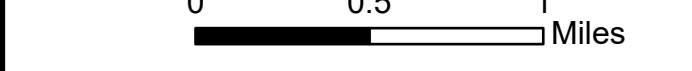


**Ops Map**  
 West Lolo Complex - Div E  
 MT-LNF-000893  
 8/19/2021 Day  
 38688 acres at 8/17/21 @ 1600



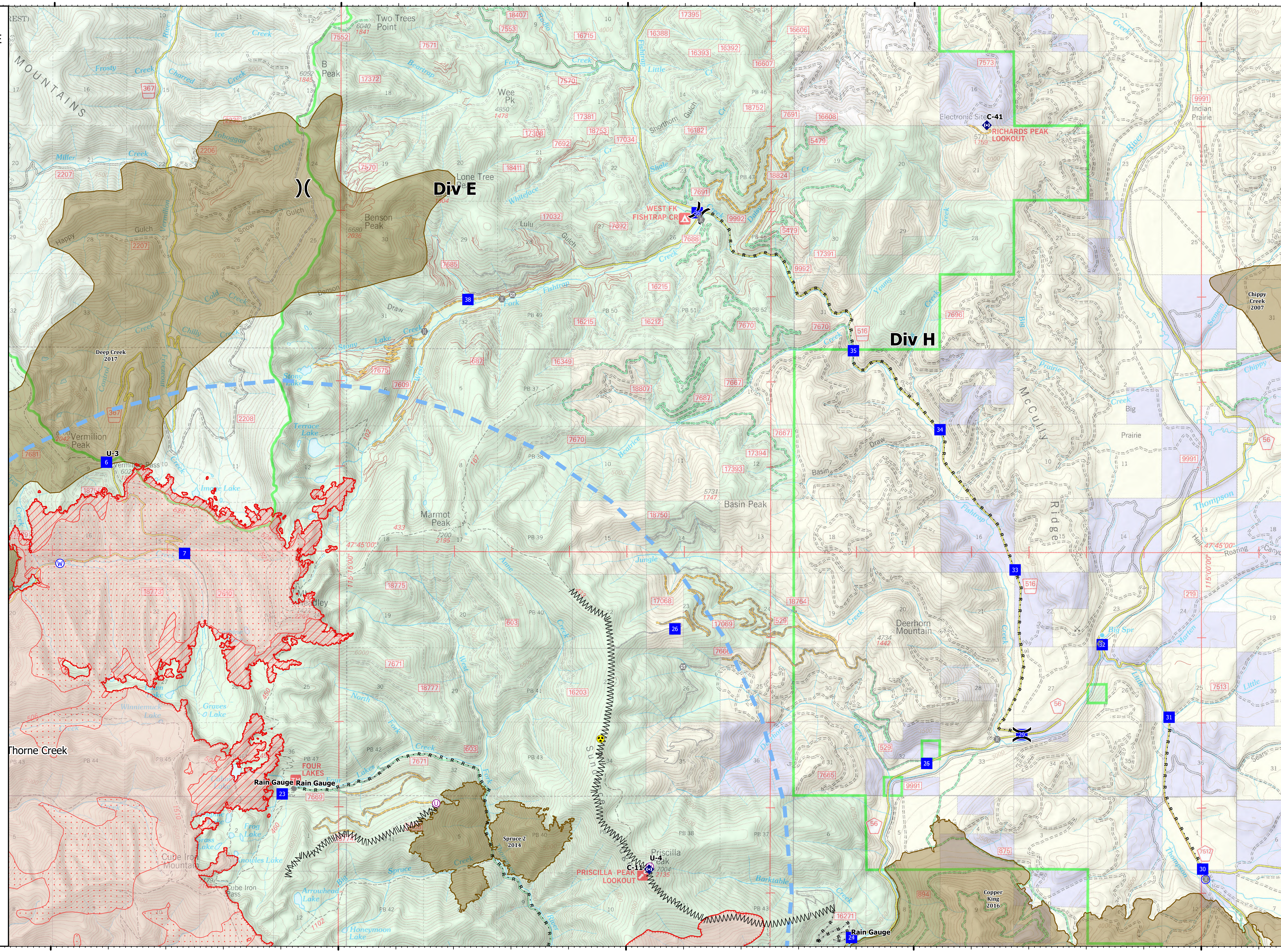
- Check Point
- Unimproved Landing Area
- Division Break
- Drop Point
- Closure
- Other
- Gate
- Bridge
- Repeater
- Hazard
- Water Source
- Completed Burnout
- Completed Dozer Line
- Completed Fuel Break
- Completed Hand Line
- Completed Mixed Construction Line
- Completed Road as Line
- Access or Improved Road
- Temporary Flight Restriction
- Fire Edge
- Contained Line
- IR Intense Heat
- IR Scattered Heat
- Wildfire Daily Fire Perimeter
- Fire History

Type	Label	Latitude	Longitude
Water Development or Draft Site		47° 42.859' N 115° 22.925' W	
Water Source		47° 44.839' N 115° 19.867' W	
Water Source		47° 42.855' N 115° 22.925' W	
Hazard		47° 42.798' N 115° 10.449' W	
Water Source		47° 43.290' N 115° 22.667' W	
Water Source		47° 42.855' N 115° 22.920' W	
Unimproved Landing Area		47° 42.035' N 115° 13.307' W	
Water Source		47° 41.155' N 114° 59.923' W	
Drop Point	23	47° 42.141' N 115° 15.984' W	
Drop Point	24	47° 40.469' N 115° 06.079' W	
Drop Point	25	47° 42.515' N 115° 04.775' W	
Drop Point	26	47° 44.091' N 115° 09.160' W	
Drop Point	29	47° 42.855' N 115° 03.121' W	
Drop Point	30	47° 41.276' N 114° 59.975' W	
Drop Point	31	47° 43.060' N 115° 00.559' W	
Drop Point	32	47° 43.912' N 115° 01.723' W	
Drop Point	34	47° 44.790' N 115° 03.241' W	
Drop Point	44	47° 46.435' N 115° 04.550' W	
Drop Point	47	47° 47.361' N 115° 06.060' W	
Drop Point	48	47° 45.979' N 115° 08.786' W	
Drop Point	30	47° 47.954' N 115° 12.778' W	
Drop Point	5	47° 46.028' N 115° 19.064' W	
Drop Point	8	47° 44.961' N 115° 17.699' W	
Drop Point	8	47° 43.248' N 115° 22.627' W	
Unimproved Landing Area	U-3	47° 46.029' N 115° 19.064' W	
Unimproved Landing Area	U-4	47° 41.298' N 115° 09.587' W	



Created by: SA Gold Team  
 8/18/2021 2138

North American 1983 Datum, Lat/Long Grid



115°20'W 115°15'W 115°10'W 115°5'W 115°W