



Ops Map

West Lolo Complex - Div J
 MT-LNF-000893
 8/19/2021 Day
 38688 acres at 8/17/21 @ 1600

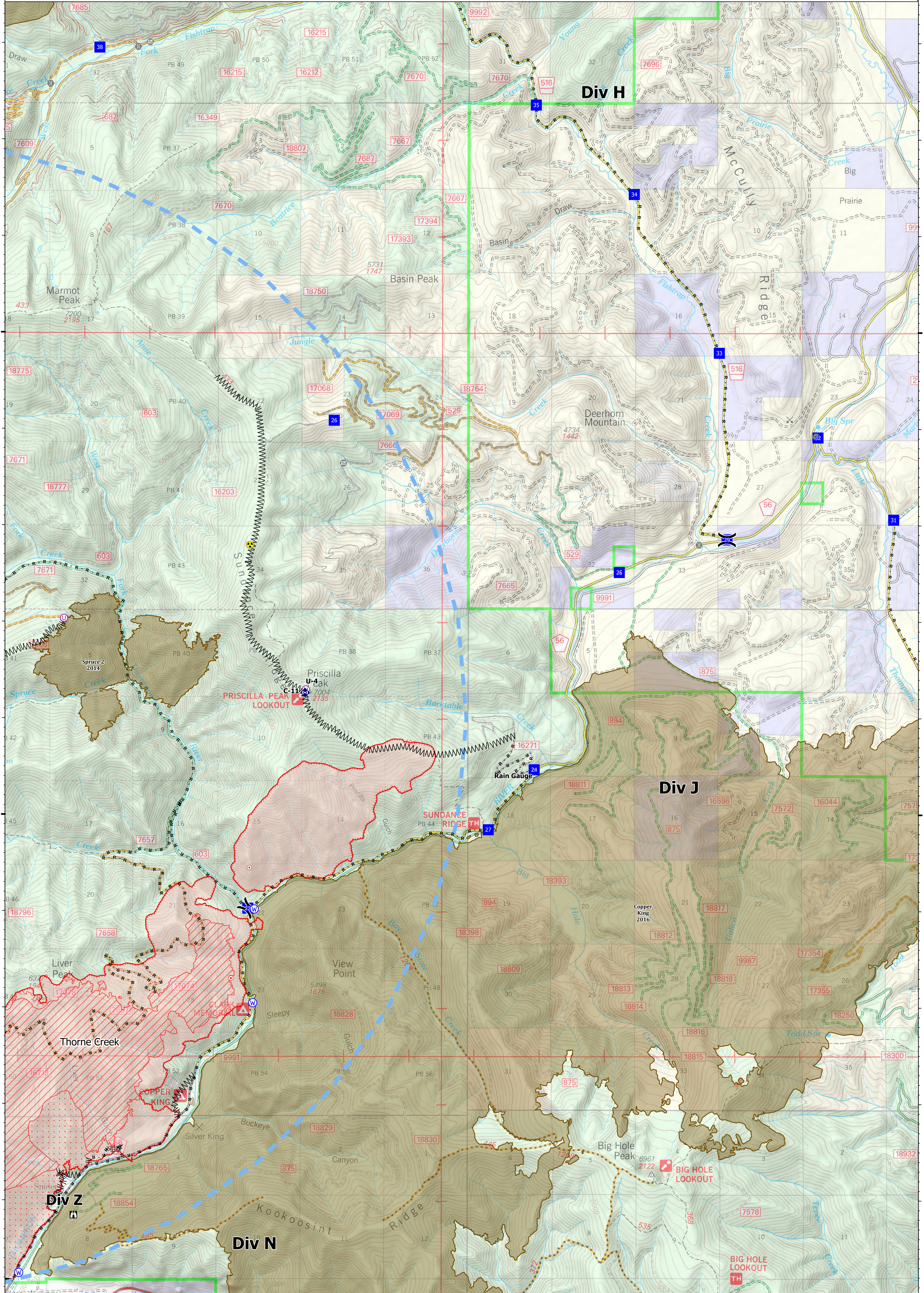
- Unimproved Landing Area
- Division Break
- Drop Point
- Closure
- Lookout
- Hot Spot - Spot Fire
- Other
- Gate
- Bridge
- Repeater
- Hazard
- Water Source
- Completed Deater Line
- Completed Fuel Break
- Completed Hand Line
- Completed Road as Line
- Access or Improved Road
- Temporary Flight Restriction
- Fire Edge
- Contained Line
- IR Intense Heat
- IR Scattered Heat
- Wildfire Daily Fire Perimeter
- Fire History

Type	Label	Latitude	Longitude
Water Source	47° 35.247' N 115° 13.972' W		
Water Source	47° 39.021' N 115° 10.377' W		
Hazard	47° 42.798' N 115° 10.449' W		
Water Source	47° 38.049' N 115° 10.394' W		
Water Source	47° 42.035' N 115° 12.307' W		
Unimproved Landing Area	47° 42.515' N 115° 04.775' W		
Drop Point	22 47° 39.030' N 115° 10.472' W		
Drop Point	24 47° 40.469' N 115° 06.079' W		
Drop Point	25 47° 42.515' N 115° 04.775' W		
Drop Point	26 47° 44.091' N 115° 09.160' W		
Drop Point	27 47° 39.847' N 115° 06.783' W		
Drop Point	28 47° 42.855' N 115° 03.321' W		
Drop Point	29 47° 43.900' N 115° 00.559' W		
Drop Point	31 47° 43.900' N 115° 00.559' W		
Drop Point	32 47° 43.912' N 115° 01.723' W		
Drop Point	33 47° 44.798' N 115° 03.241' W		
Drop Point	34 47° 46.435' N 115° 04.550' W		
Drop Point	35 47° 47.351' N 115° 06.060' W		
Drop Point	36 47° 48.079' N 115° 06.786' W		



0 0.75 1.5 Miles

Created by: SA Gold Team
 8/18/2021 2130
 North American 1983 Datum, Lat/Long Grid



115°10'W

115°5'W

47°45'N

47°45'N

47°40'N

47°40'N