

115°25'W

115°20'W



Ops Map
 West Lolo Complex - Div Z
 MT-LNF-000893
 8/19/2021 Day
 38688 acres at 8/17/21 @ 1600

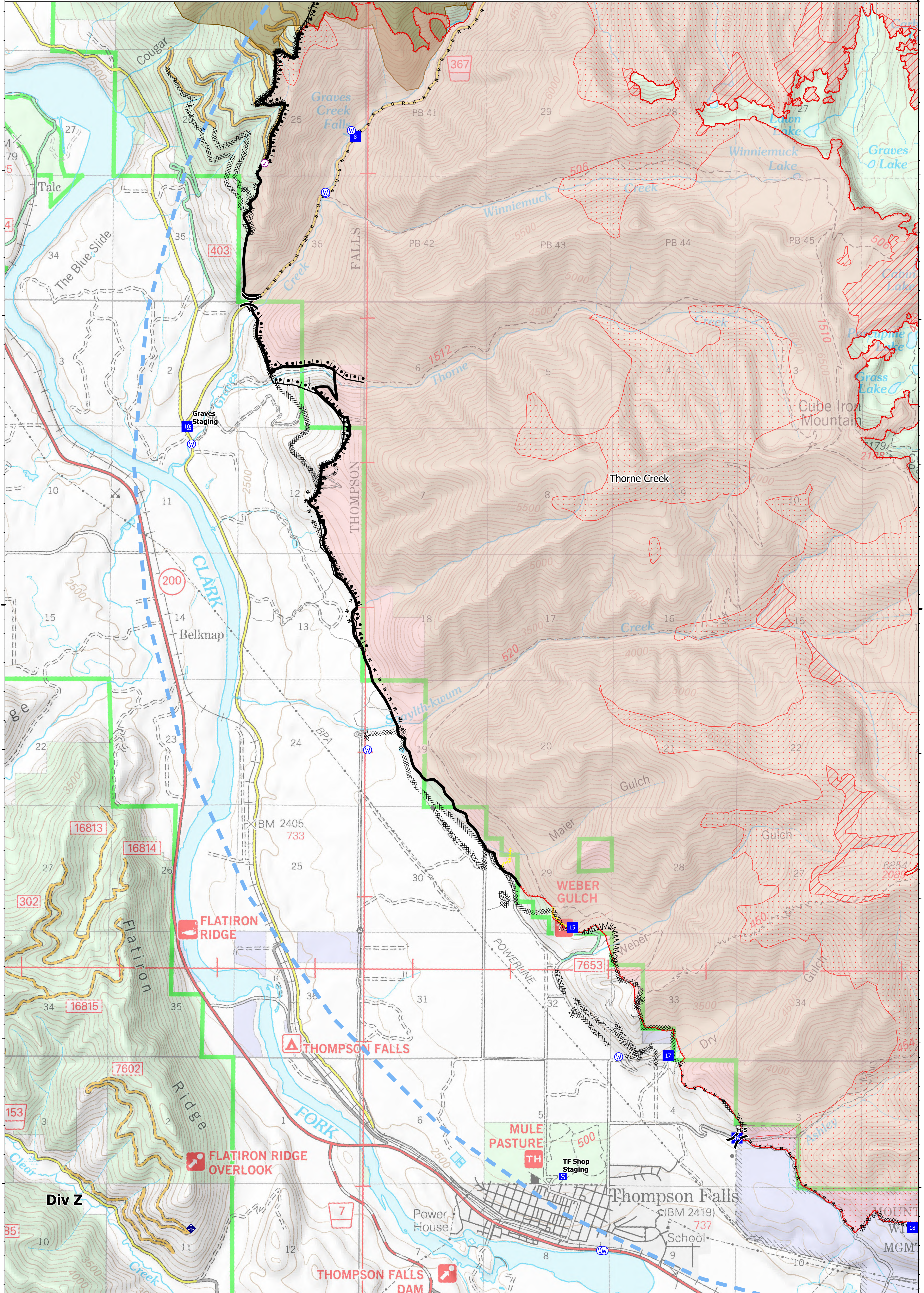
- Check Point
- Helispot
- ⌘ Division Break
- ⊕ Drop Point
- ⊖ Staging Area
- ⊙ Other
- ⊕ Gate
- ⊕ Mobile Weather Unit
- ⊕ Repeater
- ⊕ Water Source
- ⊕ Completed Burnout
- ⊕ Completed Dozer Line
- ⊕ Completed Fuel Break
- H - Completed Hand Line
- M - Completed Mixed Construction Line
- R - Completed Road as Line
- Access or Improved Road
- ⚡ Incident Action Point
- ⚡ Temporary Flight Restriction
- Fire Edge
- Contained Line
- ⚡ IR Intense Heat
- ⚡ IR Scattered Heat
- ⚡ Wildfire Daily Fire Perimeter
- Fire History

Type	Label	Latitude	Longitude
Water Source		47° 41.117' N 115° 24.288' W	
Water Development or Draft Site		47° 44.839' N 115° 23.925' W	
Water Source		47° 44.839' N 115° 19.867' W	
Water Source		47° 42.855' N 115° 23.925' W	
Water Source		47° 38.556' N 115° 20.564' W	
Water Source		47° 39.009' N 115° 22.471' W	
Water Source		47° 36.895' N 115° 19.888' W	
Water Source		47° 43.299' N 115° 23.663' W	
Water Source		47° 42.862' N 115° 23.554' W	
Water Source		47° 38.554' N 115° 20.029' W	
Drop Point		10 47° 41.239' N 115° 24.335' W	
Drop Point		15 47° 37.789' N 115° 20.369' W	
Drop Point		16 47° 36.338' N 115° 18.679' W	
Drop Point		17 47° 36.965' N 115° 18.383' W	
Drop Point		18 47° 35.722' N 115° 18.879' W	
Drop Point		8 47° 43.248' N 115° 23.627' W	



0 0.5 1 Miles

Created by: SA Gold Team
 8/18/2021 2130
 North American 1983 Datum, Lat,Long Grid



115°25'W

115°20'W

47°40'N

47°40'N