

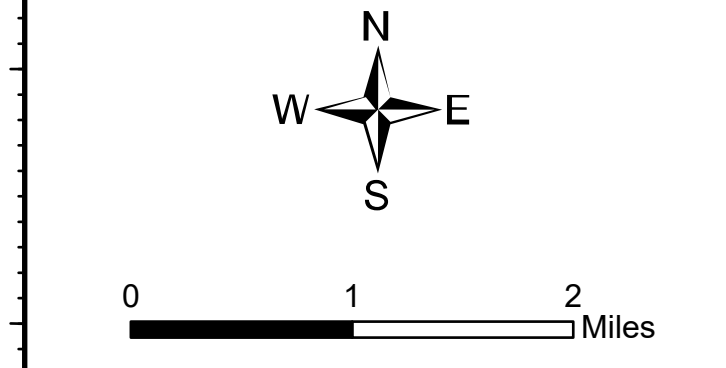
Ops Map

West Lolo Complex - Thorne
 MT-LNF-000893
 8/19/2021 Day
 38688 acres at 8/17/21 @ 1600

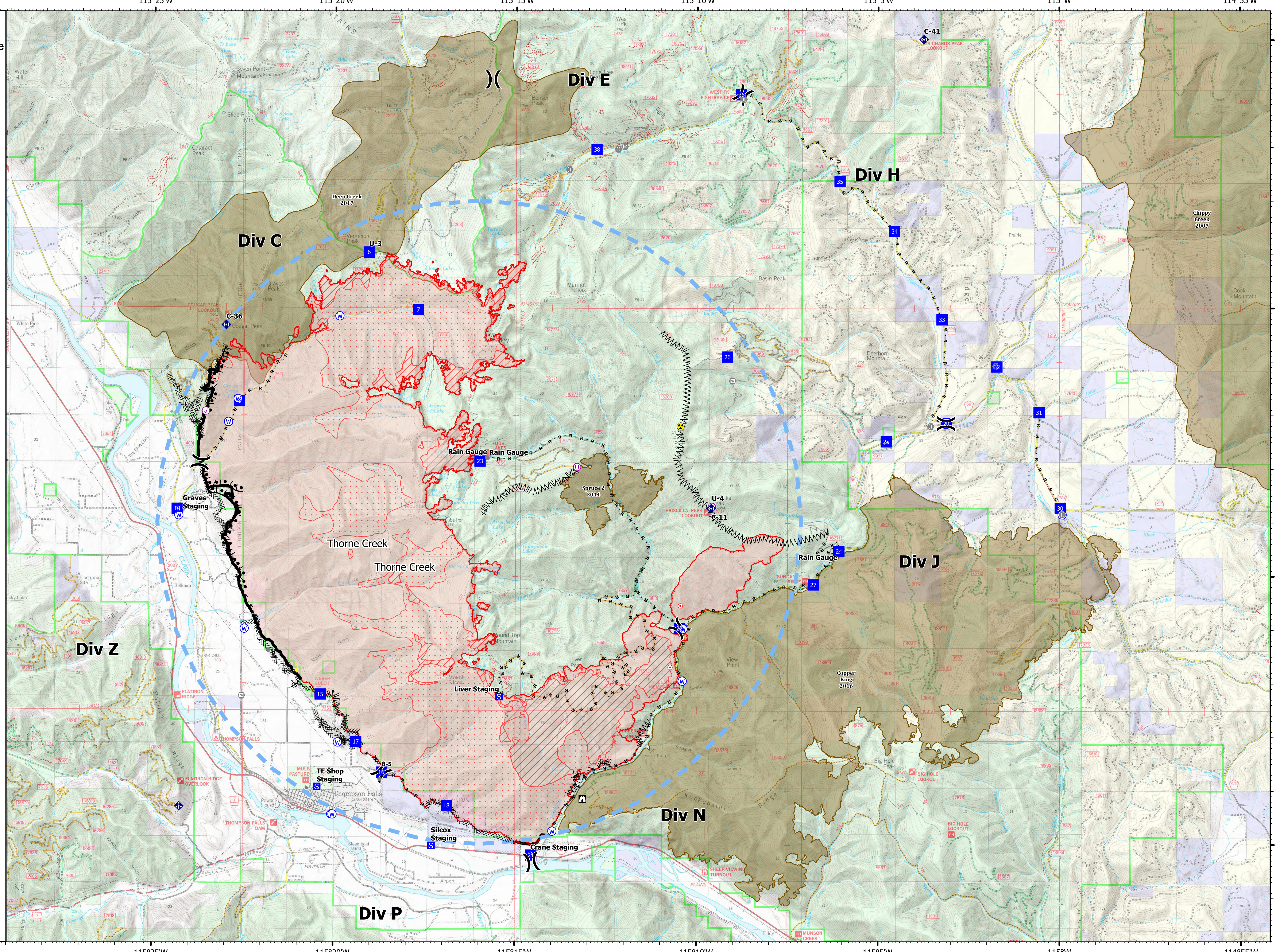


- Check Point
- Helispot
- Unimproved Landing Area
- ⌋ Division Break
- Drop Point
- ⊠ Closure
- ⊠ Staging Area
- ⊠ Lookout
- Hot Spot - Spot Fire
- Other
- Gate
- Bridge
- Mobile Weather Unit
- Repeater
- Hazard
- Water Source
- Completed Burnout
- ⊠ Completed Dozer Line
- ⊠ Completed Fuel Break
- ⊠ Completed Hand Line
- ⊠ Completed Mixed Construction Line
- ⊠ Completed Road as Line
- ⊠ Access or Improved Road
- ⊠ Incident Action Point
- ⊠ Temporary Flight Restriction
- ⊠ Fire Edge
- ⊠ Contained Line
- ⊠ IR Intense Heat
- ⊠ IR Scattered Heat
- ⊠ Wildfire Daily Fire Perimeter
- ⊠ Fire History

Type	Label	Latitude	Longitude
Water Source		47° 41.137' N	115° 24.288' W
Water Development or Draft Site		47° 42.859' N	115° 22.925' W
Water Source		47° 44.839' N	115° 19.867' W
Water Source		47° 42.855' N	115° 22.925' W
Water Source		47° 35.247' N	115° 13.972' W
Water Source		47° 39.021' N	115° 10.373' W
Water Source		47° 35.556' N	115° 20.064' W
Water Source		47° 39.009' N	115° 22.471' W
Water Source		47° 36.895' N	115° 19.888' W
Water Source		47° 42.798' N	115° 10.448' W
Water Source		47° 43.290' N	115° 22.667' W
Water Source		47° 42.862' N	115° 22.930' W
Check Point		47° 43.061' N	115° 23.554' W
Water Source		47° 35.554' N	115° 20.029' W
Water Source		47° 38.949' N	115° 10.394' W
Unimproved Landing Area		47° 42.035' N	115° 13.307' W
Water Source		47° 41.155' N	114° 59.923' W
Drop Point	10	47° 41.239' N	115° 24.335' W
Drop Point	15	47° 37.789' N	115° 20.369' W
Drop Point	16	47° 36.338' N	115° 18.675' W
Drop Point	17	47° 36.905' N	115° 19.383' W
Drop Point	18	47° 35.722' N	115° 16.879' W
Drop Point	21	47° 34.801' N	115° 14.549' W
Drop Point	22	47° 39.030' N	115° 10.472' W
Drop Point	23	47° 42.141' N	115° 15.984' W
Drop Point	24	47° 40.469' N	115° 06.079' W
Drop Point	25	47° 42.515' N	115° 04.775' W
Drop Point	26	47° 44.991' N	115° 09.307' W
Drop Point	27	47° 39.847' N	115° 06.783' W
Drop Point	29	47° 42.855' N	115° 03.121' W
Drop Point	30	47° 41.276' N	114° 59.975' W
Drop Point	31	47° 43.860' N	115° 00.559' W
Drop Point	32	47° 43.912' N	115° 01.723' W
Drop Point	33	47° 44.790' N	115° 03.241' W
Drop Point	34	47° 46.435' N	115° 04.550' W
Drop Point	35	47° 47.361' N	115° 06.060' W
Drop Point	36	47° 48.979' N	115° 08.798' W
Drop Point	38	47° 47.954' N	115° 12.778' W
Drop Point	6	47° 46.028' N	115° 19.064' W
Drop Point	7	47° 44.561' N	115° 17.699' W
Drop Point	8	47° 43.246' N	115° 22.622' W
Helispot	H-5	47° 36.338' N	115° 18.675' W
Unimproved Landing Area	U-3	47° 46.029' N	115° 19.064' W
Unimproved Landing Area	U-4	47° 41.288' N	115° 09.587' W



Created by: SA Gold Team
 8/18/2021 2119
 North American 1983 Datum, Lat/Long Grid



47°50'N
47°45'N
47°40'N
47°35'N

115°30'W
115°25'W
115°20'W
115°15'W
115°10'W
115°5'W
115°W
114°55'W