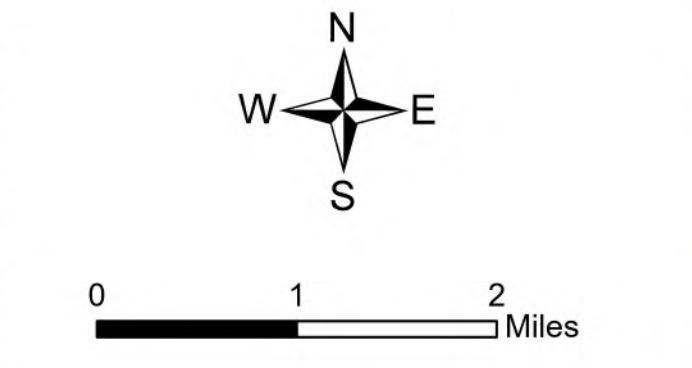


**MAP Map**  
 West Lolo Complex - Thorne  
 MT-LNF-000893  
 8/20/2021 Day  
 38688 acres at 8/17/21 @ 1600

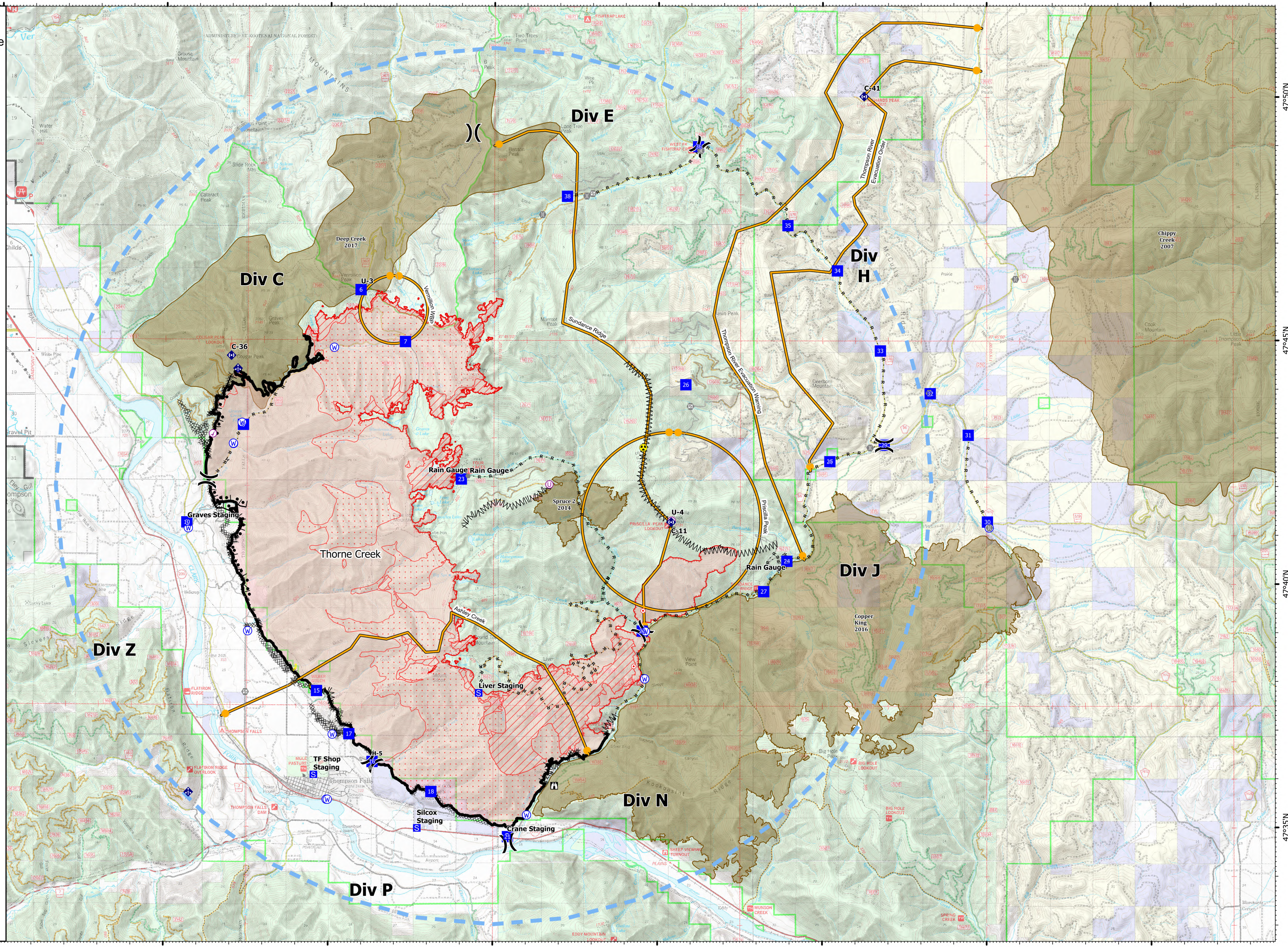


- Check Point
- Helispot
- Unimproved Landing Area
- X Division Break
- Drop Point
- Closure
- Staging Area
- Lookout
- Hot Spot - Spot Fire
- Other
- Gate
- Bridge
- Mobile Weather Unit
- Repeater
- Hazard
- Water Source
- Completed Burnout
- Completed Dozer Line
- Completed Fuel Break
- Completed Hand Line
- Completed Mixed Construction Line
- Completed Road as Line
- Access or Improved Road
- Management Action Point
- Incident Action Point
- Temporary Flight Restriction
- Fire Edge
- Contained Line
- IR Intense Heat
- IR Scattered Heat
- Wildfire Daily Fire Perimeter
- Fire History

| Type                    | Label | Latitude                        | Longitude |
|-------------------------|-------|---------------------------------|-----------|
| Water Source            |       | 47° 41.117' N 115° 24.288' W    |           |
| Water Source            |       | 47° 42.859' N 115° 22.925' W    |           |
| Water Source            |       | 47° 44.839' N 115° 19.867' W    |           |
| Water Source            |       | 47° 48.809' N 115° 20.209' W    |           |
| Water Source            |       | 47° 35.247' N 115° 13.972' W    |           |
| Water Source            |       | 47° 39.021' N 115° 10.373' W    |           |
| Water Source            |       | 47° 35.509' N 115° 10.066' W    |           |
| Water Source            |       | 47° 39.009' N 115° 22.471' W    |           |
| Water Source            |       | 47° 36.892' N 115° 19.888' W    |           |
| Hazard                  |       | 47° 42.798' N 115° 10.449' W    |           |
| Water Source            |       | 47° 43.290' N 115° 22.667' W    |           |
| Water Source            |       | 47° 42.862' N 115° 22.930' W    |           |
| Check Point             |       | 47° 43.061' N 115° 23.559' W    |           |
| Water Source            |       | 47° 35.558' N 115° 20.029' W    |           |
| Water Source            |       | 47° 38.049' N 115° 10.394' W    |           |
| Unimproved Landing Area |       | 47° 42.029' N 115° 13.309' W    |           |
| Water Source            |       | 47° 41.150' N 114° 59.923' W    |           |
| Drop Point              |       | 10 47° 41.239' N 115° 24.330' W |           |
| Drop Point              |       | 15 47° 37.989' N 115° 20.368' W |           |
| Drop Point              |       | 16 47° 36.338' N 115° 18.675' W |           |
| Drop Point              |       | 17 47° 36.902' N 115° 19.382' W |           |
| Drop Point              |       | 18 47° 35.722' N 115° 16.879' W |           |
| Drop Point              |       | 21 47° 34.801' N 115° 14.549' W |           |
| Drop Point              |       | 22 47° 39.030' N 115° 10.472' W |           |
| Drop Point              |       | 23 47° 42.141' N 115° 15.969' W |           |
| Drop Point              |       | 24 47° 40.469' N 115° 06.079' W |           |
| Drop Point              |       | 25 47° 42.535' N 115° 04.775' W |           |
| Drop Point              |       | 26 47° 44.091' N 115° 09.149' W |           |
| Drop Point              |       | 27 47° 39.847' N 115° 06.783' W |           |
| Drop Point              |       | 29 47° 42.855' N 115° 03.121' W |           |
| Drop Point              |       | 30 47° 41.239' N 115° 09.879' W |           |
| Drop Point              |       | 31 47° 43.060' N 115° 00.559' W |           |
| Drop Point              |       | 32 47° 43.912' N 115° 01.723' W |           |



Created by: SA Gold Team  
 8/20/2021 0631  
 North American 1983 Datum, Lat/Long Grid



115°30'W 115°25'W 115°20'W 115°15'W 115°10'W 115°5'W 115°W 114°55'W