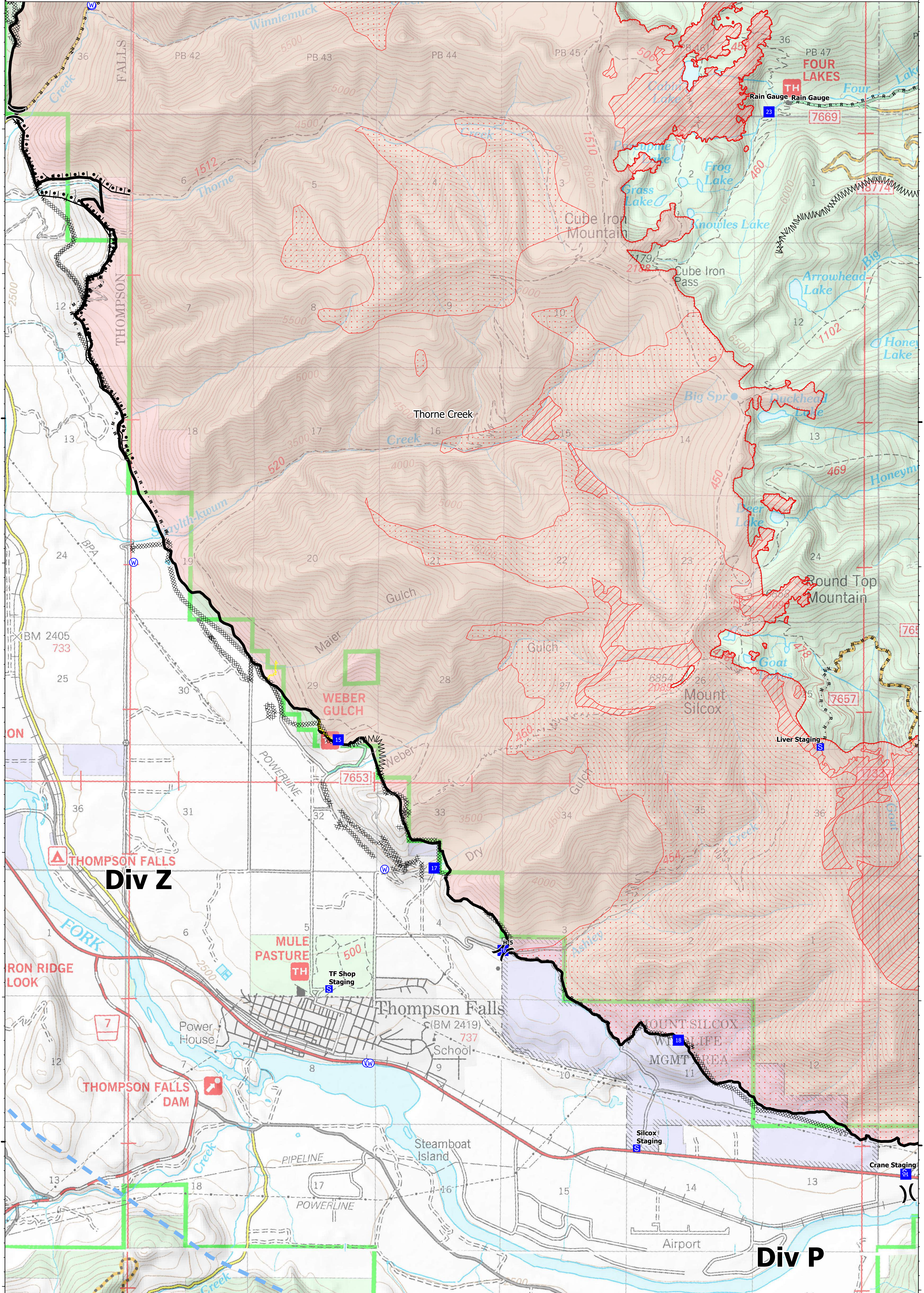
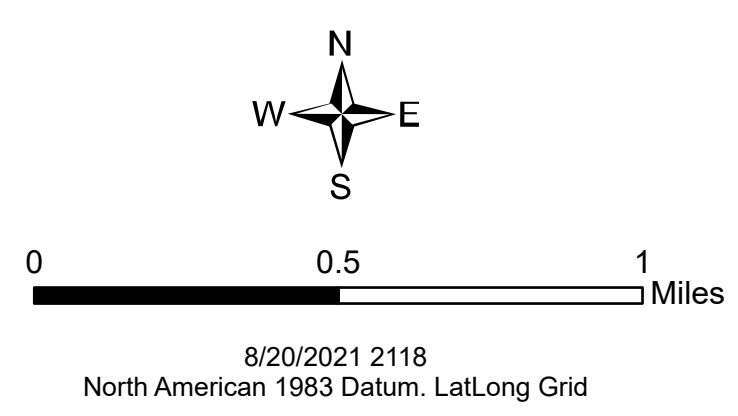




Ops Map
 West Lolo Complex - Div Z
 MT-LNF-000893
 8/21/2021
 38688 acres at 8/17/21 @ 1600

- Check Point
- Helispot
- ⌋ Division Break
- Drop Point
- Staging Area
- Other
- Gate
- Water Source
- ⌋ Completed Burnout
- ⌋ Completed Dozer Line
- ⌋ Completed Fuel Break
- ⌋ Completed Hand Line
- M - Completed Mixed Construction Line
- R - Completed Road as Line
- Access or Improved Road
- ⌋ Incident Action Point
- ⌋ Temporary Flight Restriction
- Fire Edge
- Contained Line
- IR Intense Heat
- IR Scattered Heat
- Wildfire Daily Fire Perimeter
- Fire History

Type	Label	Latitude	Longitude
Water Development or Draft Site		47° 42.855' N	115° 22.925' W
Water Source		47° 35.550' N	115° 20.054' W
Water Source		47° 39.895' N	115° 22.471' W
Water Source		47° 36.895' N	115° 19.888' W
Water Source		47° 43.240' N	115° 22.667' W
Water Source		47° 42.840' N	115° 22.930' W
Check Point		47° 43.061' N	115° 23.554' W
Water Source		47° 35.554' N	115° 20.029' W
Drop Point		47° 37.780' N	115° 20.369' W
Drop Point		47° 36.338' N	115° 18.675' W
Drop Point		47° 36.965' N	115° 19.383' W
Drop Point		47° 35.572' N	115° 16.870' W
Drop Point		47° 34.801' N	115° 14.549' W
Drop Point		47° 42.141' N	115° 15.584' W
Drop Point		47° 42.240' N	115° 22.627' W
Helispot	H-5	47° 36.338' N	115° 18.675' W



47°40'N

47°40'N

47°35'N

47°35'N

115°20'W

115°15'W