

115°10'W

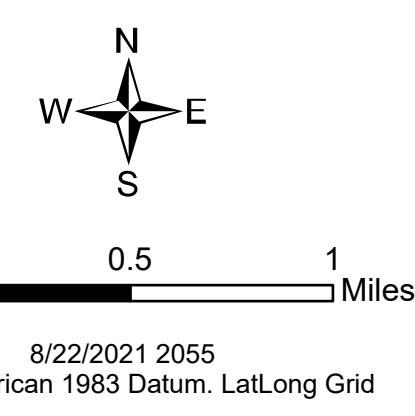
115°5'W



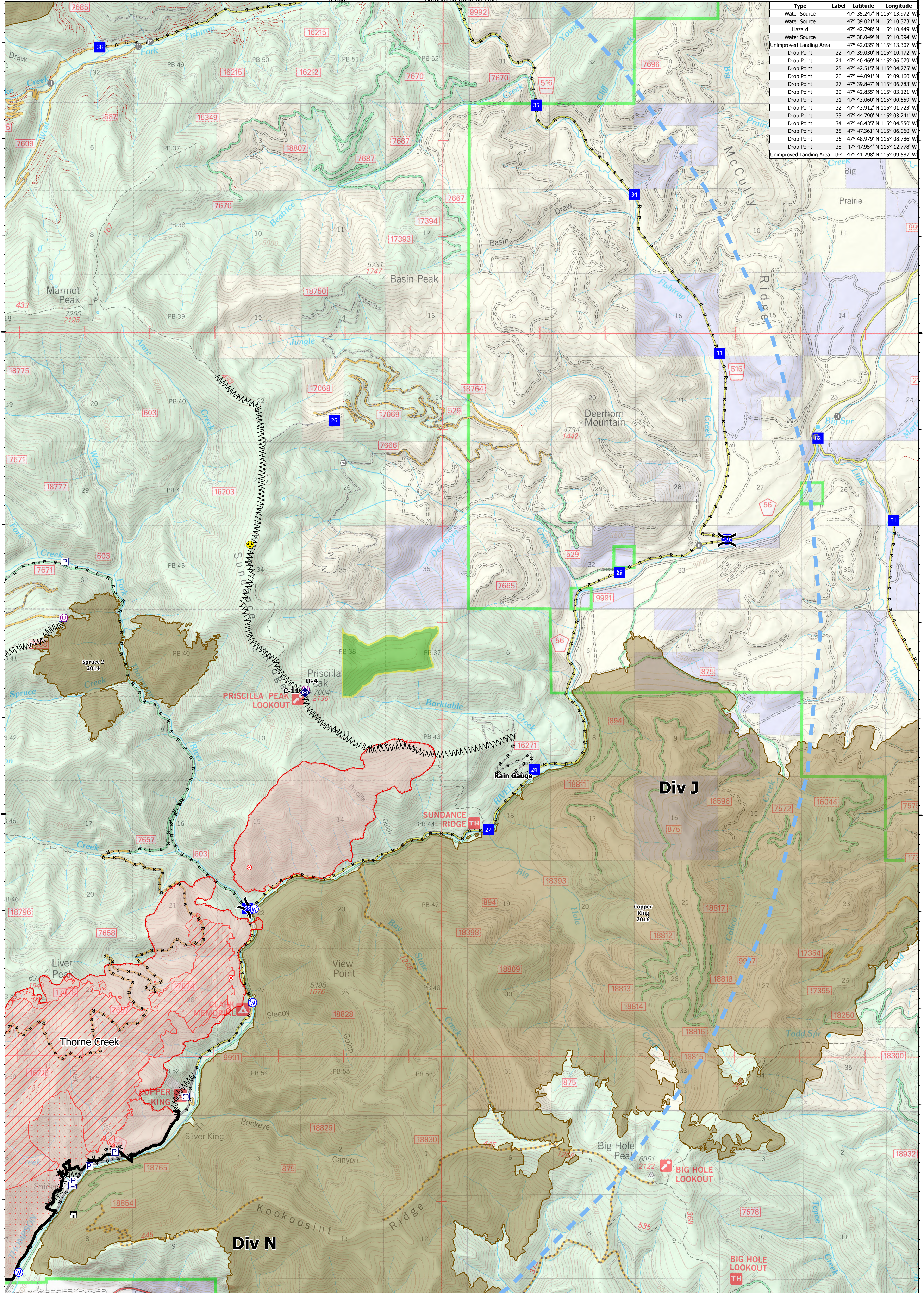
Ops Map

West Lolo Complex - Div J
 MT-LNF-000893
 8/23/2021
 38688 acres at 8/17/21 @ 1600

- Unimproved Landing Area
- ✕ Division Break
- Drop Point
- Closure
- ▣ Lookout
- Hot Spot - Spot Fire
- Other
- Gate
- Bridge
- ◆ Repeater
- ◆ Hazard
- Water Source
- Pump
- Water Tank
- ✕ Completed Dozer Line
- ⊔ Completed Fuel Break
- ⊔ Completed Hand Line
- ⊔ Completed Road as Line
- Access or Improved Road
- Temporary Flight Restriction
- Fire Edge
- Contained Line
- IR Intense Heat
- IR Scattered Heat
- Wildfire Daily Fire Perimeter
- Fire History



Type	Label	Latitude	Longitude
Water Source		47° 35.247' N 115° 13.972' W	
Water Source		47° 39.021' N 115° 10.373' W	
Hazard		47° 42.798' N 115° 10.449' W	
Water Source		47° 38.049' N 115° 10.394' W	
Unimproved Landing Area		47° 42.035' N 115° 13.307' W	
Drop Point	22	47° 39.030' N 115° 10.472' W	
Drop Point	24	47° 40.469' N 115° 06.079' W	
Drop Point	25	47° 42.515' N 115° 04.775' W	
Drop Point	26	47° 44.091' N 115° 09.160' W	
Drop Point	27	47° 39.847' N 115° 06.783' W	
Drop Point	29	47° 42.855' N 115° 03.121' W	
Drop Point	31	47° 43.060' N 115° 00.559' W	
Drop Point	32	47° 43.912' N 115° 01.723' W	
Drop Point	33	47° 44.790' N 115° 03.241' W	
Drop Point	34	47° 46.435' N 115° 04.550' W	
Drop Point	35	47° 47.361' N 115° 06.060' W	
Drop Point	36	47° 48.979' N 115° 08.786' W	
Drop Point	38	47° 47.954' N 115° 12.778' W	
Unimproved Landing Area	U-4	47° 41.298' N 115° 09.587' W	



47°45'N

47°45'N

47°40'N

47°40'N

115°10'W

115°5'W