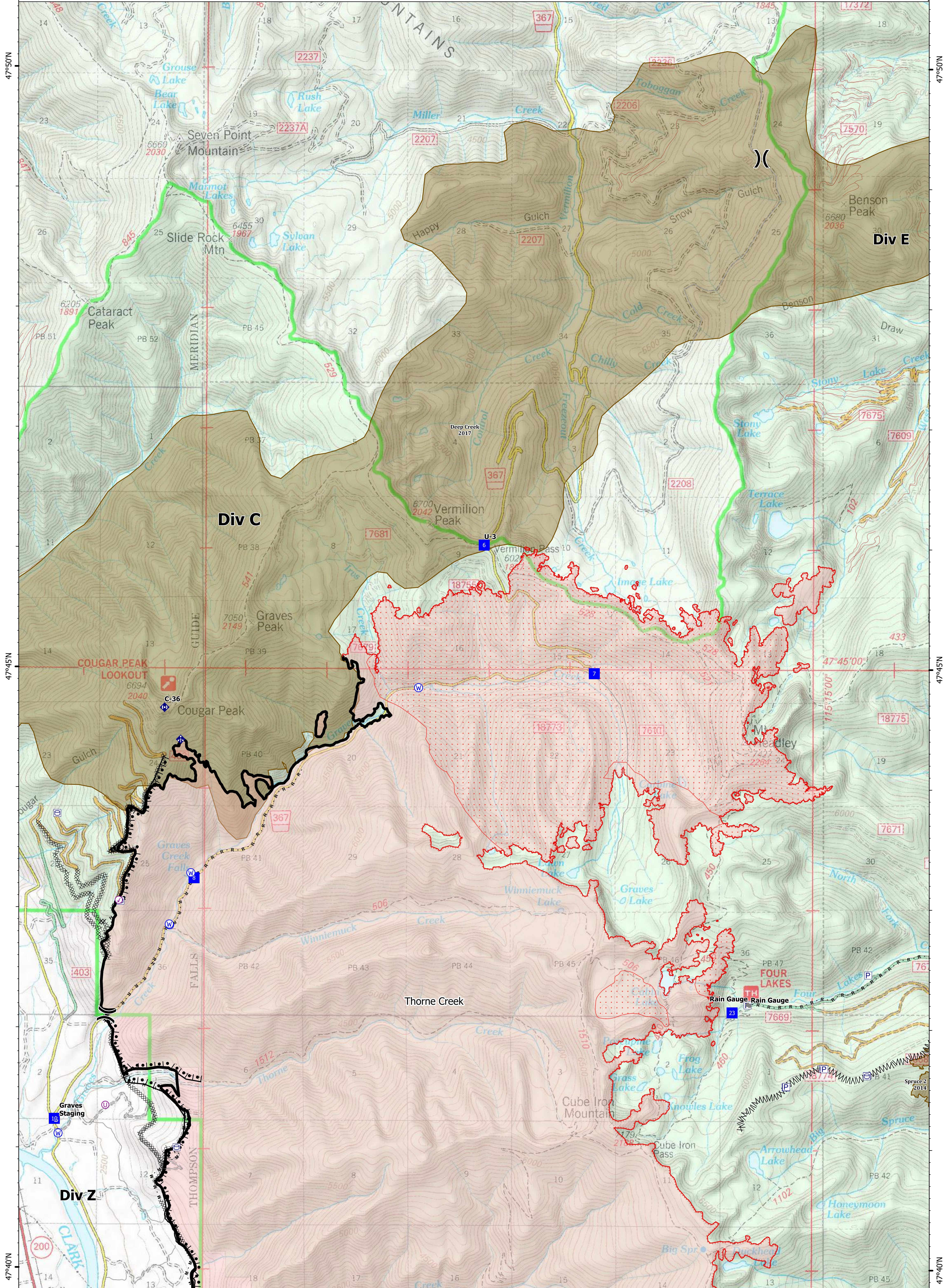
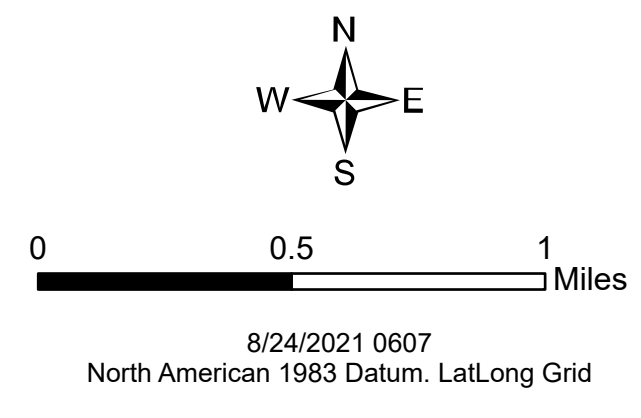




Ops Map
 West Lolo Complex - Div C
 MT-LNF-000893
 8/24/2021 Day
 38688 acres at 8/17/21 @ 1600

- Check Point
- Unimproved Landing Area
- ⌘ Division Break
- Drop Point
- Staging Area
- Other
- Bridge
- ◆ Mobile Weather Unit
- ◆ Repeater
- Water Source
- Pump
- Water Tank
- ⊗ Completed Burnout
- ⊗ Completed Dozer Line
- ⊗ Completed Fuel Break
- ⊗ Completed Hand Line
- ⊗ Completed Mixed Construction Line
- ⊗ Completed Road as Line
- ⊗ Access or Improved Road
- Fire Edge
- Contained Line
- IR Scattered Heat
- Wildfire Daily Fire Perimeter
- Fire History

Type	Label	Latitude	Longitude
Water Source		47° 41.117' N 115° 24.288' W	
Water Development or Draft Site		47° 42.859' N 115° 22.925' W	
Water Source		47° 44.839' N 115° 19.867' W	
Water Source		47° 42.855' N 115° 22.925' W	
Unimproved Landing Area		47° 41.354' N 115° 23.708' W	
Water Source		47° 43.290' N 115° 22.667' W	
Check Point		47° 42.862' N 115° 22.930' W	
Check Point		47° 43.061' N 115° 23.554' W	
Drop Point	10	47° 41.239' N 115° 24.335' W	
Drop Point	23	47° 42.141' N 115° 15.984' W	
Drop Point	6	47° 46.028' N 115° 19.064' W	
Drop Point	7	47° 44.961' N 115° 17.699' W	
Drop Point	8	47° 43.248' N 115° 22.627' W	
Unimproved Landing Area	U-3	47° 46.029' N 115° 19.064' W	



47°50'N

47°50'N

47°45'N

47°45'N

47°40'N

47°40'N

115°20'W

115°15'W