

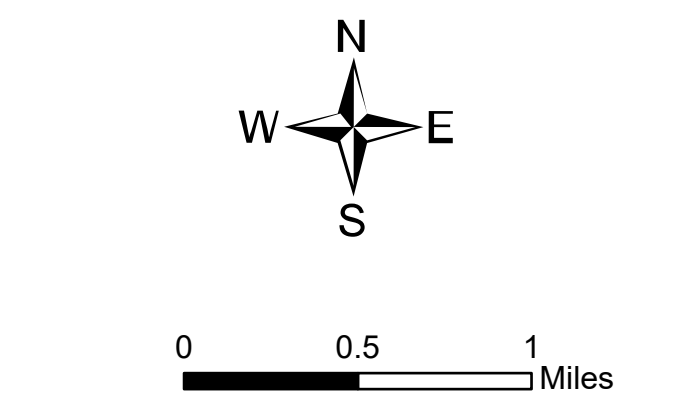
Ops Map

West Lolo Complex - Div E
 MT-LNF-000893
 8/24/2021
 38688 acres at 8/17/21 @ 1600

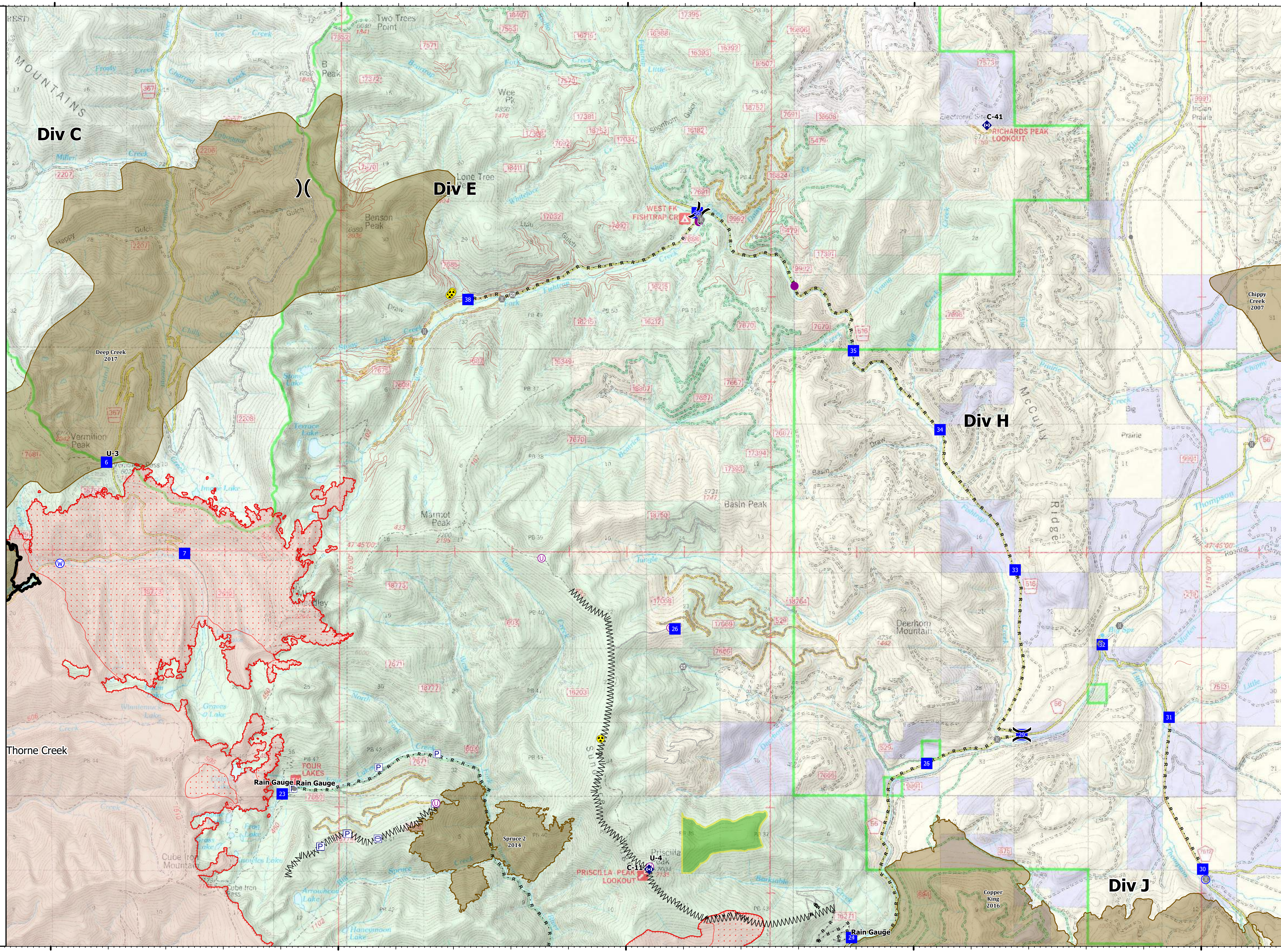


- Check Point
- Helispot
- Unimproved Landing Area
- Division Break
- Drop Point
- Closure
- Other
- Gate
- Bridge
- Mobile Weather Unit
- Repeater
- Hazard
- Water Source
- Pump
- Water Tank
- Completed Burnout
- Completed Dozer Line
- Completed Fuel Break
- Completed Hand Line
- Completed Mixed Construction Line
- Completed Plow Line
- Completed Road as Line
- Access or Improved Road
- Fire Edge
- Contained Line
- IR Scattered Heat
- Wildfire Daily Fire Perimeter
- Fire History

| Type | Label | Latitude | Longitude |
|---------------------------------|-------|------------------------------|-----------|
| Water Development or Draft Site | | 47° 42.859' N 115° 22.925' W | |
| Water Source | | 47° 44.859' N 115° 19.857' W | |
| Water Source | | 47° 42.859' N 115° 22.925' W | |
| Unimproved Landing Area | | 47° 44.104' N 115° 09.238' W | |
| Hazard | | 47° 42.798' N 115° 10.449' W | |
| Water Source | | 47° 46.320' N 115° 22.607' W | |
| Water Source | | 47° 42.862' N 115° 22.930' W | |
| Unimproved Landing Area | | 47° 44.916' N 115° 11.484' W | |
| Unimproved Landing Area | | 47° 42.035' N 115° 13.307' W | |
| Water Source | | 47° 41.155' N 114° 59.923' W | |
| Helispot | | 47° 48.869' N 115° 08.798' W | |
| Helispot | | 47° 48.120' N 115° 07.988' W | |
| Hazard | | | |
| Hazard | | | |
| Drop Point | 23 | 47° 42.141' N 115° 15.984' W | |
| Drop Point | 24 | 47° 40.469' N 115° 06.979' W | |
| Drop Point | 25 | 47° 42.515' N 115° 04.751' W | |
| Drop Point | 26 | 47° 44.091' N 115° 09.160' W | |
| Drop Point | 29 | 47° 42.859' N 115° 03.121' W | |
| Drop Point | 30 | 47° 42.226' N 114° 59.975' W | |
| Drop Point | 31 | 47° 43.000' N 115° 00.559' W | |
| Drop Point | 32 | 47° 43.912' N 115° 01.723' W | |
| Drop Point | 33 | 47° 44.790' N 115° 03.241' W | |
| Drop Point | 34 | 47° 46.450' N 115° 04.507' W | |
| Drop Point | 35 | 47° 47.361' N 115° 06.060' W | |
| Drop Point | 36 | 47° 48.979' N 115° 08.790' W | |
| Drop Point | 38 | 47° 47.950' N 115° 12.778' W | |
| Drop Point | 6 | 47° 46.028' N 115° 19.064' W | |
| Drop Point | 7 | 47° 44.961' N 115° 17.699' W | |
| Drop Point | 8 | 47° 43.248' N 115° 22.607' W | |
| Unimproved Landing Area | U-3 | 47° 46.029' N 115° 19.064' W | |
| Unimproved Landing Area | U-4 | 47° 41.298' N 115° 09.587' W | |



8/24/2021 0607
 North American 1983 Datum, Lat/Long Grid



115°20'W 115°15'W 115°10'W 115°5'W 115°W